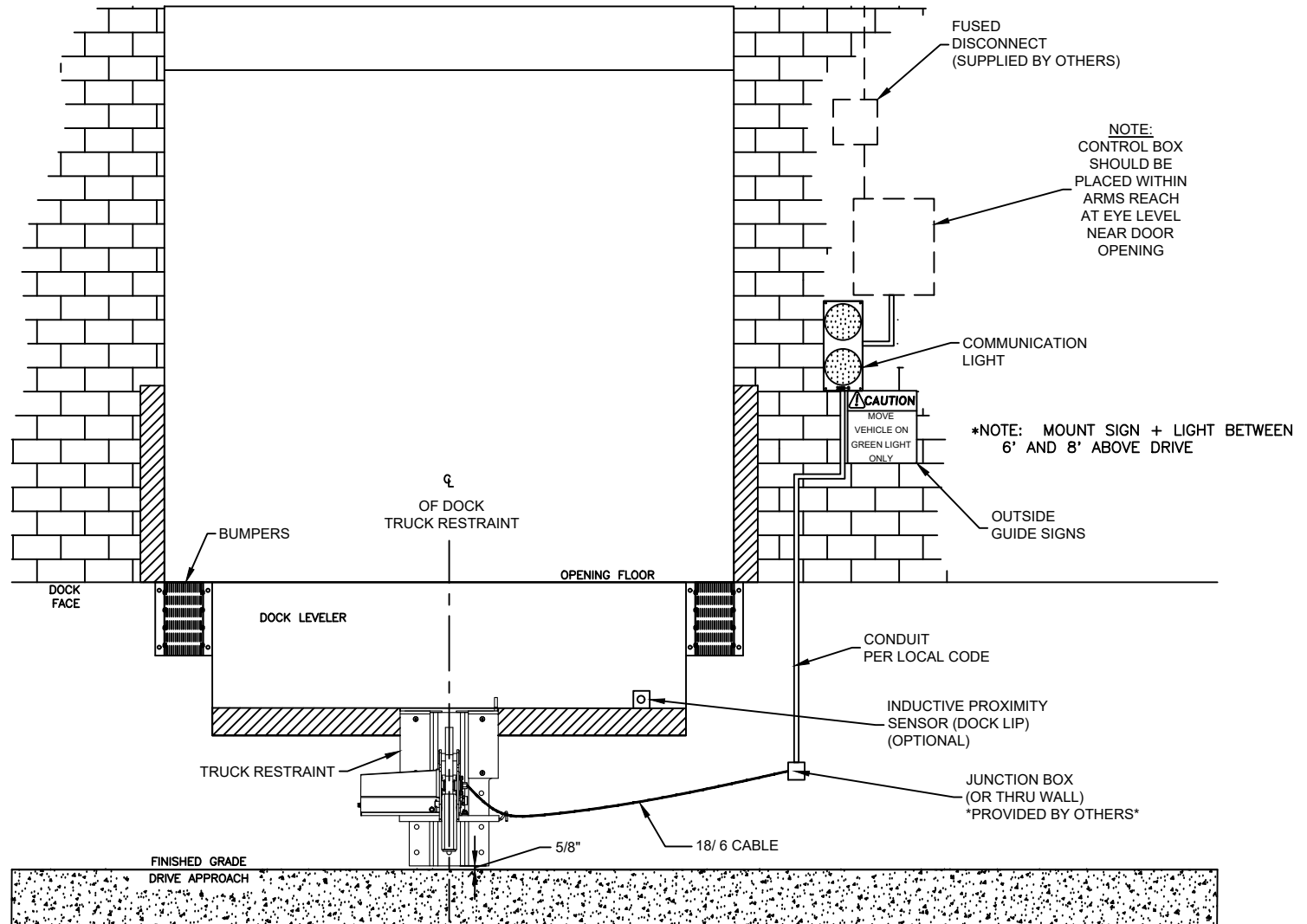


SPECIFICATIONS

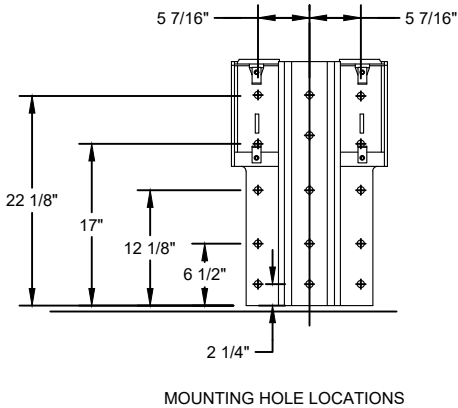
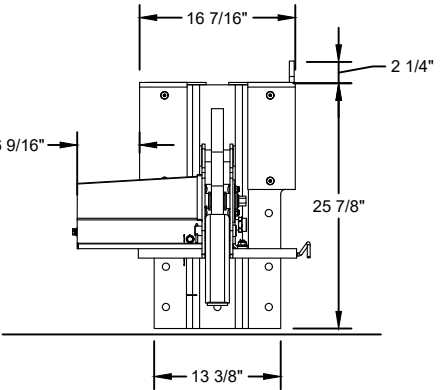
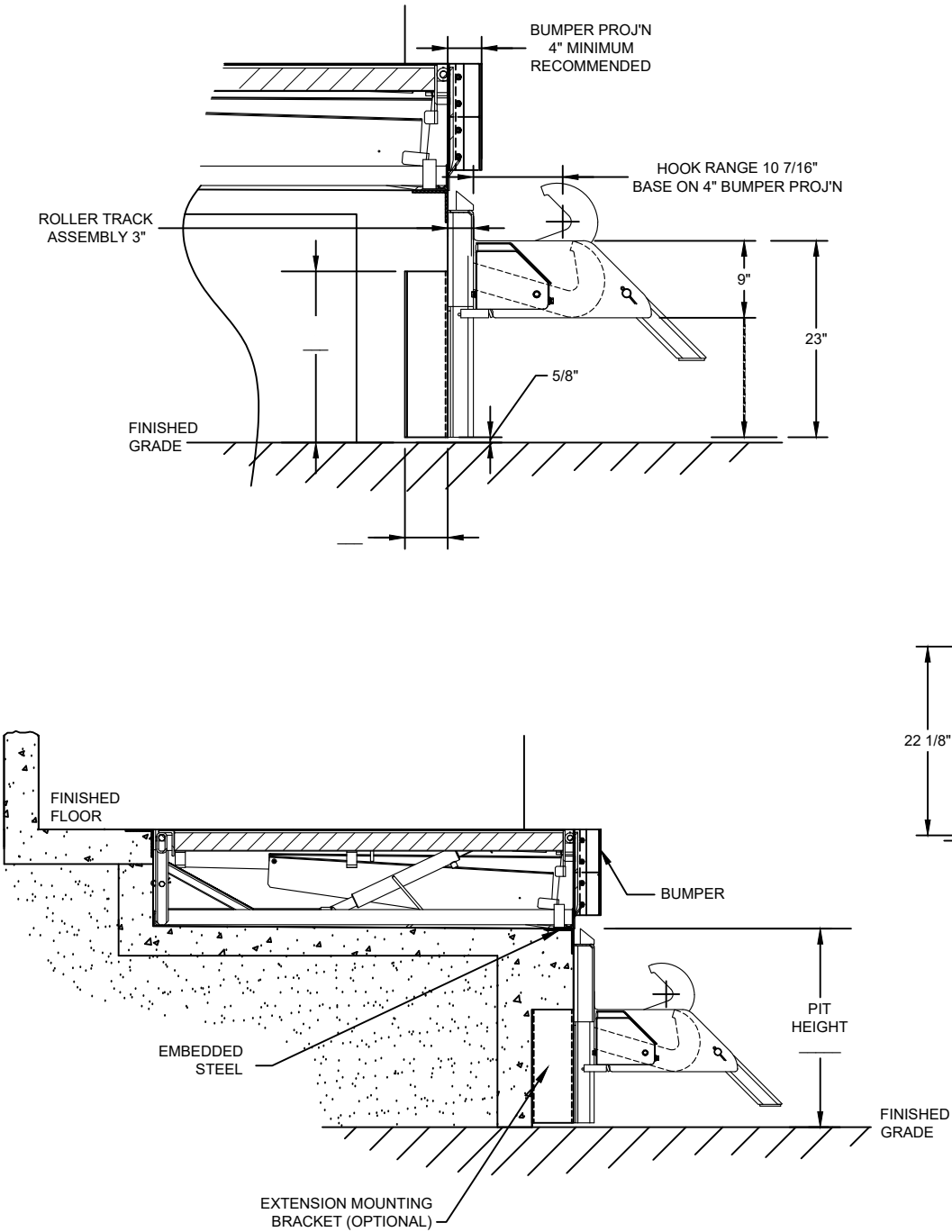
DOCK NUMBER  
QUANTITY

NOTES



RTPI10R		
PROJECT		
ARCHITECT		
CONTRACTOR		
DISTRIBUTOR		
PLANT		
DIST. DWG. NO.	DATE:	The Genuine. The Original. <b>OVERHEAD DOOR</b>
SHEET	BY:	

SPECIFICATIONS	
DOCK NUMBER	
QUANTITY	
VOLTAGE & PHASE	
115V AC 1-PHASE (STANDARD)	
208 - 220V AC 1-PHASE	
230 - 240V AC 1-PHASE	
208 - 220V AC 3-PHASE	
230 - 240V AC 3-PHASE	
460 - 480V AC 3-PHASE	
575 - 600V AC 3-PHASE	
COMBO PANEL (OPTION)	
DOCK SINGLE BUTTON (DECK LIP)	
MASTER CONTROL PANEL (OPTIONS)	
OVERHEAD DOOR (OPEN / CLOSE / STOP)	
DOCK LIGHT (ON / OFF)	
DISCONNECT (LOCKABLE + FUSED)	
INTERLOCK	
INDUCTIVE PROXIMITY SENSOR (LIP)	
PHOTO EYE PROXIMITY SENSOR (DOOR)	
EXTENSION MOUNTING BRACKET (OPTION)	
HEIGHT (3" - 26" BY .5" INCREMENT):	
PROJECTION (2" - 16" BY .5" INCREMENT):	
MOUNTING PLATES (OPTIONS)	
RESTRAINT PIT FLOOR PLATE	
BRICK BRACKET FOR BRICK / BLOCK WALL	
ROLLER TRACK CUT DOWN (OPTIONS)	
NONE (STANDARD)	
1"	
2"	
3"	
NOTES	
POWER TO MATCH DOCK LEVELER MOTOR, RESTRAINT WILL REMAIN 115V AC	



RTP10R		
PROJECT		
ARCHITECT		
CONTRACTOR		
DISTRIBUTOR		
PLANT		
DIST. DWG. NO.	DATE:	The Genuine. The Original. 
SHEET	BY:	