

SECTIONAL WAREHOUSE DOORS



PRODUCT LINE

NON-INSULATED DOORS

INSULATED DOORS

MODELS

401/403/405

402/404/406



INDUSTRY LEADING
COMMERCIAL & INDUSTRIAL SOLUTIONS



Standard Features at a Glance

CONSTRUCTION

Sectional Thickness	2"
Section Sizes	19", 21", 24"
Exterior Surface	Ribbed
Standard Springs	10,000 cycle
Exterior Color	White
Joint Profile	Tongue-and-groove

THERMAL EFFICIENCY

R-Value*	7.64 (Model 402, 404, 406)
----------	----------------------------

WARRANTY

1 Year Limited

Options

- Chain hoist operation
- Motor operation
- High cycle spring (25K, 50K, 100K)
- 3" track option
- Solid shafts
- Perimeter weatherseal
- Broken cable devices
- Safety edges
- Safety photo eyes
- Special track designs
- Simple Install System

* R-Value is a measure of thermal efficiency. The higher the R-Value the greater the insulating properties of the door. Overhead Door Corporation uses a calculated door curtain R-Value and U-Value for our insulated doors.

Cover image: Model 402, White Smooth finish, Vision Lites

Image above: Model 405, White Smooth finish, Vision Lites



Our Sectional Warehouse Doors provide a highly efficient design for strength and longevity for use in demanding commercial settings. They feature full 2" thickness for ultimate strength and durability. Optional insulation consists of 1 5/16" expanded polystyrene throughout the door. Both steel and poly laminate backer choices are available to ensure these models are well-suited for a wide range of applications.

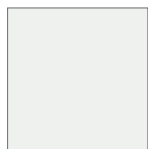


Model 401, White Smooth finish, Full-view Lites

Model Comparison

MODEL	401	402	403	404	405	406
Exterior Steel Gauge	20 Gauge	20 Gauge	24 Gauge	24 Gauge	Nom. 24 Gauge	Nom. 24 Gauge
Section Thickness	2"	2"	2"	2"	2"	2"
Joint Profile	Tongue & Groove	Tongue & Groove	Tongue & Groove	Tongue & Groove	Tongue & Groove	Tongue & Groove
Insulation	N/A	Expanded Polystyrene	N/A	Expanded Polystyrene	N/A	Expanded Polystyrene
Interior Backer Options	N/A	Vinyl or Steel	N/A	Vinyl or Steel	N/A	Vinyl or Steel
Max. Width	30'2"	30'2"	30'2"	30'2"	20'2"	20'2"
Max. Height	22'1"	22'1"	22'1"	22'1"	16'1"	16'1"
Section Sizes	19", 21", 24"	19", 21", 24"	19", 21", 24"	19", 21", 24"	19", 21", 24"	19", 21", 24"
R-Value	N/A	7.64	N/A	7.64	N/A	7.64
Exterior Surface	Ribbed	Ribbed	Ribbed	Ribbed	Ribbed	Ribbed
Std Springs - Cycle	10,000	10,000	10,000	10,000	10,000	10,000
Warranty	1-Year Limited	1-Year Limited	1-Year Limited	1-Year Limited	1-Year Limited	1-Year Limited

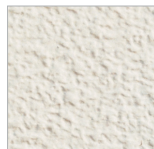
Finish Options



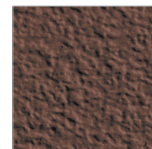
White Smooth



Brown Smooth
Models 403/404/405/406



White Stucco-Embossed
Models 405/406



Brown Stucco-Embossed
Models 405/406

Actual color may vary due to fluctuations in the printing process.

Lite Options



Vision Lites



Full-view Lites



Model 401, Brown Smooth finish, Vision Lites



Architect's Corner

A resource for architects, containing comprehensive technical and resource materials to support your project, including drawings and specifications for commercial doors.

www.overhaddoor.com

The original, innovative choice for unequalled quality and service.

Overhead Door Corporation pioneered the upward-acting door industry, inventing the first sectional garage door in 1921 and the first electric door operator in 1926. Today, we continue to be the industry leader through the strength of our product innovation, superior craftsmanship and outstanding customer support, underscoring a legacy of quality, expertise and integrity. That's why design and construction professionals specify Overhead Door™ products more often than any other brand. Our family of over 400 Overhead Door™ Distributors across the U.S. and Canada not only share our name and logo, but also our commitment to excellence.



INDUSTRY LEADING
COMMERCIAL & INDUSTRIAL SOLUTIONS

2501 S. State Hwy. 121 Bus., Suite 200, Lewisville, TX 75067
1-800-929-DOOR • sales@overhaddoor.com
overhaddoor.com

