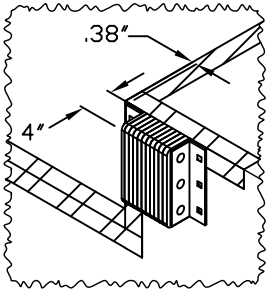
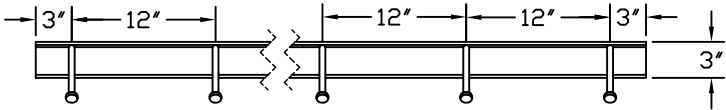
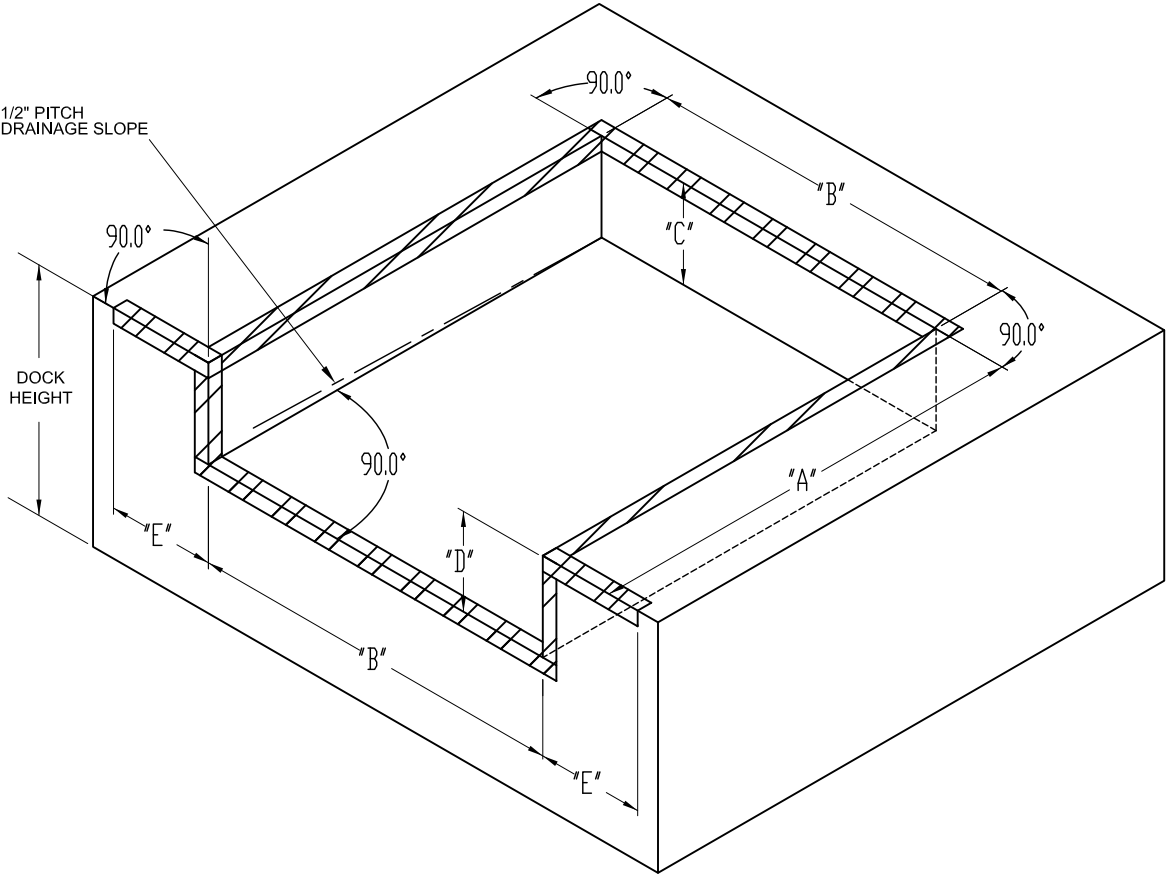


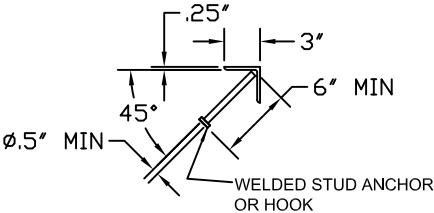
SPECIFICATIONS	
DOCK NUMBER	
DOOR WIDTH	
DOOR HEIGHT	
NOTES	



BUMPER INSTALL LOCATION  
(BOTH SIDES)



EMBEDDED ANGLE (BY OTHER)



PIT DIMENSIONS				
DIMENSION DESCRIPTION	DIMENSION NAME	TOLERANCE	NOMINAL LEVELER SIZE	
			6"X8"	7"X8"
PIT LENGTH	"A"	-1/4" +0"	87"	87"
PIT WIDTH	"B"	±1/8"	74"	85"
PIT DEPTH (REAR)	"C"	±1/8"	19.5"	19.5"
PIT DEPTH (FRONT)	"D"	±1/8"	20"	20"
BUMPER CURB ANGLE LENGTH	"E"	±1/2"	18" MIN	18" MIN

PIT DRAWING		
PROJECT		
ARCHITECT		
CONTRACTOR		
DISTRIBUTOR		
PLANT		
DIST. DWG. NO.	DATE:	The Genuine. The Original. 
SHEET 1 OF 2	BY:	

SPECIFICATIONS

DOCK NUMBER

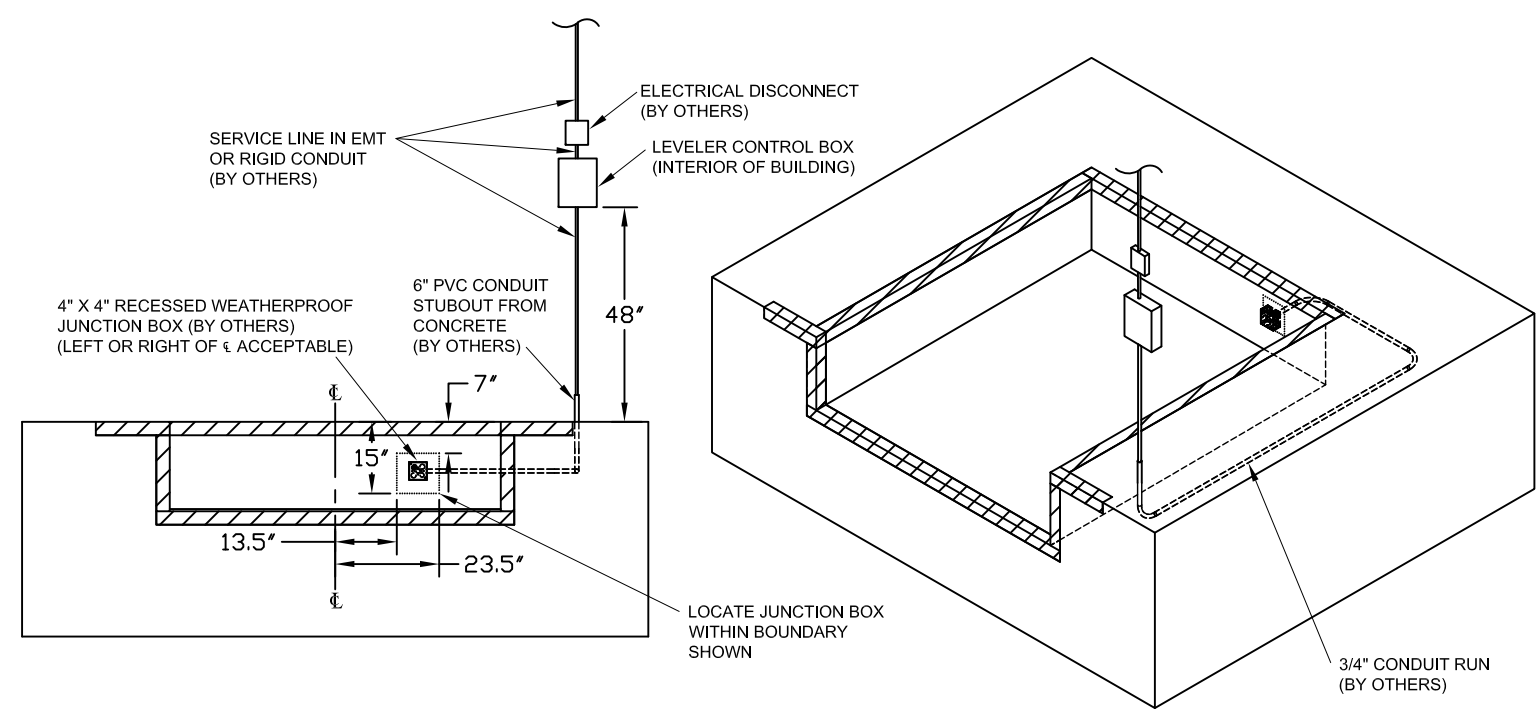
DOOR WIDTH

DOOR HEIGHT

NOTES

PRIOR TO CONCRETE POUR, POSITION CONDUIT AND JUNCTION BOX (BY OTHERS) AT INDICATED LOCATIONS.

TYPE/SIZE/GAUGE/POSITION OF CONDUIT, JUNCTION BOX, ELECTRICAL DISCONNECT AND WIRE (BY OTHERS) MAY VARY WITH LOCAL CODES.



ELECTRICAL WIRING DETAIL				
CONTROL	VOLTAGE AND PHASE	SERVICE FEEDER		TOTAL QUANTITY OF WIRES
		WIRE GAUGE	OVERCURRENT DEVICE	
HYDRAULIC LEVELER STANDARD CONTROL BOX	115 VOLT / 1 PHASE	12AWG MIN	20A MAX	3
	208-230 VOLT / 1 PHASE	12AWG MIN	20A MAX	3
	208-230 VOLT / 3 PHASE	14AWG MIN	15A MAX	4
	460 VOLT / 3 PHASE	14AWG MIN	15A MAX	4

PIT DRAWING - ELECTRICAL DETAIL

PROJECT

ARCHITECT

CONTRACTOR

DISTRIBUTOR

PLANT

DIST. DWG. NO.

DATE:

BY:

SHEET

2 OF 2

The Genuine. The Original.

OVERHEAD DOOR