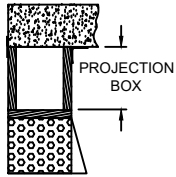


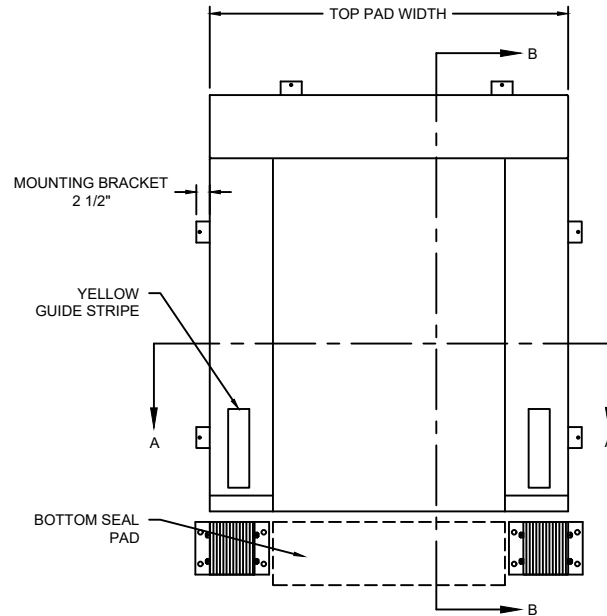
WEAR PLEATS DETAIL



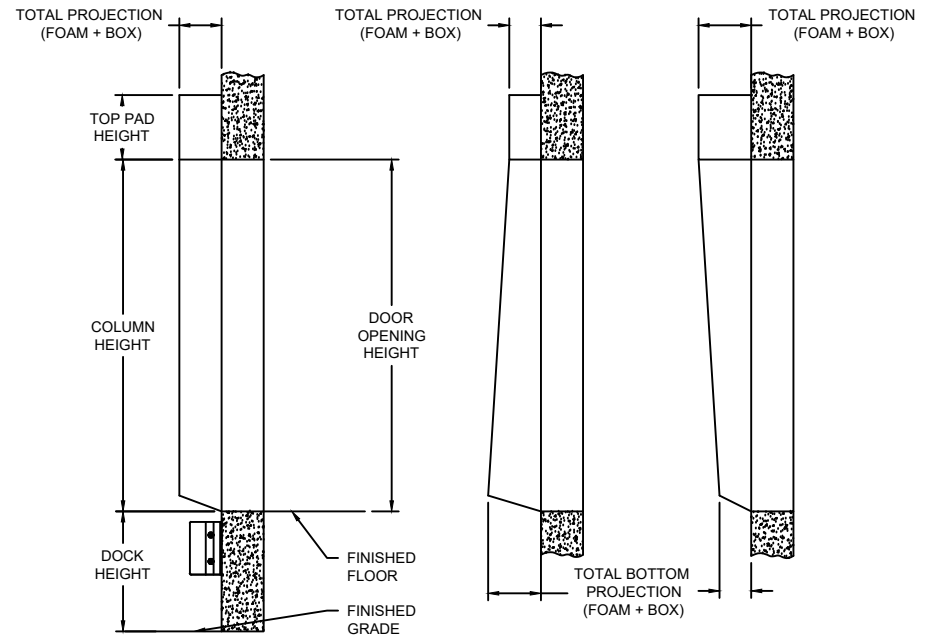
PROJECTION BOX DETAIL

OPTIONS

DOOR OPENING WIDTH	
DOOR OPENING HEIGHT	
COLUMN WIDTH	
COLUMN HEIGHT	
TOP PAD WIDTH	
TOP PAD HEIGHT	
PROJECTION OPTIONS	<input type="checkbox"/> 10" <input type="checkbox"/> OTHER (8" - 20") <input type="checkbox"/> PROJECTION BOX <input type="checkbox"/> TAPER PROJECTION
FRAME OPTIONS	<input type="checkbox"/> TREATED LUMBER <input type="checkbox"/> GALVANIZED STEEL



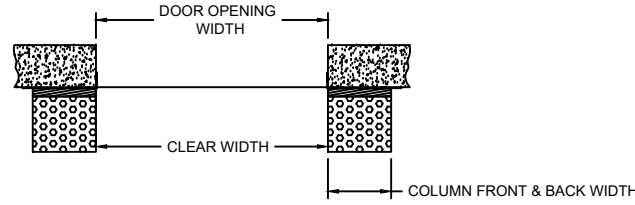
ELEVATION



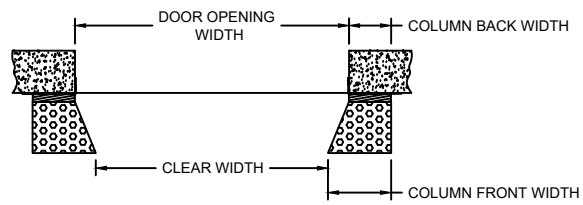
SECTION B-B

SECTION B-B TAPERED UP

SECTION B-B TAPERED DOWN



SECTION A-A CUBE COLUMN



SECTION A-A WEDGE COLUMN

BACK COLUMN WIDTH	FRONT COLUMN WIDTH
10"	10"
12"	12"
8"	11"
8"	14"
12"	15"
12"	18"

FIXED DOCK SEAL

MODEL LX10R

NOTES:
 1. MADE OF FIRE RESISTANT FOAM IS CONTINUOUSLY BONDED TO THE BACKING WITH A NON-FLAMMABLE ADHESIVE WITH ELASTIC PROPERTIES FOR LONG LIFE

DWG. NO.	DATE:	The Genuine. The Original.
SHEET	BY:	