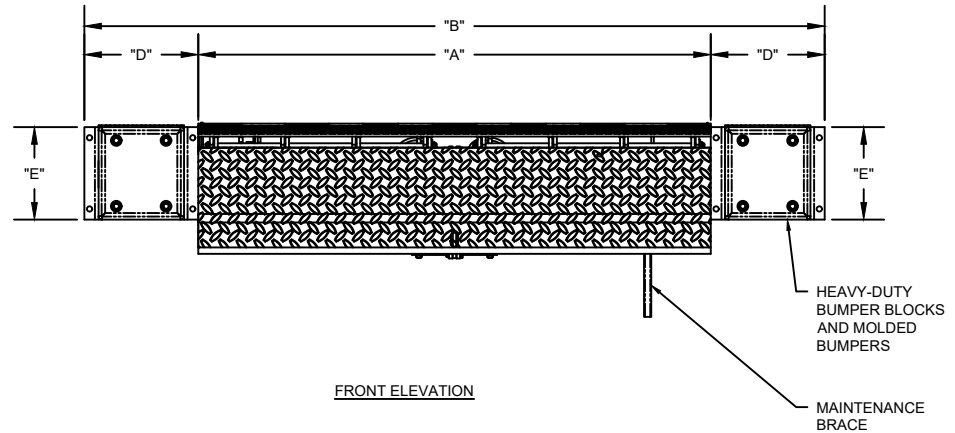
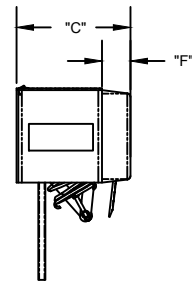


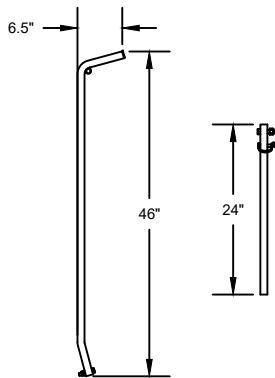
TOP VIEW



FRONT ELEVATION



SIDE VIEW



OPERATING HANDLE AND MAINTENANCE BRACE

EDGE OF DOCK LEVELER DIMENSIONS

MODEL	DECK WIDTH "A" (INCH)	OVERALL WIDTH "B" (INCH)	BUMPER ASSEMBLY PROJECTION "C" (INCH)		BOX WIDTH "D" (INCH)	BOX HEIGHT "E" (INCH)	BUMPER THICKNESS "F" (INCH)
			"C" (INCH)				
			15" LIP	17" LIP			
E66R	66	98	16	17	16	13	4
E72R	72	104	16	17	16	13	4

OPTIONS

DOOR WIDTH

DOOR HEIGHT

SIZE OPTIONS

66" (E66R)

72" (E72R)

NOTES:

1. TEXTURED POWDER COATED DIAMOND PLATED SURFACE PROVIDES ENHANCED TRACTION AND INCREASE NON-SLIP PROTECTION.
2. COMPLIANT WITH ANSI MH30.1-2022 WHICH INCLUDES RIGOROUS LOAD TESTING REQUIREMENTS
3. WEIGHT CAPACITY: 20,000 - 30,000 LBS.

EDGE OF DOCK LEVELER

MODELS E66R & E72R

DWG. NO.	DATE:	
SHEET	BY:	