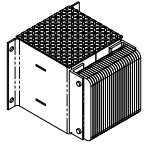
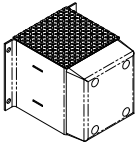


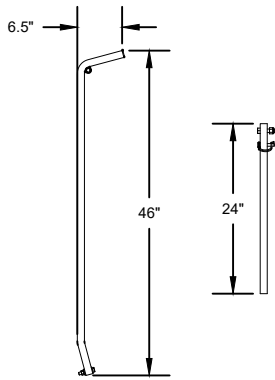
BUMPER  
STEEL FACED



BUMPER  
LAMINATED RUBBER



BUMPER  
MOLDED RUBBER (STANDARD)



OPERATING HANDLE AND  
MAINTENANCE BRACE

**OPTIONS**

DOOR WIDTH

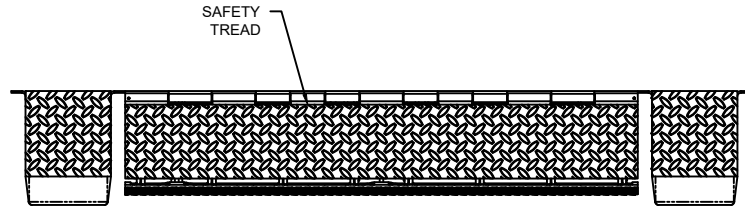
DOOR HEIGHT

SIZE OPTIONS  
 66" (E66R)  
 72" (E72R)

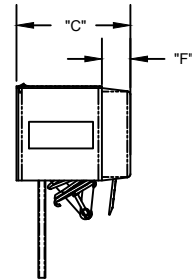
BUMPER  
OPTIONS  
 MOLDED RUBBER  
 LAMINATED RUBBER  
 STEEL FACED

**NOTES:**

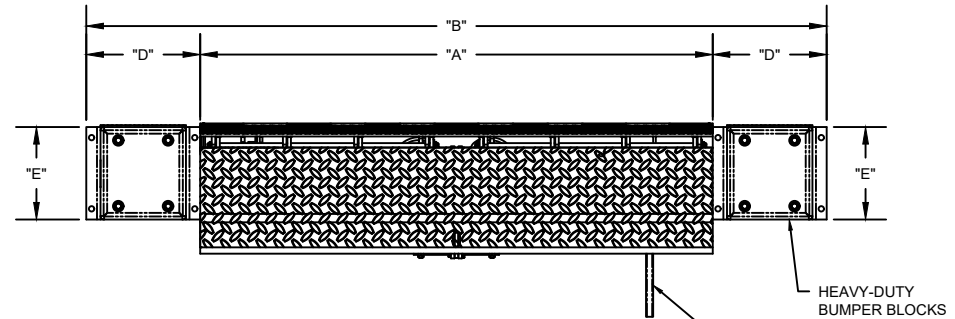
1. TEXTURED POWDER COATED DIAMOND PLATED SURFACE PROVIDES ENHANCED TRACTION AND INCREASE NON-SLIP PROTECTION.
2. COMPLIANT WITH ANSI MH30.1-2022 WHICH INCLUDES RIGOROUS LOAD TESTING REQUIREMENTS
3. WEIGHT CAPACITY: 20,000 - 30,000 LBS.



TOP VIEW



SIDE VIEW



FRONT ELEVATION

HEAVY-DUTY  
BUMPER BLOCKS  
AND MOLDED  
BUMPERS

MAINTENANCE  
BRACE

EDGE OF DOCK LEVELER DIMENSIONS

MODEL	DECK WIDTH (INCH)	OVERALL WIDTH (INCH)	BUMPER ASSEMBLY PROJECTION		BOX WIDTH (INCH)	BOX HEIGHT (INCH)	BUMPER THICKNESS (INCH)
			"C" (INCH)				
			15" LIP	17" LIP			
E66R	66	98	16	17	16	13	4
E72R	72	104	16	17	16	13	4

# EDGE OF DOCK LEVELER

MODELS E66R & E72R

DWG. NO.	DATE: 08/10/2025	The Genuine. The Original. <b>OVERHEAD DOOR</b>
SHEET	BY:	