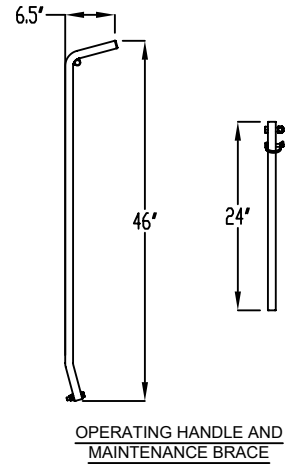
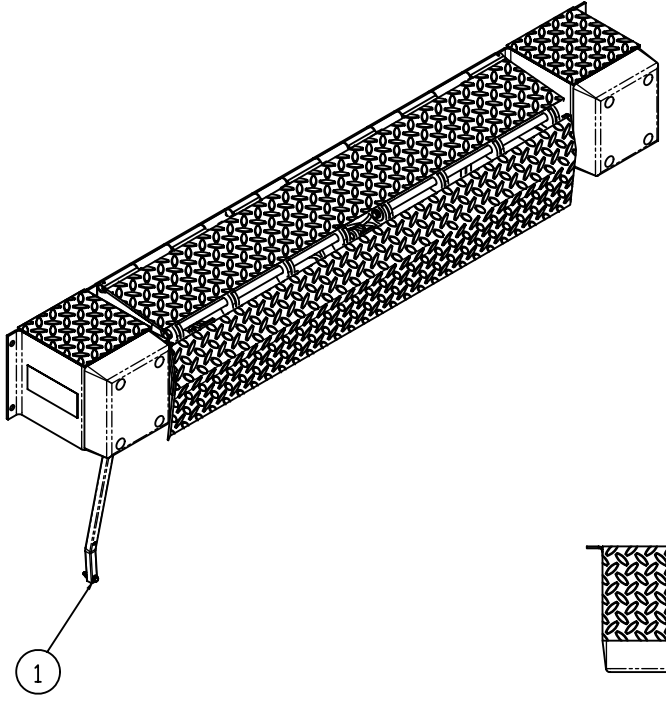


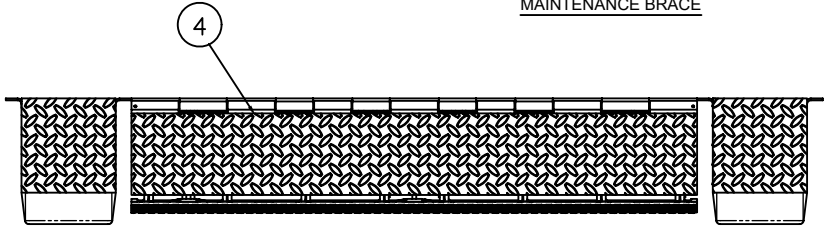
SPECIFICATIONS	
DOCK NUMBER	
DOOR WIDTH	
DOOR HEIGHT	

NOTES

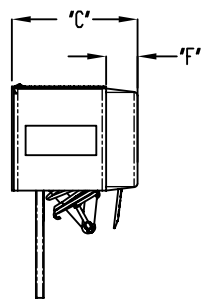
TEXTURED POWDER COATED DIAMOND PLATED SURFACE PROVIDES ENHANCED TRACTION AND INCREASE NON-SLIP PROTECTION.



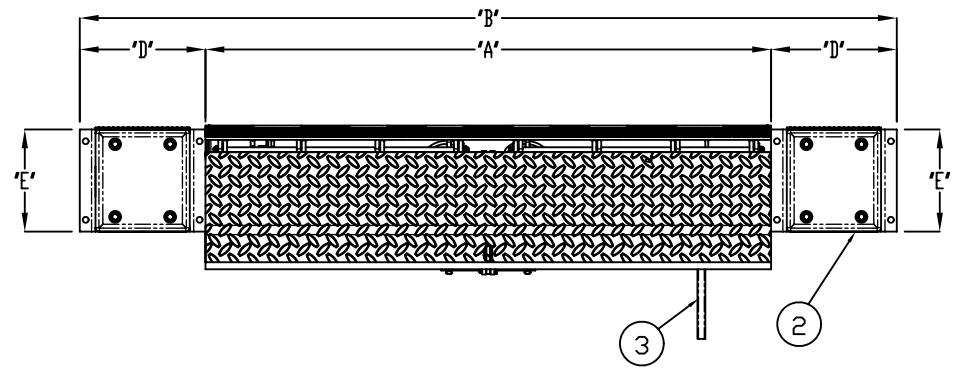
OPERATING HANDLE AND MAINTENANCE BRACE



TOP VIEW



SIDE VIEW



FRONT ELEVATION

- LEGEND:**
- 1. OPERATING HANDLE ASSEMBLY
 - 2. HEAVY-DUTY BUMPER BLOCKS AND MOLDED BUMPERS
 - 3. MAINTENANCE BRACE
 - 4. SAFETY TREAD

EOD LEVELER DIMENSIONS							
MODEL	DECK WIDTH (INCH)	OVERALL WIDTH (INCH)	BOX/ BUMPER PROJECTION 15" & 17" LIPS "C" (INCH)		BOX WIDTH (INCH)	BOX HEIGHT (INCH)	BUMPER THICKNESS (INCH)
			STANDARD CROWN	CROWN OPTION 2			
E66R	66	98	16	17	16	13	4
E72R	72	104	16	17	16	13	4

EOD LEVELER ASSEMBLY		
PROJECT		
ARCHITECT		
CONTRACTOR		
DISTRIBUTOR		
PLANT		
DIST. DWG. NO.	DATE:	The Genuine. The Original. OVERHEAD DOOR
SHEET	BY:	