

# SUPPORTING ARCHITECTS

FROM CONCEPT TO CONSTRUCTION —



The Genuine. The Original.





## Wherever You Work, We're There

Overhead Door™ tools and specs are embedded across the platforms architects rely on, so you can design, document, and specify with confidence.



Accredited continuing education & product insights



On-demand training and technical resources

**SWEETS**

Product specs, CAD files, and performance data



MasterSpec integration for streamlined documentation



Quick access to product categories and datasheets



CAD drawings, 3D models, and design-ready assets



Revit files and BIM content for seamless integration



## Architectural Services

Our Architectural Services team partners with architects throughout the entire project lifecycle. We make it easy to get the product details, technical resources, and expert guidance you need to specify with confidence.

### WHAT WE DO

We provide custom support throughout the project lifecycle, including:

**Design Assistance**

---

**Specifications Support**

---

**Drawings & CAD Files**

---

**Technical Guidance**

---

**Project Stage Tracking**

---

**Quick Response Times**

### HOW WE HELP YOU

- Fast, Design-Specific Answers
- Real-Time Collaboration
- Consistent, Nationwide Support

**ARCHITECTURALSERVICES@OVERHEADDOOR.COM**

800-929-4692, Option 6

Mon–Fri, 7:00 AM – 6:00 PM CST



## Where Design Meets Precision

Discover the tools architects need to work smarter. From detailed specs and BIM objects to CAD drawings and a custom design generator, Architect's Edge helps you create with precision, efficiency, and confidence.

### WHAT YOU WILL FIND

**Automated Drawing Generator** - Instantly create project-specific clearance drawings for rolling and sectional doors using custom dimensions and configurations. No manual drafting—just fast, accurate outputs.

**CAD & BIM File Downloads** - Access 2D (.DWG) and 3D Revit (.RFA) files for seamless integration into your design environment. Every file is spec-ready and formatted for architectural precision.

**Product Specification Library** - Explore a curated database of commercial door models with technical datasheets, UL/ASTM certifications, and documentation to meet performance and compliance standards.

**AIA-Accredited Training** - Stay ahead with continuing education opportunities designed to deepen product knowledge and support professional development.

Visit Architect's Edge  
[OVERHEADDOOR.COM/ARCHITECTS](https://overheaddoor.com/architects)

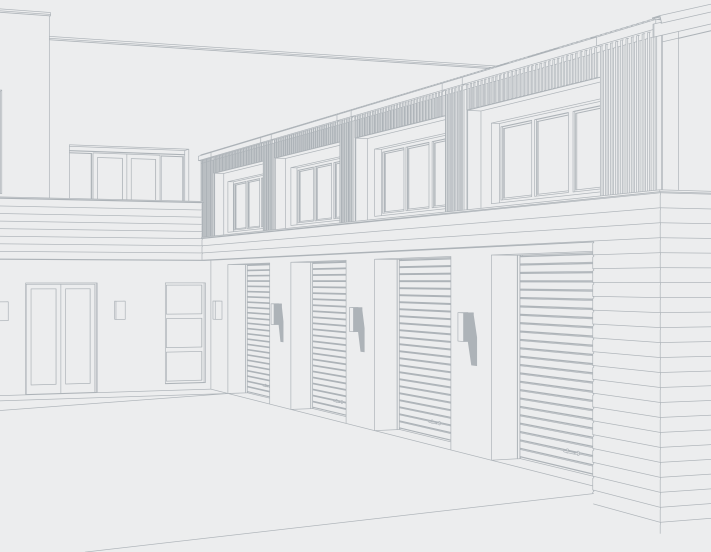
## Continuing Education

Overhead Door Corporation is a Registered Provider of the **American Institute of Architects Continuing Education Systems**. Upon completion, AIA members will earn 1.00 HSW continuing education learning units. Non-AIA members are eligible for a certificate of completion upon request.

### **TWO WAYS TO LEARN**

1. Lunch & Learn – Coordinate the best time for an in-person presentation with lunch at your office.
2. Remote Webinar – Take on-demand courses, which allow you to stop and start at your leisure.

**Courses include:** Upward-Acting Sectional Door Systems, Thermal Performance, Wind Load Design, Upward Rolling Door Systems, Fire Door Systems, Dock Equipment, Commercial Operators and more.



**Schedule Today**

**INFO@OVERHEADDOOR.COM**



**The Genuine. The Original.**



## **THE BRAND BEHIND THE BLUEPRINT.**

Since inventing the sectional garage door in 1921, Overhead Door™ has set the benchmark for innovation, craftsmanship, and service. Today, architects and specifiers continue to choose us for proven performance, design flexibility, and unmatched support across commercial and industrial applications.

**[overheaddoor.com/architects](https://overheaddoor.com/architects)**

©2025 Overhead Door Corporation. Overhead Door is a trademark and the Red Ribbon logo is a registered trademark of Overhead Door Corporation. All other trademarks are the property of their rightful owners. Consistent with our policy of continuing product improvement, we reserve the right to change product specifications without notice or obligation. C900-843 2M 09/25 JAR