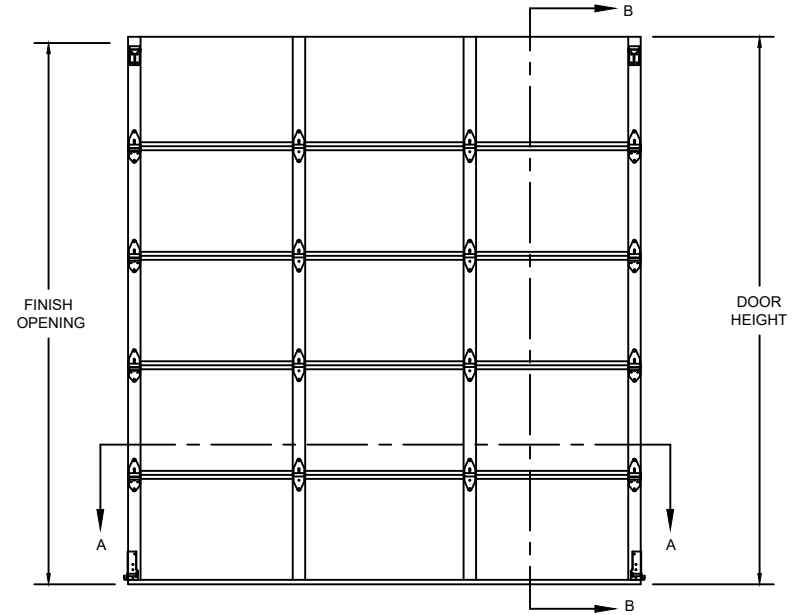
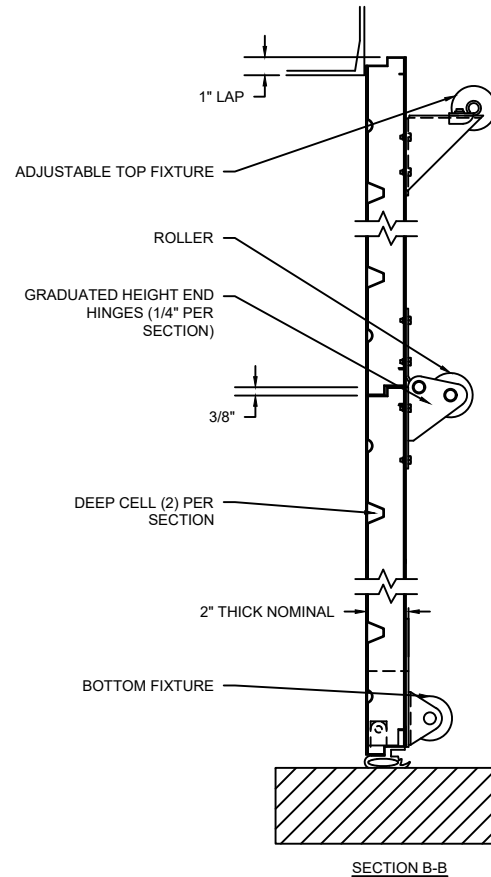
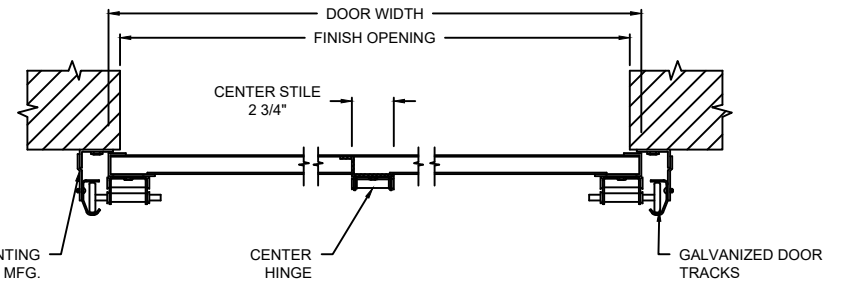


MODEL	STANDARD MAX. VALUES	
	WIDTH	HEIGHT
424	30' 2"	24' 1"

NOTE: 5 SECTION, 3 PANEL DOOR SHOWN.
SECTION AND PANEL QTY WILL VARY.



ELEVATION



SECTION A-A

SECTIONAL STEEL

424 SECTIONAL STEEL DOORS (NON-INSULATED)



DWG. NO.	DATE:	The Genuine. The Original. OVERHEAD DOOR.
SHEET	BY:	

OPTIONS

OPENING WIDTH	
OPENING HEIGHT	
DOOR TRACK SIZE	<input type="checkbox"/> 2" <input type="checkbox"/> 3"
END STILES	<input type="checkbox"/> SINGLE <input type="checkbox"/> DOUBLE
WINDOW OPTIONS	<input type="checkbox"/> NO WINDOW <input type="checkbox"/> 24" X 7" VISION LITE <input type="checkbox"/> FULL-VIEW LITES
SEAL OPTIONS	<input type="checkbox"/> JAMB SEAL <input type="checkbox"/> STANDARD BOTTOM SEAL <input type="checkbox"/> TOP SEAL <input type="checkbox"/> ELECTRIC SAFETY EDGE <input type="checkbox"/> PNEUMATIC SAFETY EDGE
LOCK OPTIONS	<input type="checkbox"/> SLIDE LOCK <input type="checkbox"/> UNILOCK

COMPONENT	MATERIAL	OPERATION	NOTES:
SECTIONS	24 GA. ROLL-FORMED GALVANIZED	MANUAL PUSH UP	- WARRANTY: 1-YEAR LIMITED
CENTER/END STILES	16 GA. STEEL		
HARDWARE	GALVANIZED STEEL		
WEATHERSTRIP	FLEXIBLE PVC		