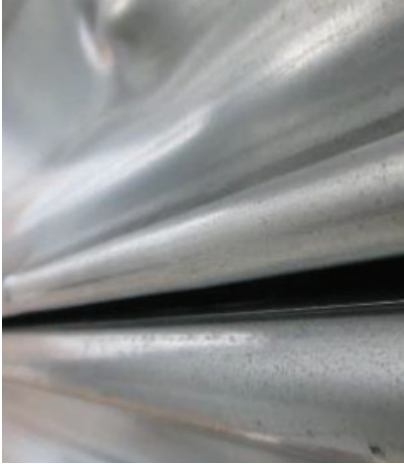


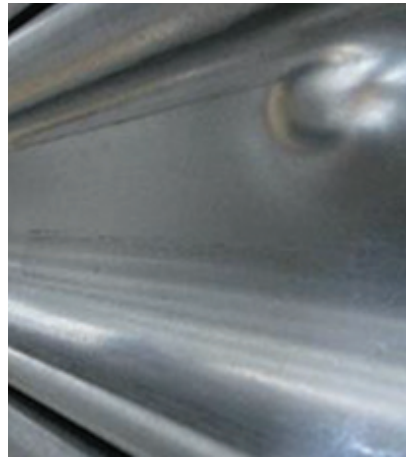
EVERGUARD™ MODEL 610FE



FORCED ENTRY AND BALLISTIC RATED SHELTER DOOR



Specimen #1
.22 caliber, post-test interior



Specimen #2
.32 caliber, post-test interior



Specimen #3
Center of door, post attack
30 min entry time

EVERGUARD™ MODEL 610FE NOW OFFERS A FORCED ENTRY AND BALLISTIC RATING

Meets the ASTM F3038 -21 standard test method for timed evaluation Forced-Entry Resistance Systems and NIJ Standard 0108.01, Ballistic Resistant Protective Materials, National Institute of Justice, September 1985. The Forced Entry time evaluation was completed and rated for 30 minutes along with a Ballistic rating against a -.22 LR: 40 grain, High Velocity lead and -.38 Special: 158 grain, round nose lead.

PERFECT FOR STOREFRONTS, SAFE ROOMS, AND SCHOOLS

Summary of test reports/data are available upon request.



2501 S. State Hwy. 121 Bus., Suite 200, Lewisville, TX 75067
1-800-929-DOOR • sales@overheaddoor.com
www.overheaddoor.com

©2023 Overhead Door Corporation. EverGuard is a trademark and the Ribbon logo is a registered trademark of Overhead Door Corporation. All other trademarks are property of their rightful owners. Consistent with our policy of continuing product improvement, we reserve the right to change product specifications without notice or obligation. C900-1397 04/23



INDUSTRY LEADING
COMMERCIAL & INDUSTRIAL SOLUTIONS