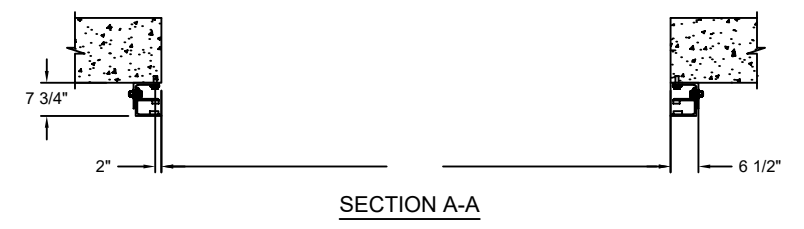
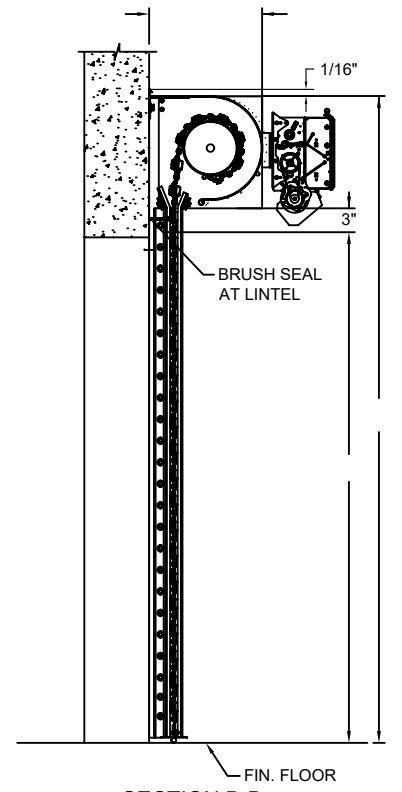
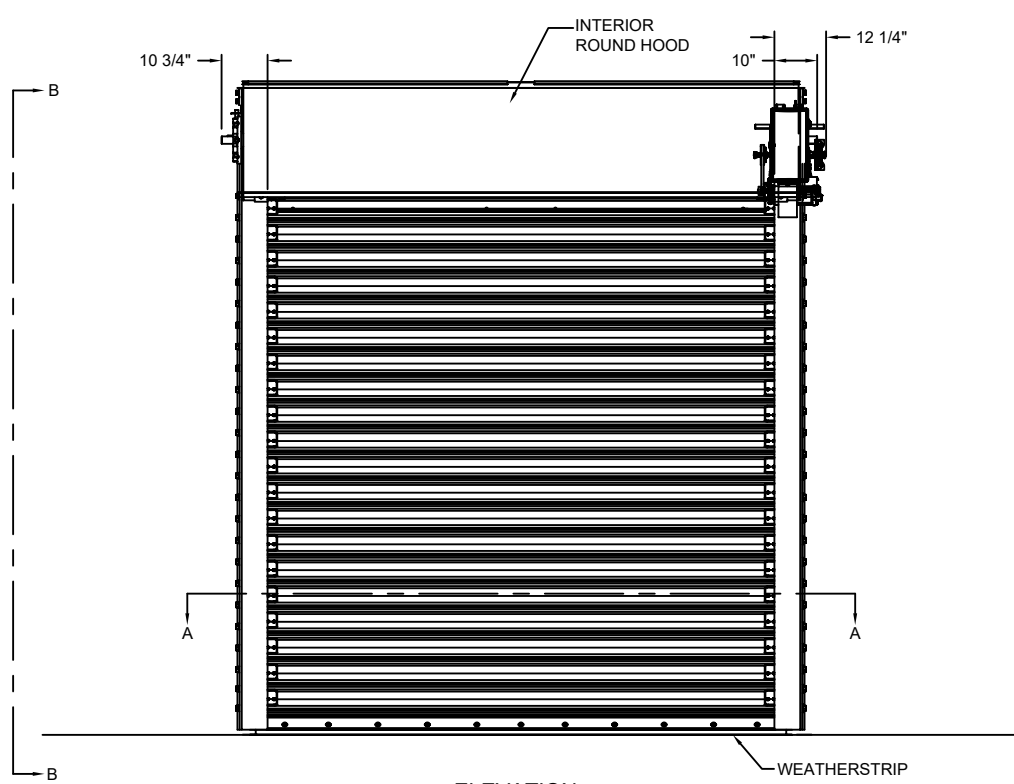
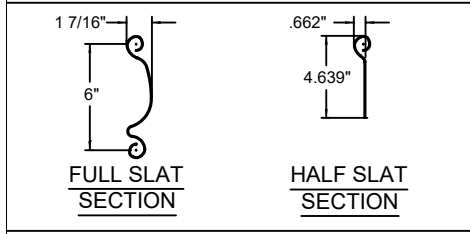


| SPECIFICATIONS | |
|------------------------|--------------------------------|
| DOOR MARK | |
| QUANTITY | |
| WIDTH | |
| HEIGHT | |
| OPERATION | RIGHT HAND, DIRECT DRIVE MOTOR |
| MOUNT | |
| ENDLOCKS | ALTERNATE MALLEABLE IRON |
| RATINGS | FEMA / ICC500 100MPH IMPACT |
| WINDLOAD | |
| WINDLOCKS | |
| MATERIAL | |
| CURTAIN | GALVANIZED STEEL |
| HOOD | 24 GA. GALVANIZED STEEL |
| GUIDES | STEEL ANGLES |
| BOTTOM BAR | STEEL ANGLES |
| FINISH | |
| OTHER FERROUS SURFACES | POWDER COATED BLACK |
| CURTAIN | |
| HOOD | |
| BOTTOM BAR | |
| ACTUATORS | |
| | |
| | |
| | |
| | |
| | |
| | |
| MOTOR | |
| VOLTS | 115V 1-PHASE (208-245V RANGE) |
| HERTZ | |



NOTES :

| | |
|----------------|-------|
| MODEL 610F | |
| PROJECT | |
| ARCHITECT | |
| CONTRACTOR | |
| DISTRIBUTOR | |
| PLANT | |
| DIST. DWG. NO. | DATE: |
| SHEET | BY: |

