

653

ALLURA® SHUTTER



ROLLING SECURITY DOOR



UPSCALE FEATURES.
STYLISH AESTHETICS.
COMPACT DESIGN.



INDUSTRY LEADING
COMMERCIAL & INDUSTRIAL SOLUTIONS



Standard features at a glance

Max height^Δ	14' (4267 mm)
Max width^Δ	20' (6096 mm)
Mounting	Face-of-wall or between jambs mounting
Curtain	Interlocking extruded .05" aluminum slats. Nickel plated, steel screws and end locks to retain curtain within guides and prevent lateral movement. Plastic roller retainers for curtains over 16' wide
Fenestration/perforation	Open fenestration 1" x 1" uniformly spaced openings, full curtain, 24% open area; Perforation full curtain, 22% open area ; Partial fenestration 1" x 1" uniformly spaced openings; Partial perforation
Finishes	Silver powder coat to mimic look of clear anodized aluminum; Bronze powder coat to mimic look of bronze anodized aluminum, White or Almond powder coat
Bottom Bar	Aluminum compact bottom bar with vinyl bulb seal powder coated to match curtain
Brackets	Steel plates powder coated to match curtain

Guides	Extruded aluminum channels with continuous wear strips. Powder coated to match curtain
Hood	Aluminum two piece square hood powder coated to match curtain
Counterbalance	Steel barrel housing counterbalance spring assembly
Operation	Manual push up
Locking	Slide bolts (interior; coil side); left and right slides
Warranty	Limited 2 year warranty for all parts, components and PowderGuard® Premium powder coat finish

Options

- Step angle bottom bar attachment
- Interior crank or electric tube motor with crank for emergency egress manual override
- Slide bolts (exterior; non-coil side) suitable for use with padlocks; left and right slides*
- Cylinder lock*
- PowderGuard® Premium powder coat in approximately 200 colors or custom colors per architect specifications

* Requires interlock with tube motor operation

Δ Maximum height and width are independent of each other and may vary based on slat profile, material and gauge.

Cover image: Perforated slat, PowderGuard® Premium custom powder coat finish

Image above: Standard slat, Standard powder coat finish in White



Perfect for security in high pedestrian traffic areas

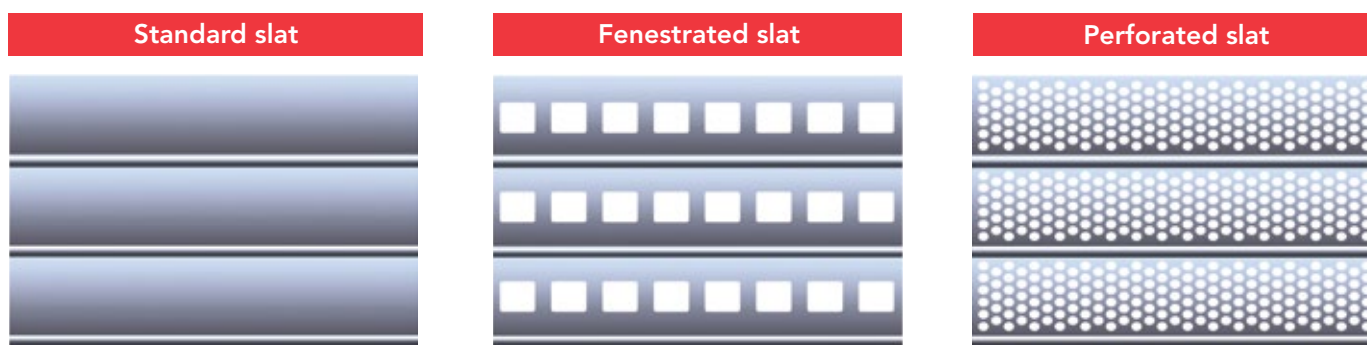
Heavily visited areas such as retail stores, pharmacies and hospitals often need the security that the Allura® shutter door offers as well as the flexibility in the aesthetic options to match the surrounding environment.

Allura® Model 653 is a next generation light-duty door solution that is versatile enough for specialty uses and has a space-saving design, making it perfect for installations with limited side room and headroom. Multiple perforation and fenestration options allow for many configurations with the right amount of light and air passage.



Standard slat, PowderGuard® Premium powder coat finish in Bronze

Slat style



Color options

Standard powder coat finish



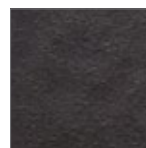
White



Almond



Silver*



Bronze*

* Silver and Bronze powder coat made to mimic anodized aluminum.

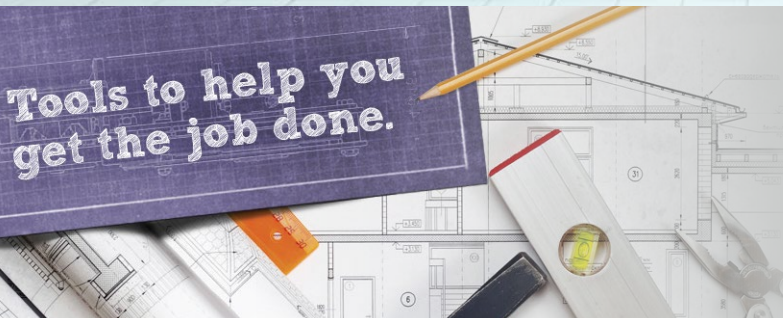
PowderGuard® Premium powder coat finish options are available in approximately 200 colors and can be custom matched to architect specifications.



Actual colors may vary from brochure due to fluctuations in the printing process. Always request a color sample from your Overhead Door™ Distributor for accurate color matching.



Perforated slat, PowderGuard® Premium custom powder coat finish



Architect's Corner

A resource for architects, containing comprehensive technical and resource materials to support your project, including drawings and specifications for commercial doors.

overheaddoor.com

The original, innovative choice for unequalled quality and service.

Overhead Door Corporation pioneered the upward-acting door industry, inventing the first upward-acting door in 1921 and the first electric door operator in 1926. Today, we continue to be the industry leader through the strength of our product innovation, superior craftsmanship and outstanding customer support, underscoring a legacy of quality, expertise and integrity. That's why design and construction professionals specify Overhead Door™ products more often than any other brand. Our family of over 400 Overhead Door™ Distributors across the U.S. and Canada not only share our name and logo, but also our commitment to excellence.



INDUSTRY LEADING
COMMERCIAL & INDUSTRIAL SOLUTIONS



2501 S. State Hwy. 121 Bus., Suite 200, Lewisville, TX 75067
1-800-929-DOOR • sales@overheaddoor.com
overheaddoor.com