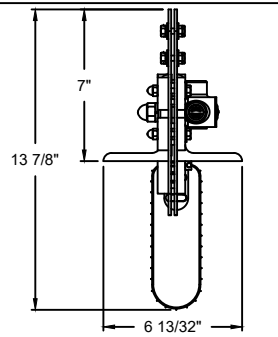
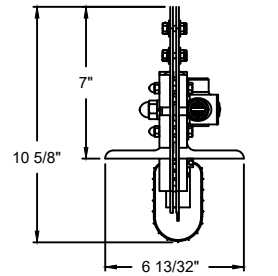


MODEL	STANDARD MAX. VALUES	
	WIDTH	HEIGHT
995LH	22'	10'



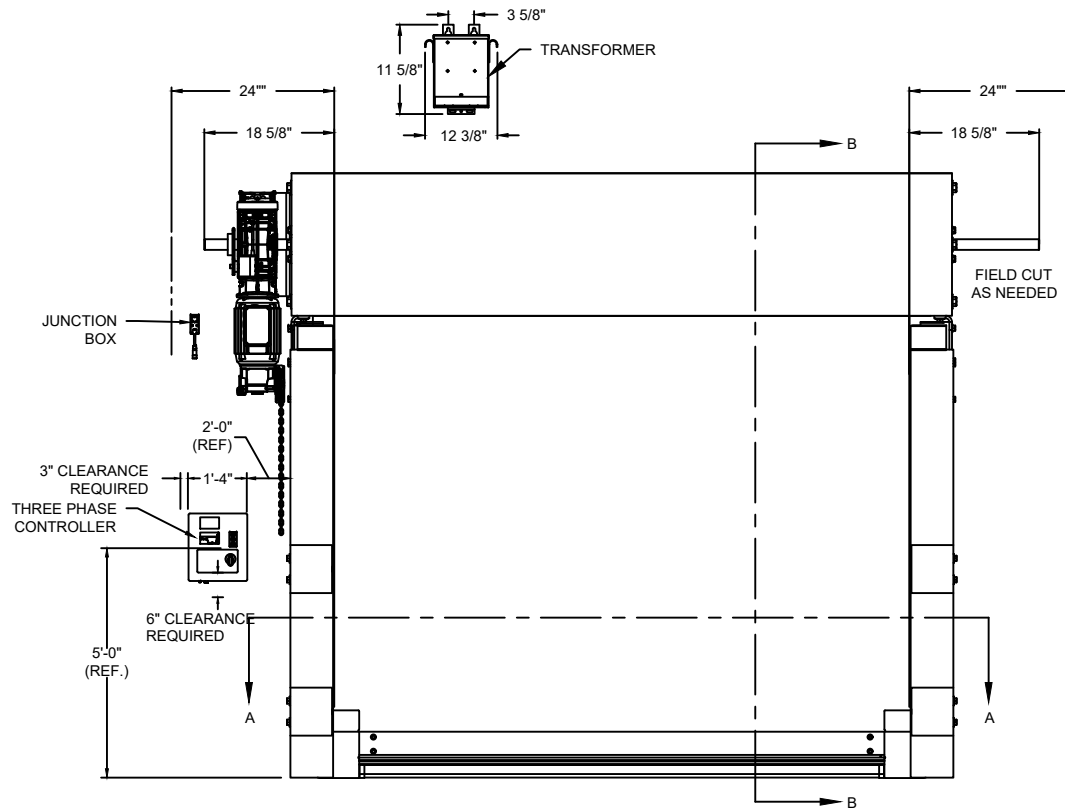
LARGE BOTTOM BAR DETAIL



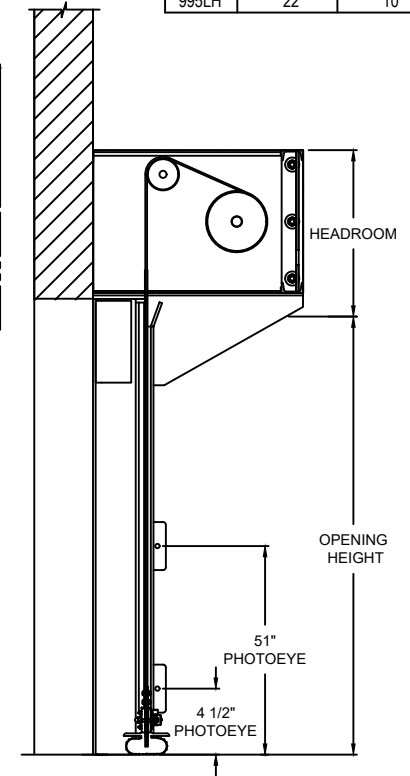
SMALL BOTTOM BAR DETAIL

OPTIONS

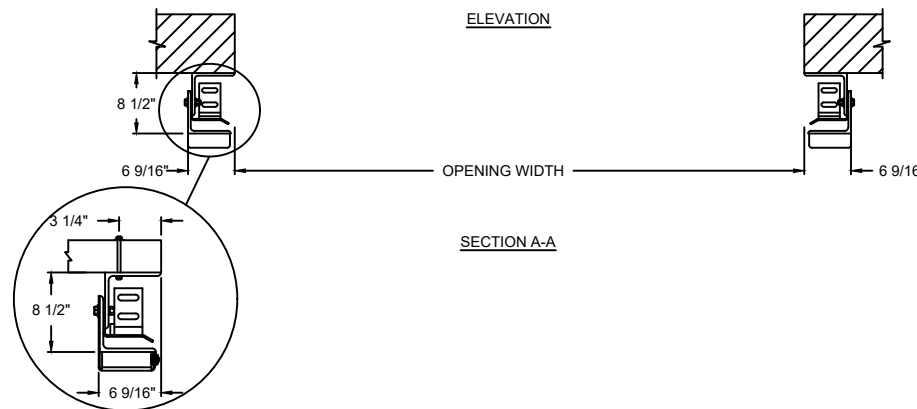
OPENING WIDTH*	
OPENING HEIGHT*	
WINDOW OPTIONS	<input type="checkbox"/> 20" H VISION
HOOD OPTIONS	<input type="checkbox"/> SLOPED <input type="checkbox"/> STANDARD
HOUSING OPTIONS	<input type="checkbox"/> WITH MOTOR HOUSING <input type="checkbox"/> WITHOUT MOTOR HOUSING
BOTTOM BAR OPTIONS	<input type="checkbox"/> SMALL <input type="checkbox"/> LARGE



ELEVATION



SECTION B-B



SECTION A-A

DETAIL
JAMB FASTENERS

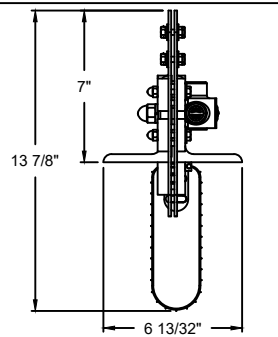
COMPONENT	MATERIAL	OPERATION	NOTES:
HOOD	22 GA. STEEL	MOTOR LH 208V 3-PHASE VIA TRANSFORMER (190-270V RANGE)	1. WINDLOAD 27 P.S.F ULTIMATE @ 19' WIDE 2. HEADROOM: 12" FOR 8' TO 14' WIDE DOORS, 13" FOR 15' TO 18' WIDE DOORS, 15" FOR 19' TO 22' WIDE DOORS * PLEASE REFER TO WALL GUIDE FOR COMPLETE LIST OF BUILDING SPECIFICATIONS
CURTAIN	LAYERS OF NBR RUBBER WITH 2 LAYERS POLYESTER WEAVE		
GUIDES	HIGH STRENGTH STEEL		
BOTTOM BAR	HIGH STRENGTH STEEL DOUBLE ANGLE		

RAPIDFLEX®

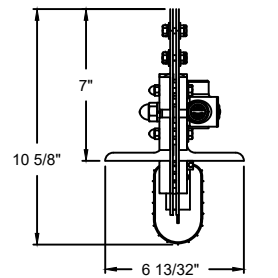
995LH EXTREME EXTERIOR HIGH SPEED RUBBER DOOR WITH LOW HEADROOM HEADPLATE

DWG. NO.	DATE:	The Genuine. The Original. OVERHEAD DOOR
SHEET	BY:	

MODEL	STANDARD MAX. VALUES	
	WIDTH	HEIGHT
995LH	22'	10'



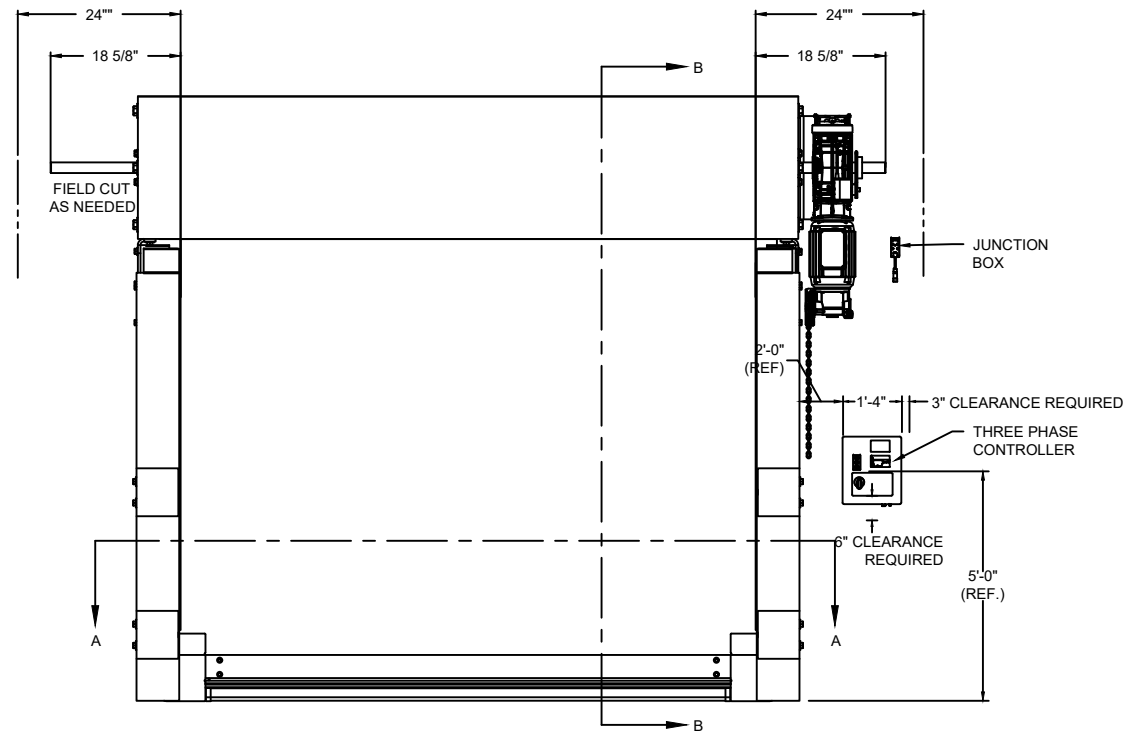
LARGE BOTTOM BAR DETAIL



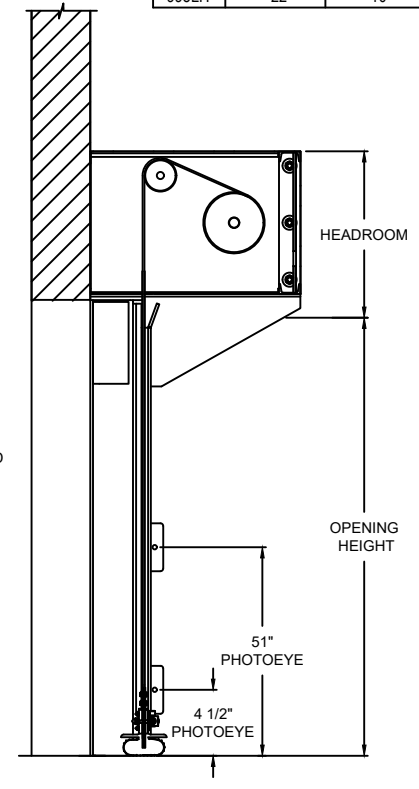
SMALL BOTTOM BAR DETAIL

OPTIONS

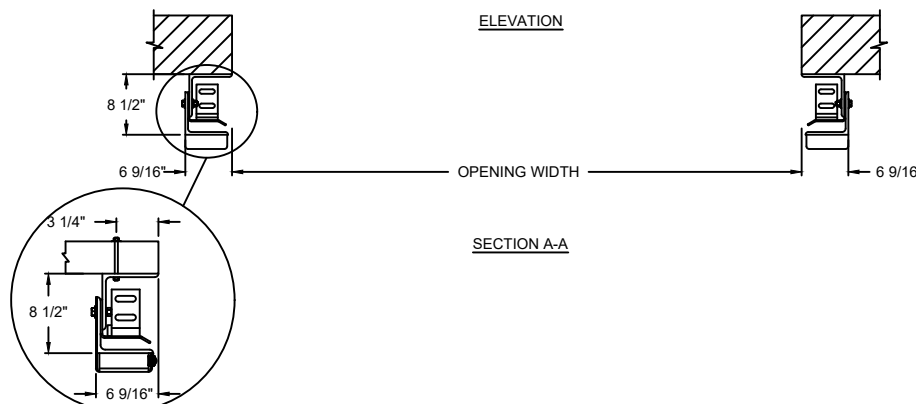
OPENING WIDTH*	
OPENING HEIGHT*	
WINDOW OPTIONS	<input type="checkbox"/> 20" H VISION
HOOD OPTIONS	<input type="checkbox"/> SLOPED <input type="checkbox"/> STANDARD
HOUSING OPTIONS	<input type="checkbox"/> WITH MOTOR HOUSING <input type="checkbox"/> WITHOUT MOTOR HOUSING
BOTTOM BAR OPTIONS	<input type="checkbox"/> SMALL <input type="checkbox"/> LARGE



ELEVATION



SECTION B-B



SECTION A-A

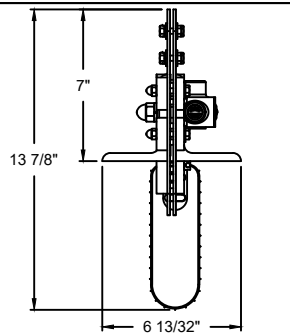
DETAIL JAMB FASTENERS

COMPONENT	MATERIAL	OPERATION	NOTES:
HOOD	22 GA. STEEL	MOTOR RH 208V 3-PHASE VIA TRANSFORMER (190-270V RANGE)	1. WINDLOAD 27 P.S.F ULTIMATE @ 19' WIDE 2. HEADROOM: 12" FOR 8' TO 14' WIDE DOORS, 13" FOR 15' TO 18' WIDE DOORS, 15" FOR 19' TO 22' WIDE DOORS * PLEASE REFER TO WALL GUIDE FOR COMPLETE LIST OF BUILDING SPECIFICATIONS
CURTAIN	LAYERS OF NBR RUBBER WITH 2 LAYERS POLYESTER WEAVE		
GUIDES	HIGH STRENGTH STEEL		
BOTTOM BAR	HIGH STRENGTH STEEL DOUBLE ANGLE		

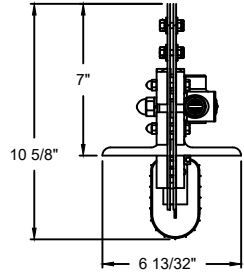
RAPIDFLEX®

995LH EXTREME EXTERIOR HIGH SPEED RUBBER DOOR WITH LOW HEADROOM HEADPLATE

DWG. NO.	DATE:	The Genuine. The Original. OVERHEAD DOOR
SHEET	BY:	

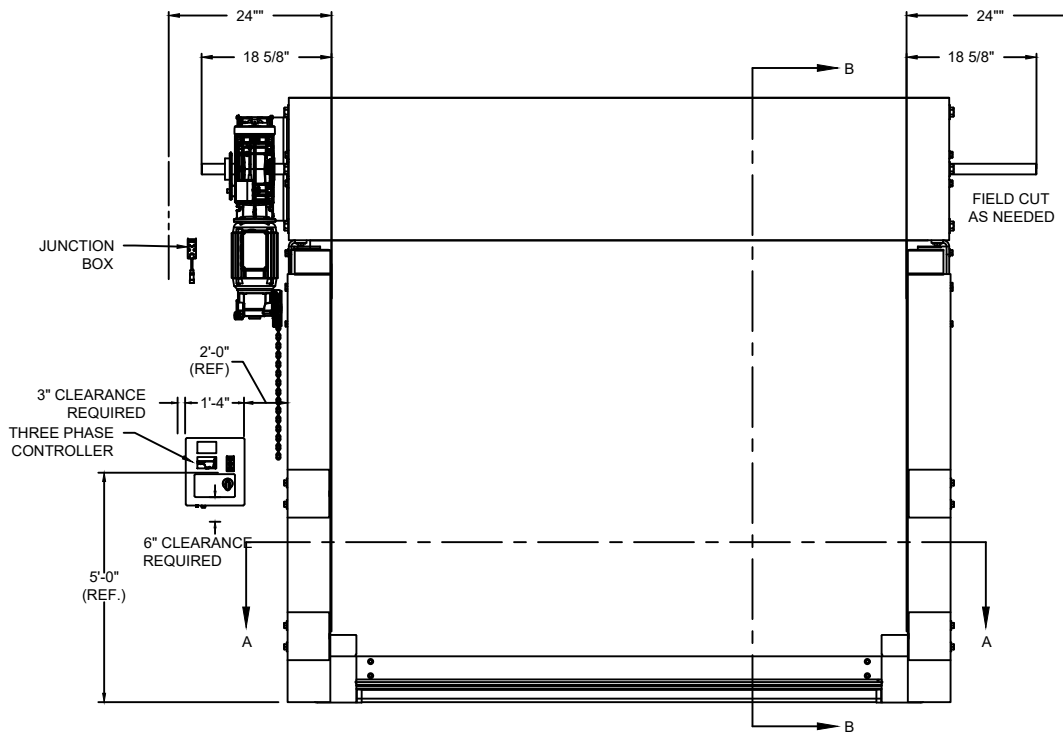


LARGE BOTTOM BAR DETAIL

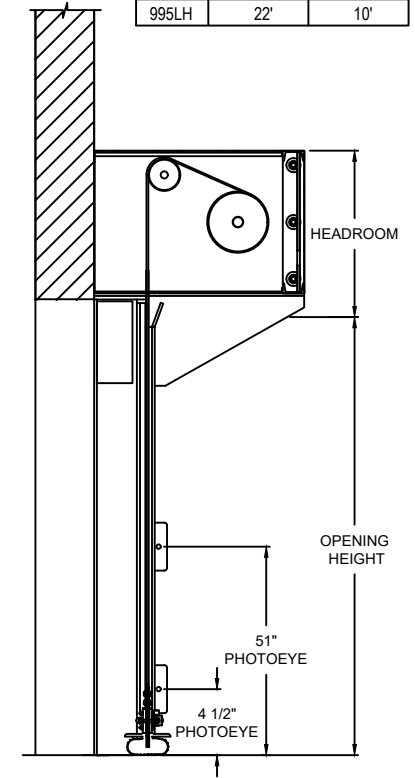


SMALL BOTTOM BAR DETAIL

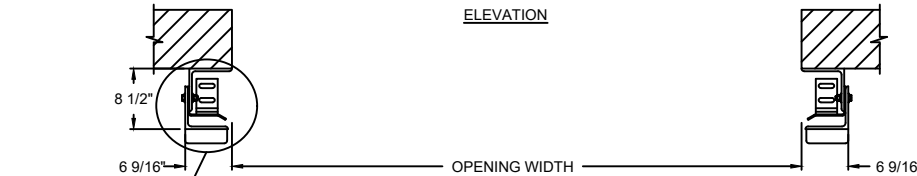
MODEL	STANDARD MAX. VALUES	
	WIDTH	HEIGHT
995LH	22'	10'



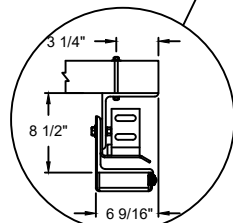
ELEVATION



SECTION B-B



SECTION A-A



DETAIL JAMB FASTENERS

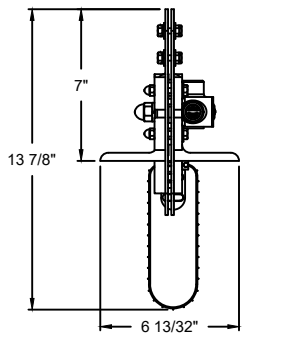
OPTIONS	
OPENING WIDTH*	
OPENING HEIGHT*	
WINDOW OPTIONS	<input type="checkbox"/> 20" H VISION
HOOD OPTIONS	<input type="checkbox"/> SLOPED <input type="checkbox"/> STANDARD
HOUSING OPTIONS	<input type="checkbox"/> WITH <input type="checkbox"/> WITHOUT
BOTTOM BAR OPTIONS	<input type="checkbox"/> SMALL <input type="checkbox"/> LARGE
VOLTS OPTIONS	<input type="checkbox"/> 230V 3-PHASE <input type="checkbox"/> 460V 3-PHASE

COMPONENT	MATERIAL	OPERATION	NOTES:
HOOD	22 GA. STEEL	MOTOR LH	1. WINDLOAD 27 P.S.F ULTIMATE @ 19' WIDE 2. HEADROOM: 12" FOR 8' TO 14' WIDE DOORS, 13" FOR 15' TO 18' WIDE DOORS, 15" FOR 19' TO 22' WIDE DOORS * PLEASE REFER TO WALL GUIDE FOR COMPLETE LIST OF BUILDING SPECIFICATIONS
CURTAIN	LAYERS OF NBR RUBBER WITH 2 LAYERS POLYESTER WEAVE		
GUIDES	HIGH STRENGTH STEEL		
BOTTOM BAR	HIGH STRENGTH STEEL DOUBLE ANGLE		

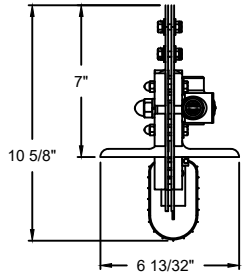
RAPIDFLEX®

995LH EXTREME EXTERIOR HIGH SPEED RUBBER DOOR WITH LOW HEADROOM HEADPLATE

DWG. NO.	DATE:	
SHEET	BY:	



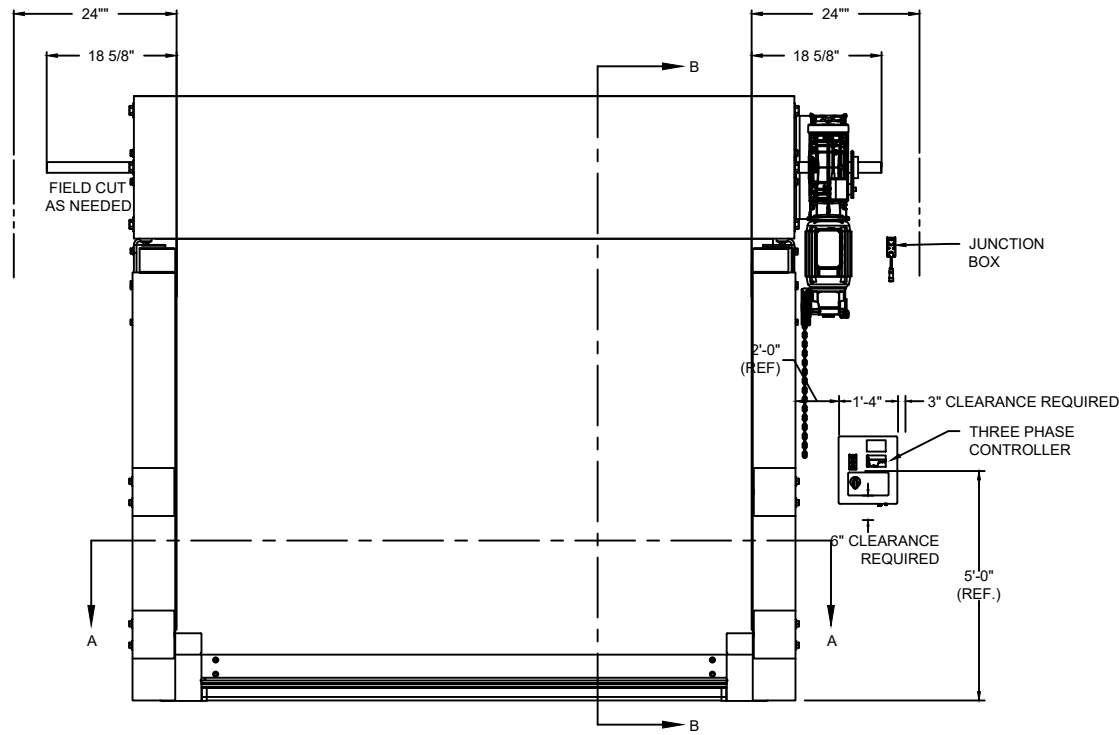
LARGE BOTTOM BAR DETAIL



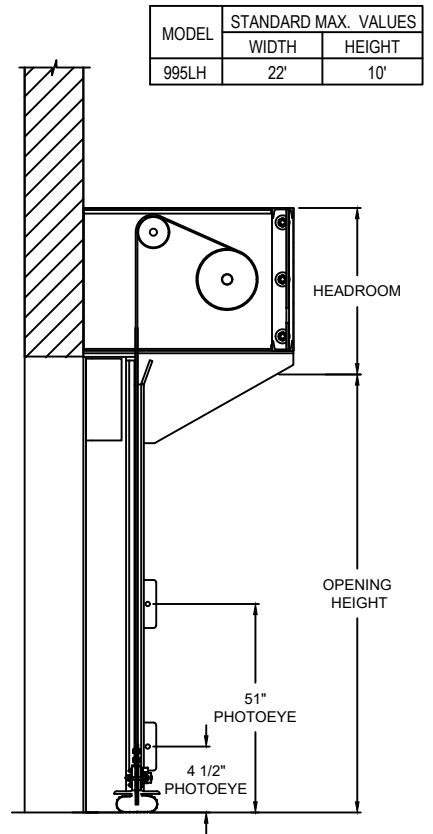
SMALL BOTTOM BAR DETAIL

OPTIONS

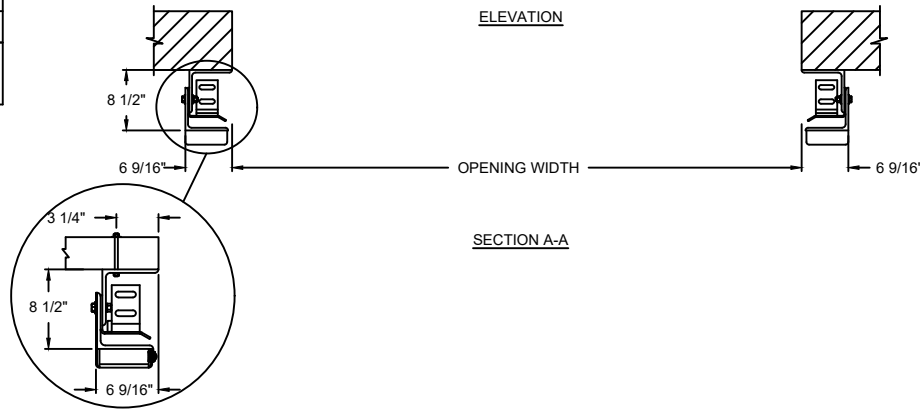
OPENING WIDTH*	
OPENING HEIGHT*	
WINDOW OPTIONS	<input type="checkbox"/> 20" H VISION
HOOD OPTIONS	<input type="checkbox"/> SLOPED <input type="checkbox"/> STANDARD
HOUSING OPTIONS	<input type="checkbox"/> WITH <input type="checkbox"/> WITHOUT
BOTTOM BAR OPTIONS	<input type="checkbox"/> SMALL <input type="checkbox"/> LARGE
VOLTS OPTIONS	<input type="checkbox"/> 230V 3-PHASE <input type="checkbox"/> 460V 3-PHASE



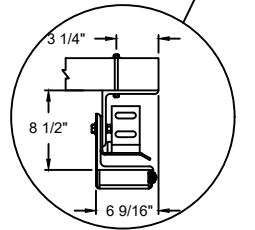
ELEVATION



SECTION B-B



SECTION A-A



DETAIL JAMB FASTENERS

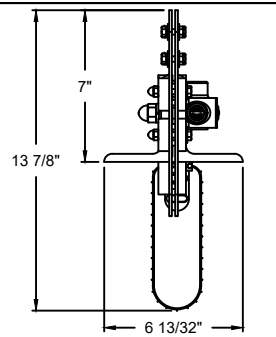
COMPONENT	MATERIAL	OPERATION	NOTES:
HOOD	22 GA. STEEL	MOTOR RH	1. WINDLOAD 27 P.S.F ULTIMATE @ 19' WIDE 2. HEADROOM: 12" FOR 8' TO 14' WIDE DOORS, 13" FOR 15' TO 18' WIDE DOORS, 15" FOR 19' TO 22' WIDE DOORS * PLEASE REFER TO WALL GUIDE FOR COMPLETE LIST OF BUILDING SPECIFICATIONS
CURTAIN	LAYERS OF NBR RUBBER WITH 2 LAYERS POLYESTER WEAVE		
GUIDES	HIGH STRENGTH STEEL		
BOTTOM BAR	HIGH STRENGTH STEEL DOUBLE ANGLE		

RAPIDFLEX®

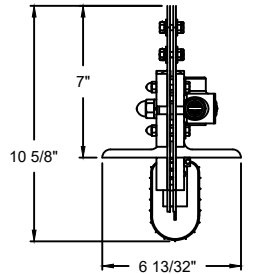
995LH EXTREME EXTERIOR HIGH SPEED RUBBER DOOR WITH LOW HEADROOM HEADPLATE

DWG. NO.	DATE:	The Genuine. The Original. OVERHEAD DOOR®
SHEET	BY:	

MODEL	STANDARD MAX. VALUES	
	WIDTH	HEIGHT
995LH	22'	10'



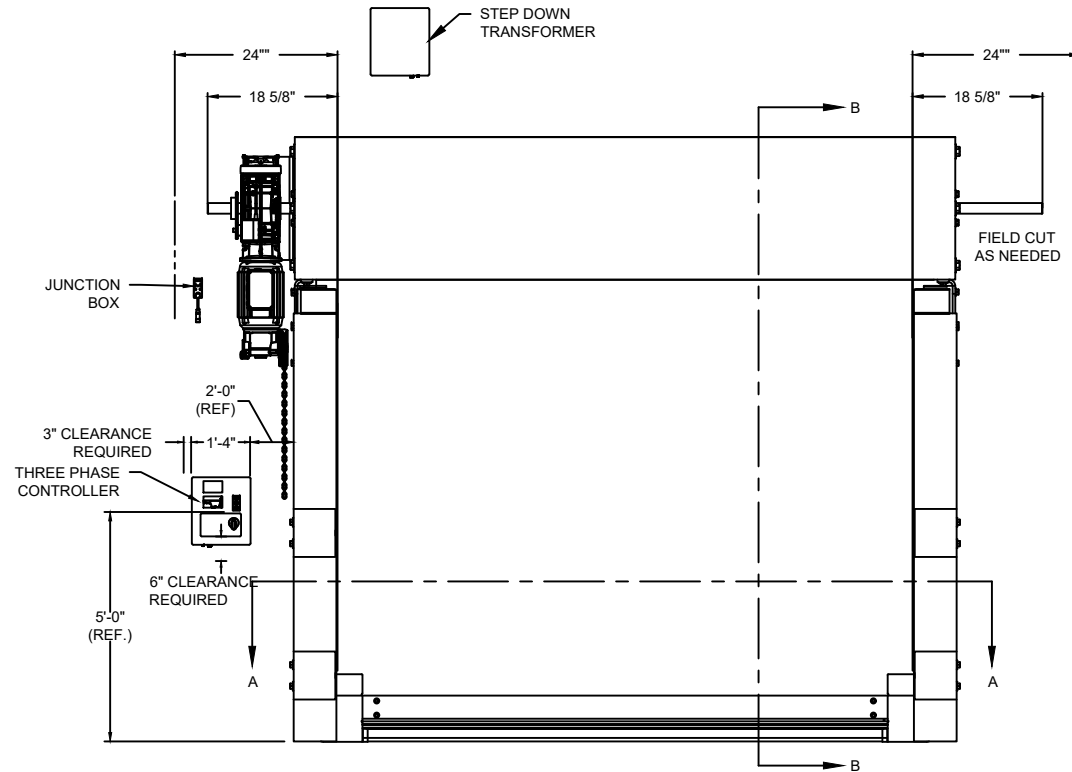
LARGE BOTTOM BAR DETAIL



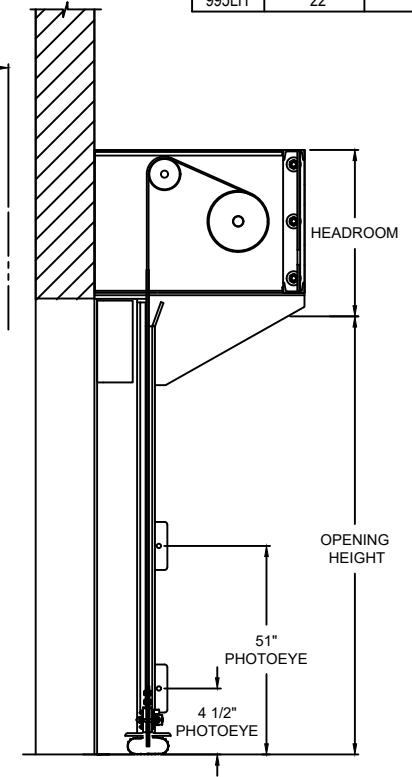
SMALL BOTTOM BAR DETAIL

OPTIONS

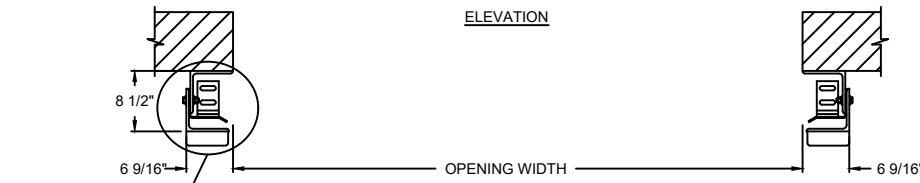
OPENING WIDTH*	
OPENING HEIGHT*	
WINDOW OPTIONS	<input type="checkbox"/> 20" H VISION
HOOD OPTIONS	<input type="checkbox"/> SLOPED <input type="checkbox"/> STANDARD
HOUSING OPTIONS	<input type="checkbox"/> WITH MOTOR HOUSING <input type="checkbox"/> WITHOUT MOTOR HOUSING
BOTTOM BAR OPTIONS	<input type="checkbox"/> SMALL <input type="checkbox"/> LARGE



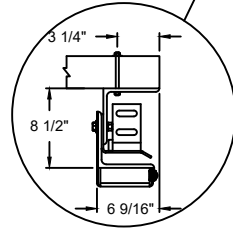
ELEVATION



SECTION B-B



SECTION A-A



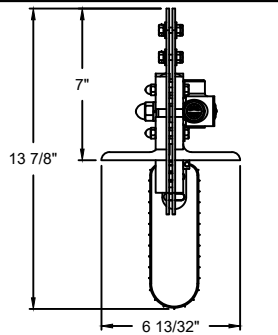
DETAIL
JAMB FASTENERS

COMPONENT	MATERIAL	OPERATION	NOTES:
HOOD	22 GA. STEEL	MOTOR RH 575V 3-PHASE	1. WINDLOAD 27 P.S.F ULTIMATE @ 19' WIDE 2. HEADROOM: 12" FOR 8' TO 14' WIDE DOORS, 13" FOR 15' TO 18' WIDE DOORS, 15" FOR 19' TO 22' WIDE DOORS * PLEASE REFER TO WALL GUIDE FOR COMPLETE LIST OF BUILDING SPECIFICATIONS
CURTAIN	LAYERS OF NBR RUBBER WITH 2 LAYERS POLYESTER WEAVE		
GUIDES	HIGH STRENGTH STEEL		
BOTTOM BAR	HIGH STRENGTH STEEL DOUBLE ANGLE		

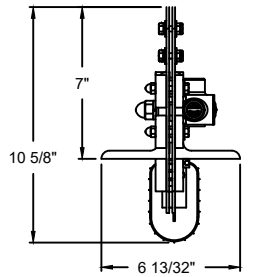
RAPIDFLEX®

995LH EXTREME EXTERIOR HIGH SPEED RUBBER DOOR WITH LOW HEADROOM HEADPLATE

DWG. NO.	DATE:	The Genuine. The Original.
SHEET	BY:	



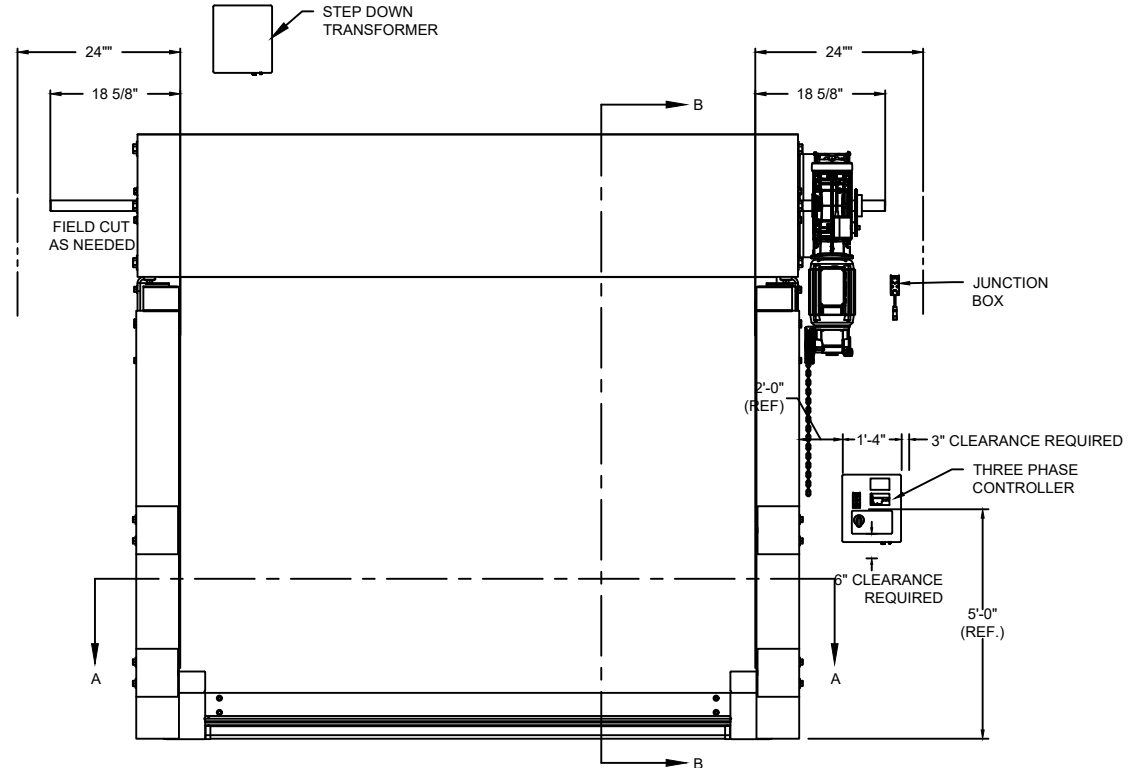
LARGE BOTTOM BAR DETAIL



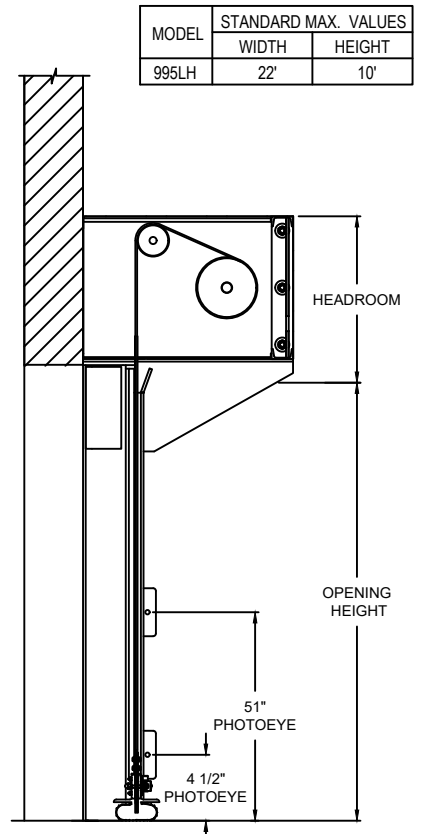
SMALL BOTTOM BAR DETAIL

OPTIONS

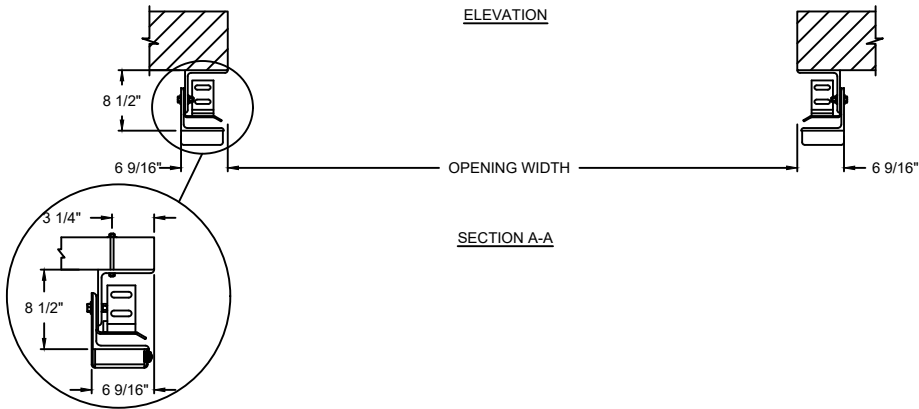
OPENING WIDTH*	
OPENING HEIGHT*	
WINDOW OPTIONS	<input type="checkbox"/> 20" H VISION
HOOD OPTIONS	<input type="checkbox"/> SLOPED <input type="checkbox"/> STANDARD
HOUSING OPTIONS	<input type="checkbox"/> WITH MOTOR HOUSING <input type="checkbox"/> WITHOUT MOTOR HOUSING
BOTTOM BAR OPTIONS	<input type="checkbox"/> SMALL <input type="checkbox"/> LARGE



ELEVATION



SECTION B-B



SECTION A-A

DETAIL JAMB FASTENERS

COMPONENT	MATERIAL	OPERATION	NOTES:
HOOD	22 GA. STEEL	MOTOR RH 575V 3-PHASE	1. WINDLOAD 27 P.S.F ULTIMATE @ 19' WIDE 2. HEADROOM: 12" FOR 8' TO 14' WIDE DOORS, 13" FOR 15' TO 18' WIDE DOORS, 15" FOR 19' TO 22' WIDE DOORS * PLEASE REFER TO WALL GUIDE FOR COMPLETE LIST OF BUILDING SPECIFICATIONS
CURTAIN	LAYERS OF NBR RUBBER WITH 2 LAYERS POLYESTER WEAVE		
GUIDES	HIGH STRENGTH STEEL		
BOTTOM BAR	HIGH STRENGTH STEEL DOUBLE ANGLE		

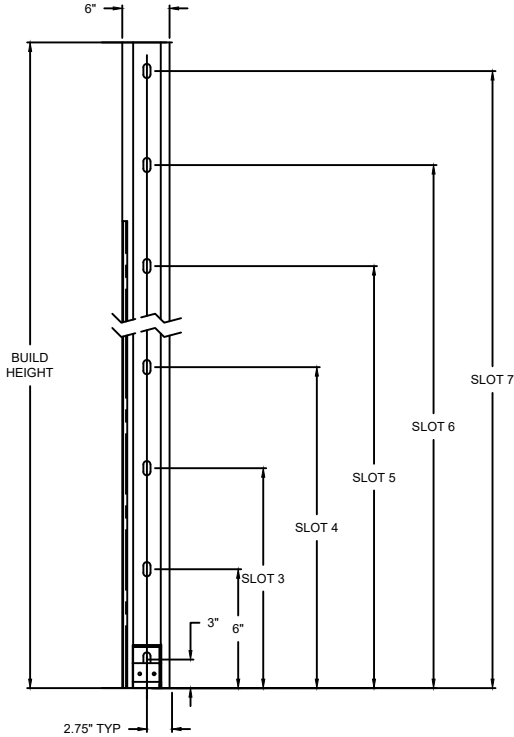
RAPIDFLEX®

995LH EXTREME EXTERIOR HIGH SPEED RUBBER DOOR WITH LOW HEADROOM HEADPLATE

DWG. NO.	DATE:	The Genuine. The Original.
SHEET	BY:	

Build Height (ft)	Build Height (in)	Hole 1 (Starting from bottom)	Hole 2	Hole 3	Hole 4	Hole 5	Hole 6	Hole 7	Hole 8	Hole 9	Hole 10	Hole 11	Hole 12
6	72	3	6	24	42	49.5	52.5	54	57	62			
6.5	78	3	6	20	32	49.5	52.5	60	63	68			
7	84	3	6	20	35	49.5	52.5	66	69	74			
7.5	90	3	6	24	42	49.5	52.5	60	72	75	80		
8	96	3	6	20	32	49.5	52.5	66	78	81	86		
8.5	102	3	6	20	35	49.5	52.5	66	84	87	92		
9	108	3	6	24	42	49.5	52.5	66	78	90	93	98	
9.5	114	3	6	20	32	49.5	52.5	72	84	96	99	104	
10	120	3	6	20	35	49.5	52.5	66	78	90	102	105	110

Legend
Top Photo Eye Holes
Bottom Photo Eye Holes
Splice 0



JAMB DETAIL
SHOWING 7 SLOTS

RAPIDFLEX®

995LH EXTREME EXTERIOR HIGH SPEED RUBBER DOOR WITH
LOW HEADROOM HEADPLATE

DWG. NO.	DATE:	The Genuine. The Original. OVERHEAD DOOR
SHEET	BY:	