



STRUTTED EXTERIOR MAXIMUM STRENGTH HIGH SPEED FABRIC DOOR

**PERFECT FOR LARGE OPENINGS, MANUFACTURING, MINING, AUTO/TRANSIT, PARKING GARAGES, WAREHOUSE AND DISTRIBUTION FACILITIES**

- **Engineered for high cycles**
 - Springless design for minimal maintenance
 - Direct-mounted gear drive minimizes wear and tear
 - Variable frequency drive eliminates sudden jolts from door start/stop
- **Heavy-duty guide construction** – 0.188" thick high strength steel
- **Articulating wind strut design** with patented roller windlock reduces noise and allows for quick panel replacement while reducing curtain deflection under pressure; allows door to operate under wind load
- **Low maintenance** breakaway design with impact detection and push button self-repair; plug and play wiring
- **Optional programmable LED lighting system**
- **Standard hood** blocks moisture and debris from impeding door operation



INDUSTRY LEADING
COMMERCIAL & INDUSTRIAL SOLUTIONS

MODEL 994 STRUTTED EXTERIOR MAXIMUM STRENGTH HIGH SPEED FABRIC DOOR

Standard Features at a Glance

Maximum Width	24'
Maximum Height	18' at 24' wide or 20' at 23' wide
Maximum Opening Speed	Up to 55"/sec
Maximum Closing Speed	Up to 40"/sec
Breakaway Self Reset	Yes
Wind Load*	Up to 22.0 psf
Hinged Wind Strut	4" articulating hinged roller wind strut
Curtain Material	3 layers of PVC-coated polyester with 2 layers of polyester weave
Operation	Direct drive motor and gearbox system with field changeable universal handing and door stop safety device
Control Panel	Variable frequency drive NEMA 4X cULus listed; Onboard self diagnostic and service reminder; Built-in padlockable fused disconnect
Obstruction Safety Detection	Infrared sensors mounted in-plane to the door curtain at 18" and 50" - 54" from floor
Reversing Safety Edge	Wireless reversing edge
Available Supply Voltage	208V AC 3PH [†] , 230V AC 3PH, 460V AC 3PH, 575V AC 3PH [†] ([†] requires stand-alone mounted transformer)
Hinged Guides	Provide easy access for maintenance
Warranty	5-Year Limited

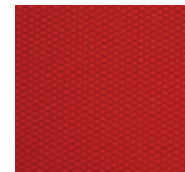
Options

- **Actuation options** – Push button, key switch, pull switch, loop detector, motion detector, treadle switch, radio control. Wireless options available
- **Signaling device options** – Red/green LED warning light, horn/strobe combination, rotating warning light
- **Programmable LED lighting system** – 3' tall light bar with red, yellow, green lighting
- **20" high vision panels** – spaced evenly across width of door
- **Light Curtain** – Front or rear mounted; available in 3' or 6' models

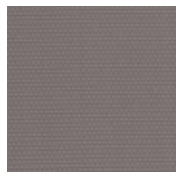
Curtain Color Options



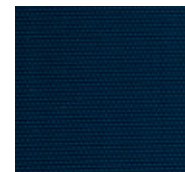
Orange



Red



Gray



Blue

Standard color for guides and bottom bar is yellow. Approximately 200 optional RAL powder coat colors are also available.



Actual colors may vary from brochure due to fluctuation in the printing process. **Always request a color sample from your Overhead Door™ Distributor for accurate color matching.**

* Wind load is the ultimate pressure tested at door width of 20'.



Articulating roller wind strut



Bottom windlock



2501 S. State Hwy. 121 Bus., Suite 200, Lewisville, TX 75067
1-800-929-DOOR • sales@overheaddoor.com
overheaddoor.com