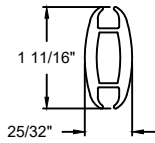


BOTTOM BAR DETAIL

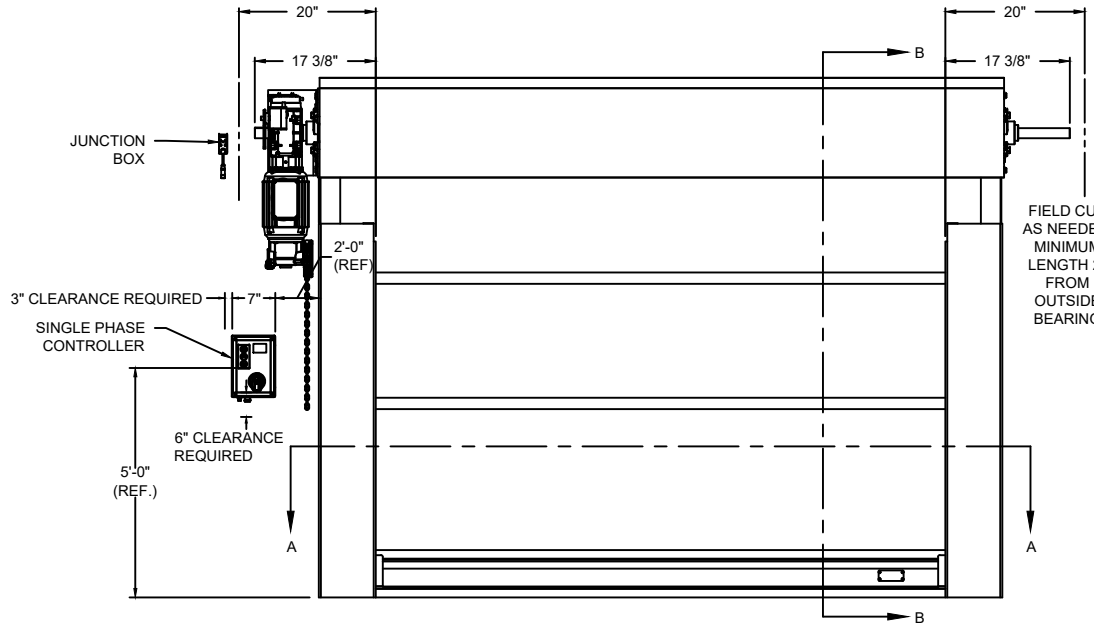


STRUT DETAIL

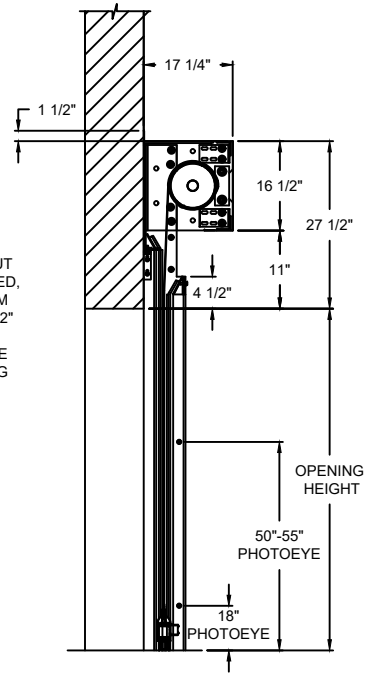
OPTIONS

OPENING WIDTH*	
OPENING HEIGHT*	
WINDOW OPTIONS	<input type="checkbox"/> 20" H VISION
VOLTS OPTIONS	<input type="checkbox"/> 115V 1-PHASE <input type="checkbox"/> 230V 1-PHASE
HOOD OPTIONS	<input type="checkbox"/> SLOPED <input type="checkbox"/> STANDARD
HOUSING OPTIONS	<input type="checkbox"/> WITH MOTOR HOUSING <input type="checkbox"/> WITHOUT MOTOR HOUSING

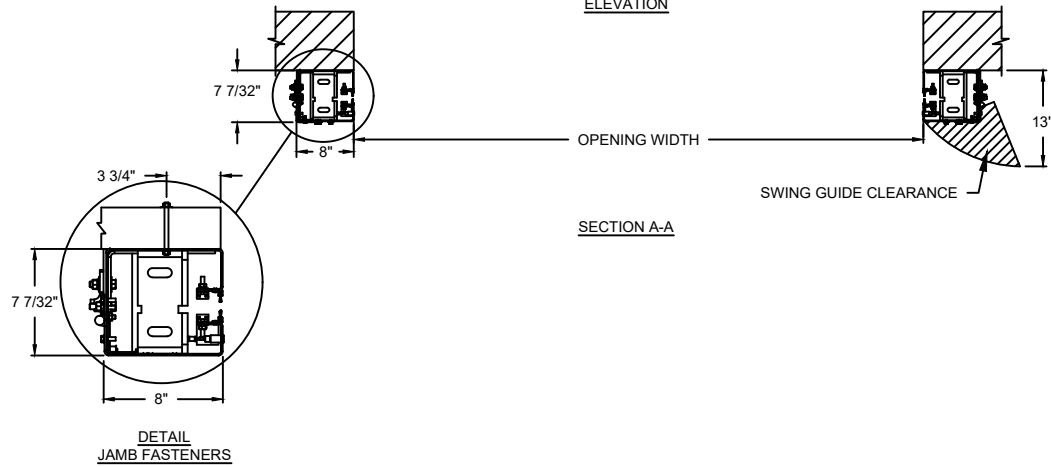
MODEL	STANDARD MAX. VALUES	
	WIDTH	HEIGHT
993	20'	20'



ELEVATION



SECTION B-B



SECTION A-A

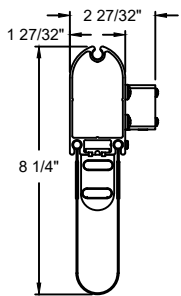
DETAIL  
JAMB FASTENERS

COMPONENT	MATERIAL	OPERATION	NOTES:
HOOD	22 GA. STEEL	MOTOR LH	1. WINDLOAD 19 P.S.F ULTIMATE @ 20' WIDE * PLEASE REFER TO WALL GUIDE FOR COMPLETE LIST OF BUILDING SPECIFICATIONS
CURTAIN	3 LAYER PVC COATED POLYESTER WITH 2 LAYERS POLYESTER WEAVE		
GUIDES	HIGH STRENGTH STEEL		
BOTTOM BAR	EXTRUDED ALUMINUM		

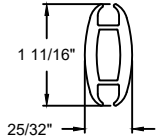
**RAPIDFLEX®**

993 STRUTTED EXTERIOR HIGH SPEED FABRIC DOOR

DWG. NO.	DATE:	The Genuine. The Original. OVERHEAD DOOR
SHEET	BY:	



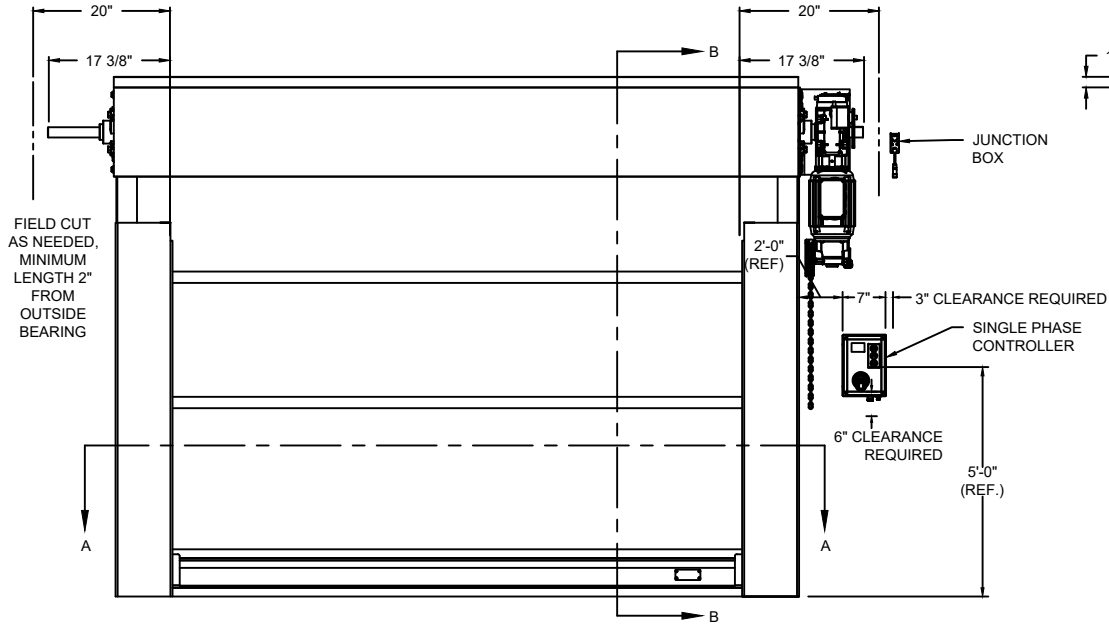
**BOTTOM BAR DETAIL**



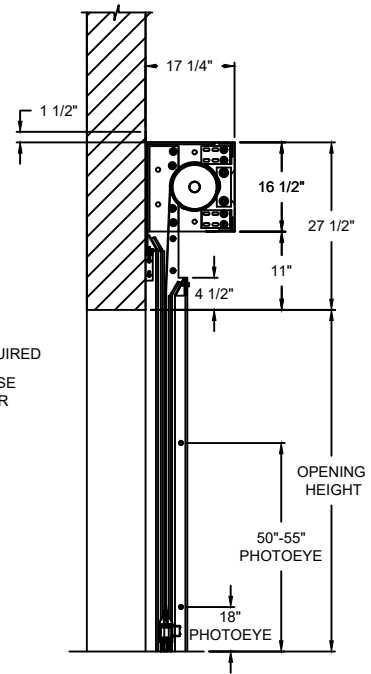
**STRUT DETAIL**

**OPTIONS**

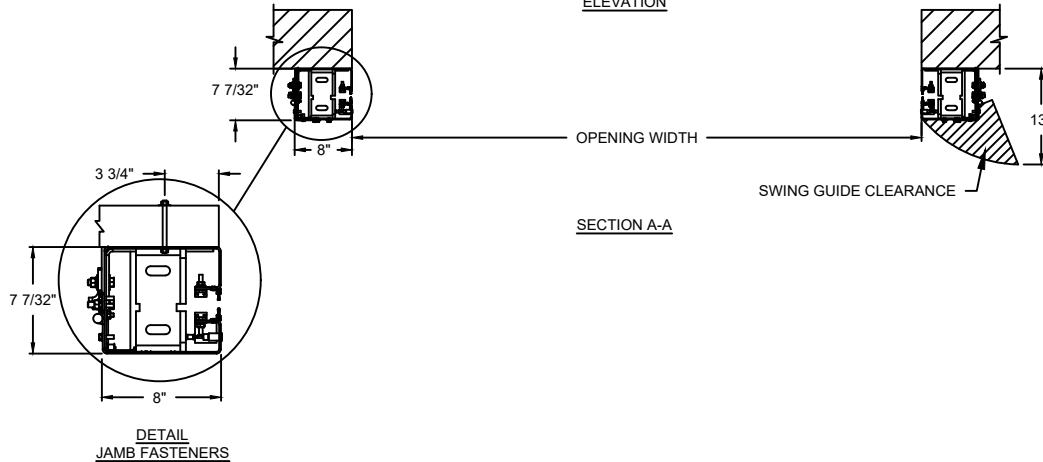
OPENING WIDTH*	
OPENING HEIGHT*	
WINDOW OPTIONS	<input type="checkbox"/> 20" H VISION
VOLTS OPTIONS	<input type="checkbox"/> 115V 1-PHASE <input type="checkbox"/> 230V 1-PHASE
HOOD OPTIONS	<input type="checkbox"/> SLOPED <input type="checkbox"/> STANDARD
HOUSING OPTIONS	<input type="checkbox"/> WITH MOTOR HOUSING <input type="checkbox"/> WITHOUT MOTOR HOUSING



**ELEVATION**



**SECTION B-B**



**SECTION A-A**

**DETAIL  
JAMB FASTENERS**

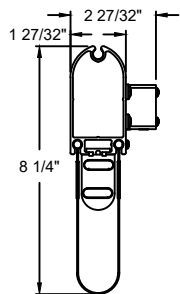
COMPONENT	MATERIAL	OPERATION	NOTES:
HOOD	22 GA. STEEL	MOTOR RH	1. WINDLOAD 19 P.S.F ULTIMATE @ 20' WIDE * PLEASE REFER TO WALL GUIDE FOR COMPLETE LIST OF BUILDING SPECIFICATIONS
CURTAIN	3 LAYER PVC COATED POLYESTER WITH 2 LAYERS POLYESTER WEAVE		
GUIDES	HIGH STRENGTH STEEL		
BOTTOM BAR	EXTRUDED ALUMINUM		

MODEL	STANDARD MAX. VALUES	
	WIDTH	HEIGHT
993	20'	20'

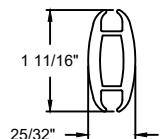
**RAPIDFLEX®**

993 STRUTTED EXTERIOR HIGH SPEED FABRIC DOOR

DWG. NO.	DATE:	<b>The Genuine. The Original.</b> <b>OVERHEAD DOOR</b>
SHEET	BY:	



**BOTTOM BAR DETAIL**

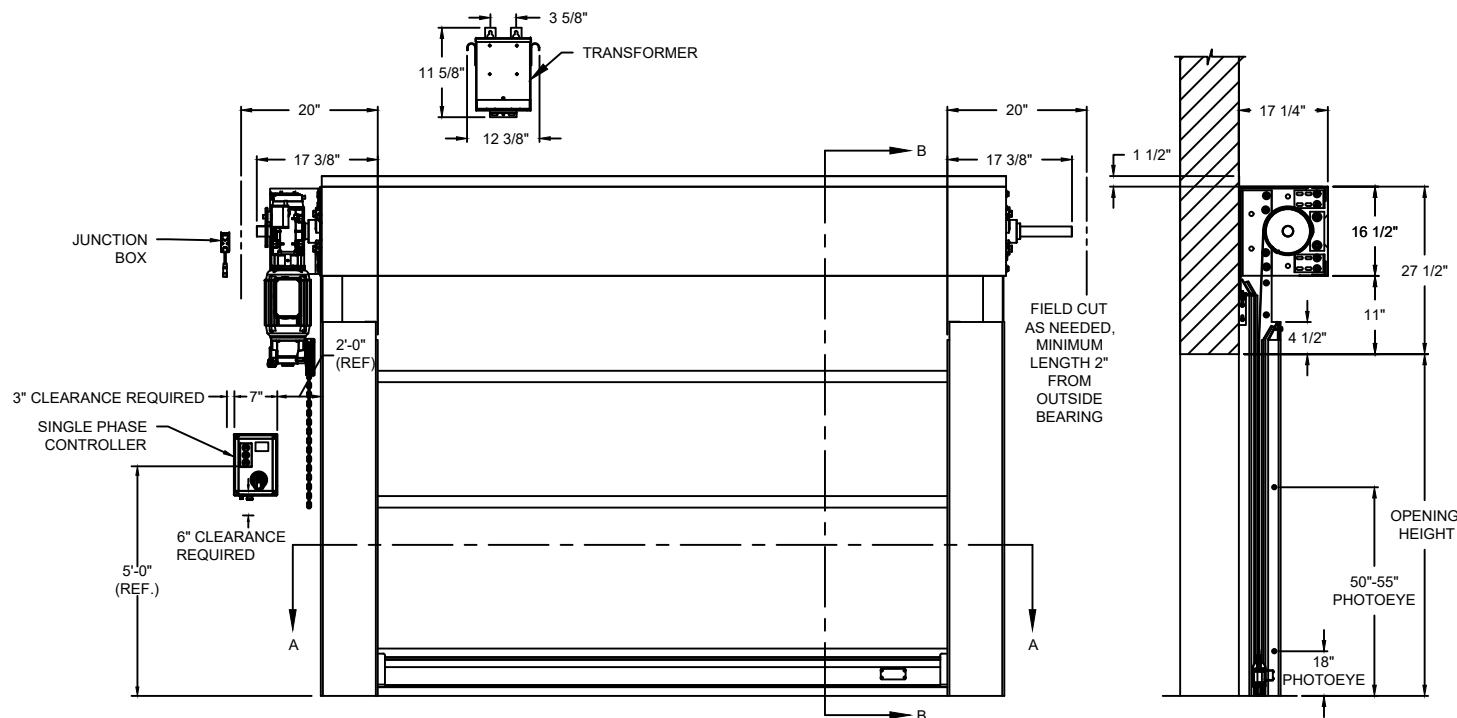


**STRUT DETAIL**

**OPTIONS**

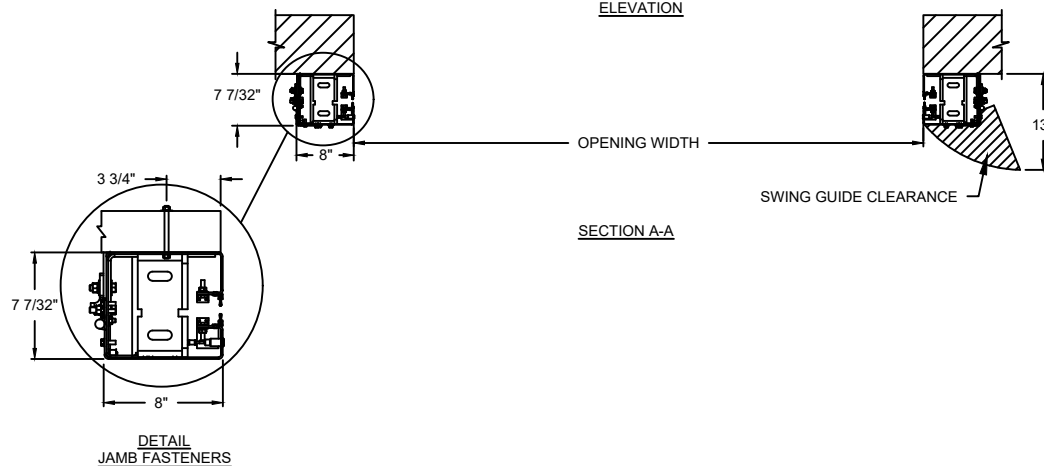
OPENING WIDTH*	
OPENING HEIGHT*	
WINDOW OPTIONS	<input type="checkbox"/> 20" H VISION
HOOD OPTIONS	<input type="checkbox"/> SLOPED <input type="checkbox"/> STANDARD
HOUSING OPTIONS	<input type="checkbox"/> WITH MOTOR HOUSING <input type="checkbox"/> WITHOUT MOTOR HOUSING

MODEL	STANDARD MAX. VALUES	
	WIDTH	HEIGHT
993	20'	20'



**ELEVATION**

**SECTION B-B**



**SECTION A-A**

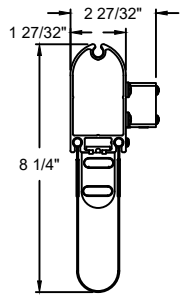
**DETAIL  
JAMB FASTENERS**

COMPONENT	MATERIAL	OPERATION	NOTES:
HOOD	22 GA. STEEL	MOTOR LH 208V 1-PHASE VIA TRANSFORMER (190-270V RANGE)	1. WINDLOAD 19 P.S.F ULTIMATE @ 20' WIDE * PLEASE REFER TO WALL GUIDE FOR COMPLETE LIST OF BUILDING SPECIFICATIONS
CURTAIN	3 LAYER PVC COATED POLYESTER WITH 2 LAYERS POLYESTER WEAVE		
GUIDES	HIGH STRENGTH STEEL		
BOTTOM BAR	EXTRUDED ALUMINUM		

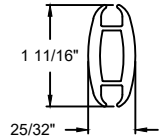
**RAPIDFLEX®**

993 STRUTTED EXTERIOR HIGH SPEED FABRIC DOOR

DWG. NO.	DATE:	<b>The Genuine. The Original.</b> <b>OVERHEAD DOOR</b>
SHEET	BY:	



**BOTTOM BAR DETAIL**

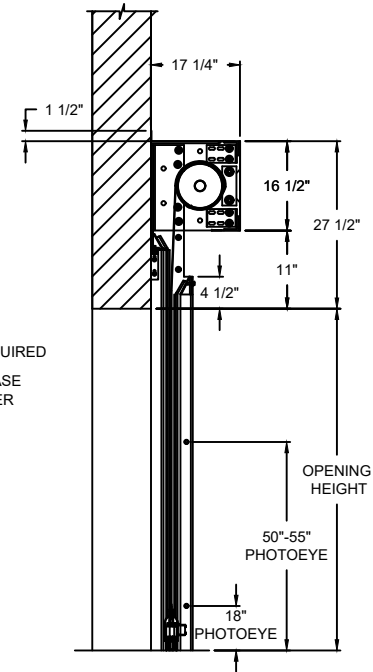
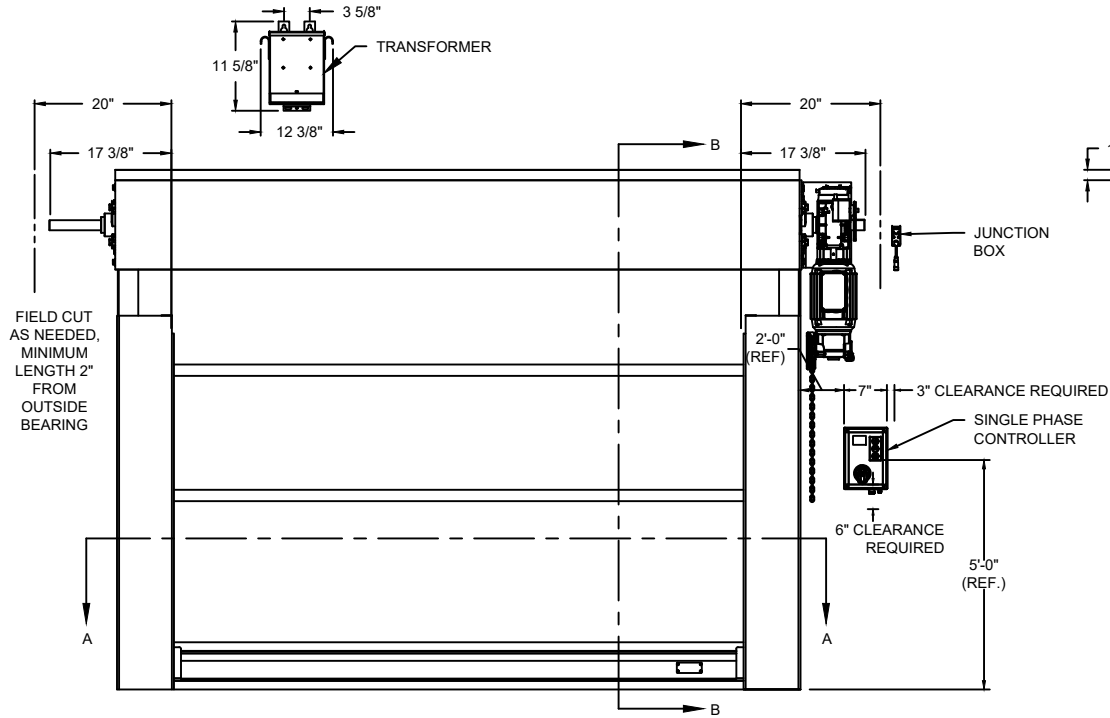


**STRUT DETAIL**

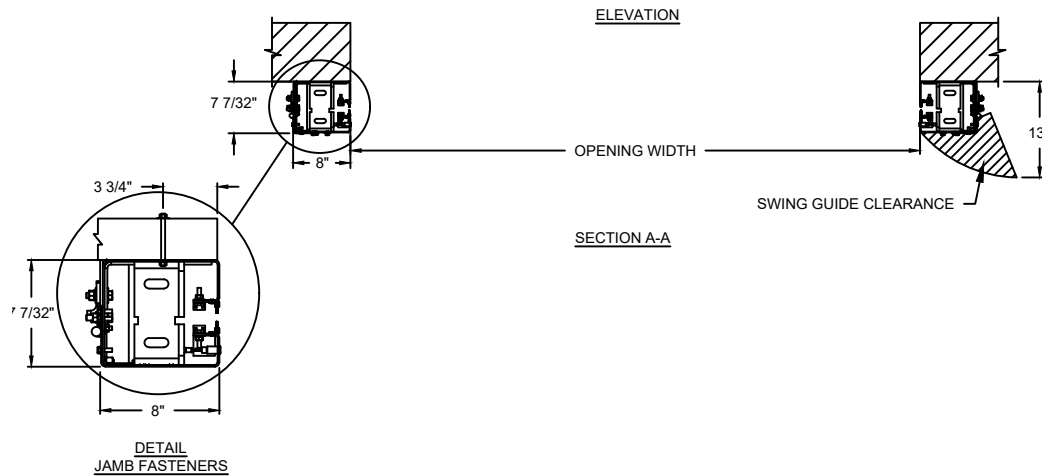
**OPTIONS**

OPENING WIDTH*	
OPENING HEIGHT*	
WINDOW OPTIONS	<input type="checkbox"/> 20" H VISION
HOOD OPTIONS	<input type="checkbox"/> SLOPED <input type="checkbox"/> STANDARD
HOUSING OPTIONS	<input type="checkbox"/> WITH MOTOR HOUSING <input type="checkbox"/> WITHOUT MOTOR HOUSING

MODEL	STANDARD MAX. VALUES	
	WIDTH	HEIGHT
993	20'	20'



**SECTION B-B**



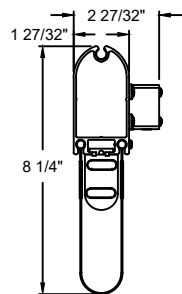
**DETAIL  
JAMB FASTENERS**

COMPONENT	MATERIAL	OPERATION	NOTES:
HOOD	22 GA. STEEL	MOTOR RH 208V 1-PHASE VIA TRANSFORMER (190-270V RANGE)	1. WINDLOAD 19 P.S.F ULTIMATE @ 20' WIDE * PLEASE REFER TO WALL GUIDE FOR COMPLETE LIST OF BUILDING SPECIFICATIONS
CURTAIN	3 LAYER PVC COATED POLYESTER WITH 2 LAYERS POLYESTER WEAVE		
GUIDES	HIGH STRENGTH STEEL		
BOTTOM BAR	EXTRUDED ALUMINUM		

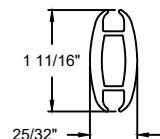
**RAPIDFLEX®**

993 STRUTTED EXTERIOR HIGH SPEED FABRIC DOOR

DWG. NO.	DATE:	<b>The Genuine. The Original.</b> <b>OVERHEAD DOOR</b>
SHEET	BY:	



BOTTOM BAR DETAIL

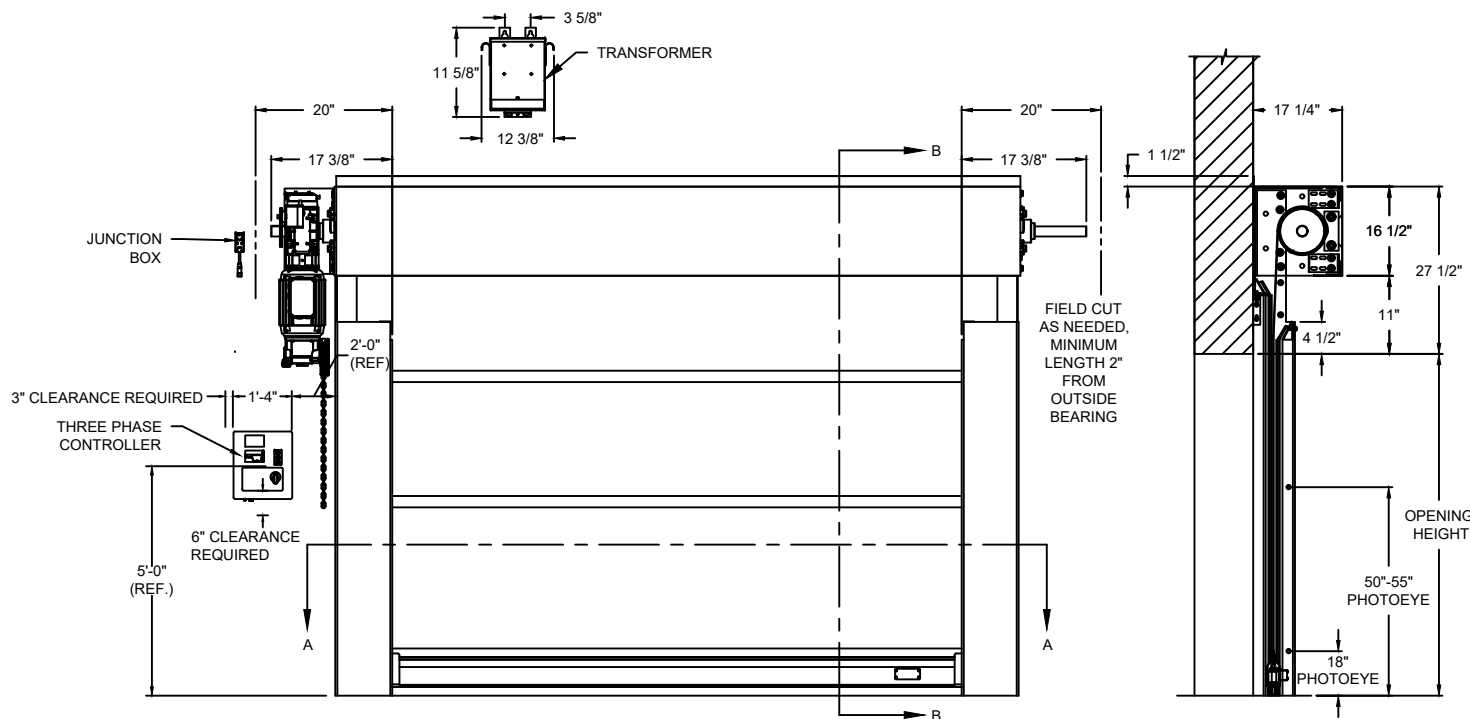


STRUT DETAIL

OPTIONS

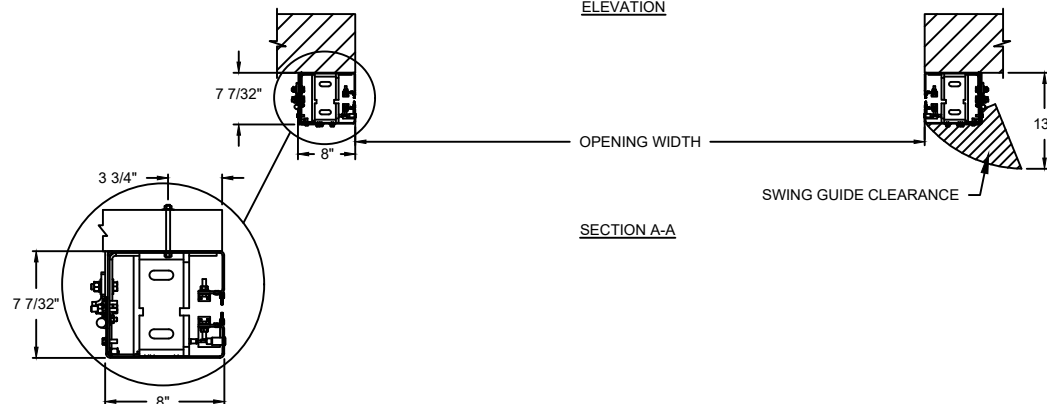
OPENING WIDTH*	
OPENING HEIGHT*	
WINDOW OPTIONS	<input type="checkbox"/> 20" H VISION
HOOD OPTIONS	<input type="checkbox"/> SLOPED <input type="checkbox"/> STANDARD
HOUSING OPTIONS	<input type="checkbox"/> WITH MOTOR HOUSING <input type="checkbox"/> WITHOUT MOTOR HOUSING

MODEL	STANDARD MAX. VALUES	
	WIDTH	HEIGHT
993	20'	20'



ELEVATION

SECTION B-B



SECTION A-A

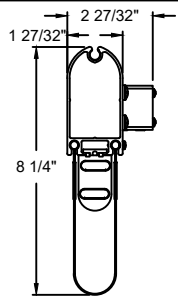
DETAIL  
JAMB FASTENERS

COMPONENT	MATERIAL	OPERATION	NOTES:
HOOD	22 GA. STEEL	MOTOR LH 208V 3-PHASE VIA TRANSFORMER (190-270V RANGE)	1. WINDLOAD 19 P.S.F ULTIMATE @ 20' WIDE * PLEASE REFER TO WALL GUIDE FOR COMPLETE LIST OF BUILDING SPECIFICATIONS
CURTAIN	3 LAYER PVC COATED POLYESTER WITH 2 LAYERS POLYESTER WEAVE		
GUIDES	HIGH STRENGTH STEEL		
BOTTOM BAR	EXTRUDED ALUMINUM		

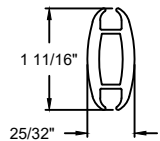
**RAPIDFLEX®**

993 STRUTTED EXTERIOR HIGH SPEED FABRIC DOOR

DWG. NO.	DATE:	The Genuine. The Original. OVERHEAD DOOR
SHEET	BY:	



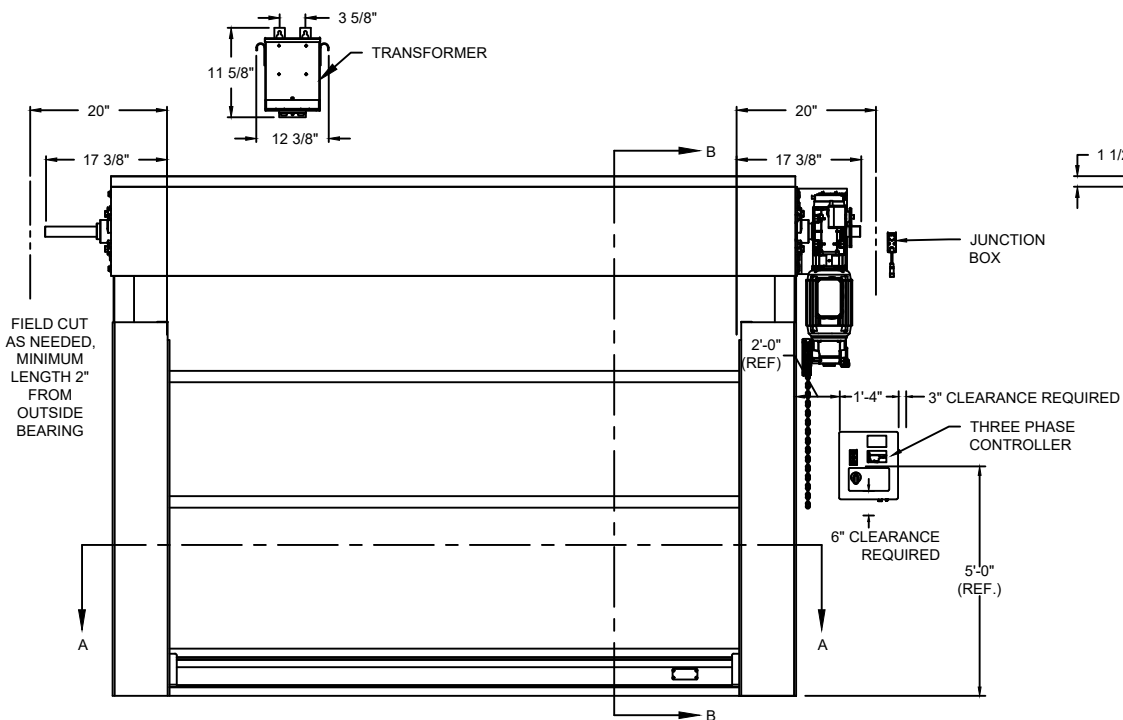
BOTTOM BAR DETAIL



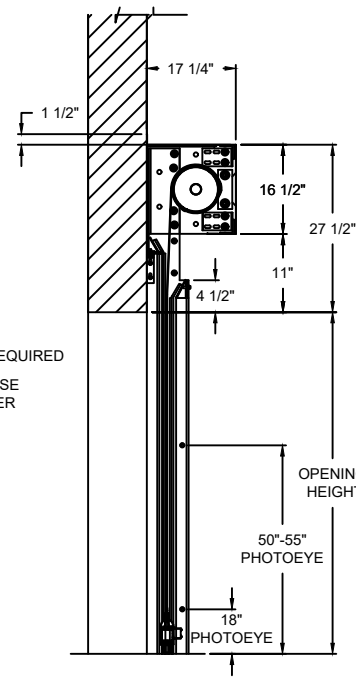
STRUT DETAIL

OPTIONS

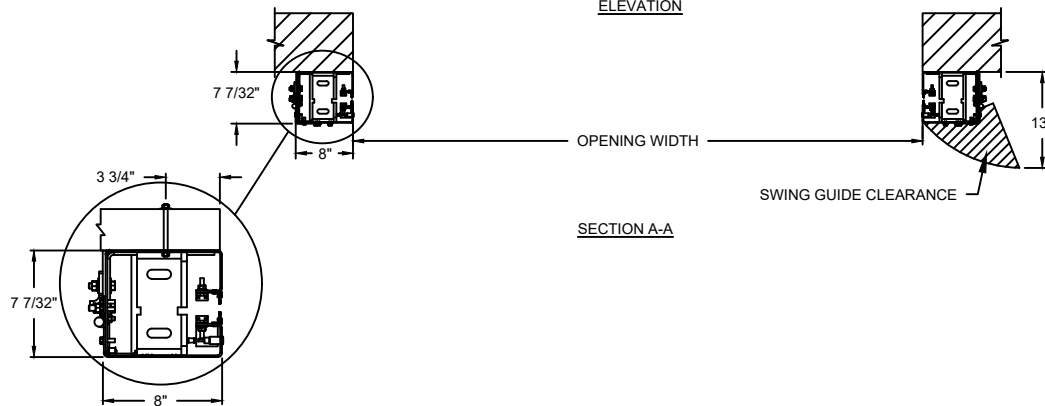
OPENING WIDTH*	
OPENING HEIGHT*	
WINDOW OPTIONS	<input type="checkbox"/> 20" H VISION
HOOD OPTIONS	<input type="checkbox"/> SLOPED <input type="checkbox"/> STANDARD
HOUSING OPTIONS	<input type="checkbox"/> WITH MOTOR HOUSING <input type="checkbox"/> WITHOUT MOTOR HOUSING



ELEVATION



SECTION B-B



SECTION A-A

DETAIL  
JAMB FASTENERS

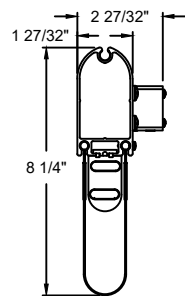
MODEL	STANDARD MAX. VALUES	
	WIDTH	HEIGHT
993	20'	20'

COMPONENT	MATERIAL	OPERATION	NOTES:
HOOD	22 GA. STEEL	MOTOR RH 208V 3-PHASE VIA TRANSFORMER (190-270V RANGE)	1. WINDLOAD 19 P.S.F ULTIMATE @ 20' WIDE * PLEASE REFER TO WALL GUIDE FOR COMPLETE LIST OF BUILDING SPECIFICATIONS
CURTAIN	3 LAYER PVC COATED POLYESTER WITH 2 LAYERS POLYESTER WEAVE		
GUIDES	HIGH STRENGTH STEEL		
BOTTOM BAR	EXTRUDED ALUMINUM		

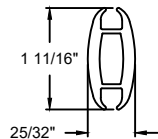
RAPIDFLEX®

993 STRUTTED EXTERIOR HIGH SPEED FABRIC DOOR

DWG. NO.	DATE:	The Genuine. The Original. OVERHEAD DOOR
SHEET	BY:	



BOTTOM BAR DETAIL

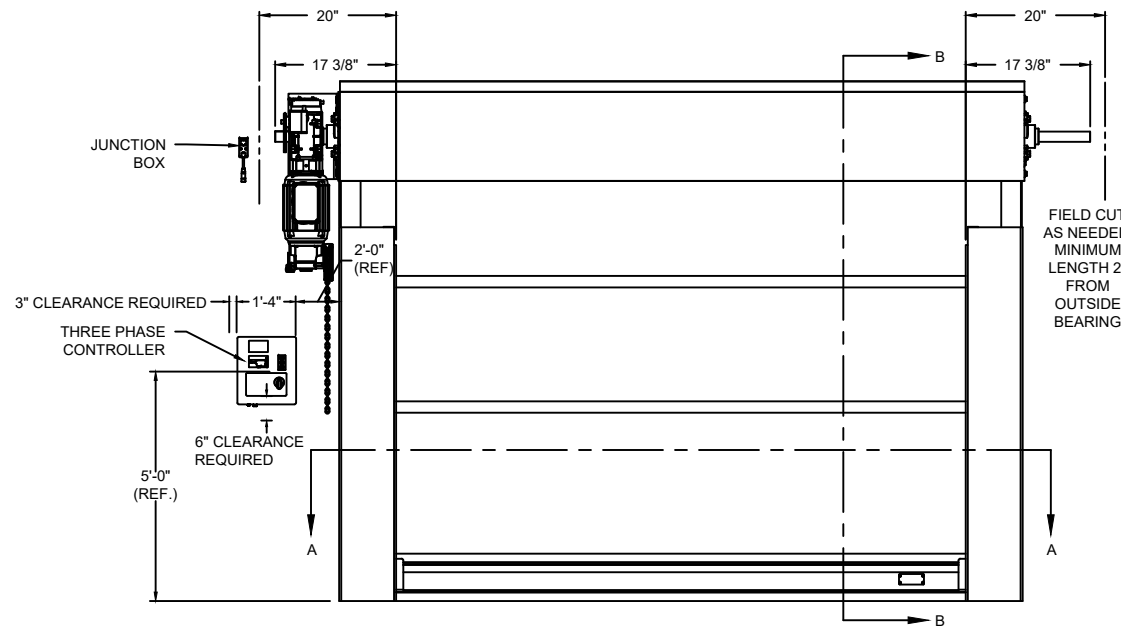


STRUT DETAIL

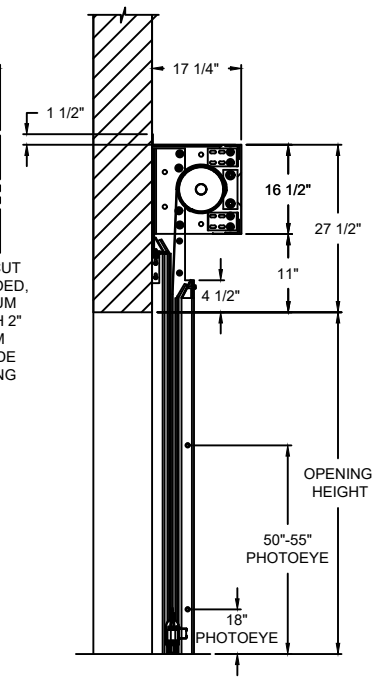
**OPTIONS**

OPENING WIDTH*	
OPENING HEIGHT*	
WINDOW OPTIONS	<input type="checkbox"/> 20" H VISION
VOLTS OPTIONS	<input type="checkbox"/> 230V 3-PHASE <input type="checkbox"/> 460V 3-PHASE
HOOD OPTIONS	<input type="checkbox"/> SLOPED <input type="checkbox"/> STANDARD
HOUSING OPTIONS	<input type="checkbox"/> WITH MOTOR HOUSING <input type="checkbox"/> WITHOUT MOTOR HOUSING

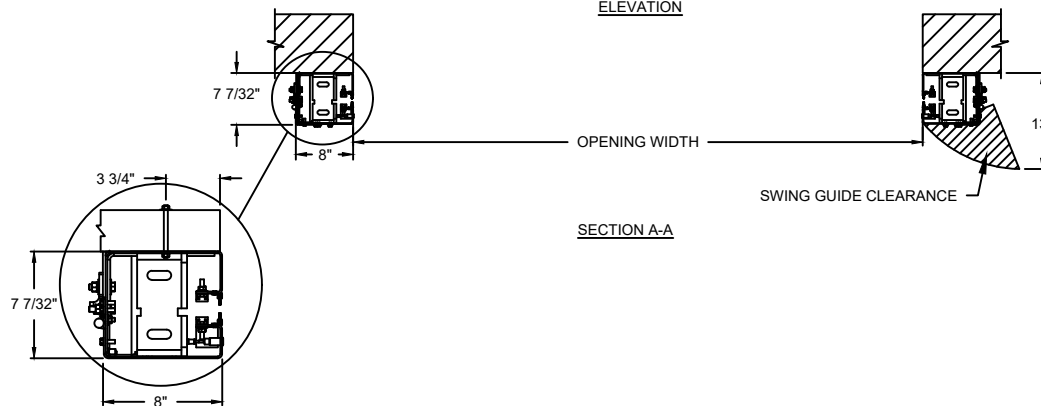
MODEL	STANDARD MAX. VALUES	
	WIDTH	HEIGHT
993	20'	20'



ELEVATION



SECTION B-B



SECTION A-A

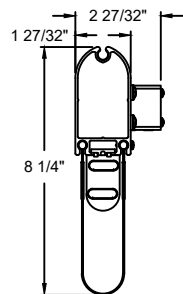
DETAIL  
JAMB FASTENERS

COMPONENT	MATERIAL	OPERATION	NOTES:
HOOD	22 GA. STEEL	MOTOR LH	1. WINDLOAD 19 P.S.F ULTIMATE @ 20' WIDE * PLEASE REFER TO WALL GUIDE FOR COMPLETE LIST OF BUILDING SPECIFICATIONS
CURTAIN	3 LAYER PVC COATED POLYESTER WITH 2 LAYERS POLYESTER WEAVE		
GUIDES	HIGH STRENGTH STEEL		
BOTTOM BAR	EXTRUDED ALUMINUM		

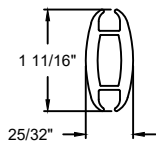
**RAPIDFLEX®**

993 STRUTTED EXTERIOR HIGH SPEED FABRIC DOOR

DWG. NO.	DATE:	<b>The Genuine. The Original.</b> <b>OVERHEAD DOOR</b>
SHEET	BY:	



BOTTOM BAR DETAIL

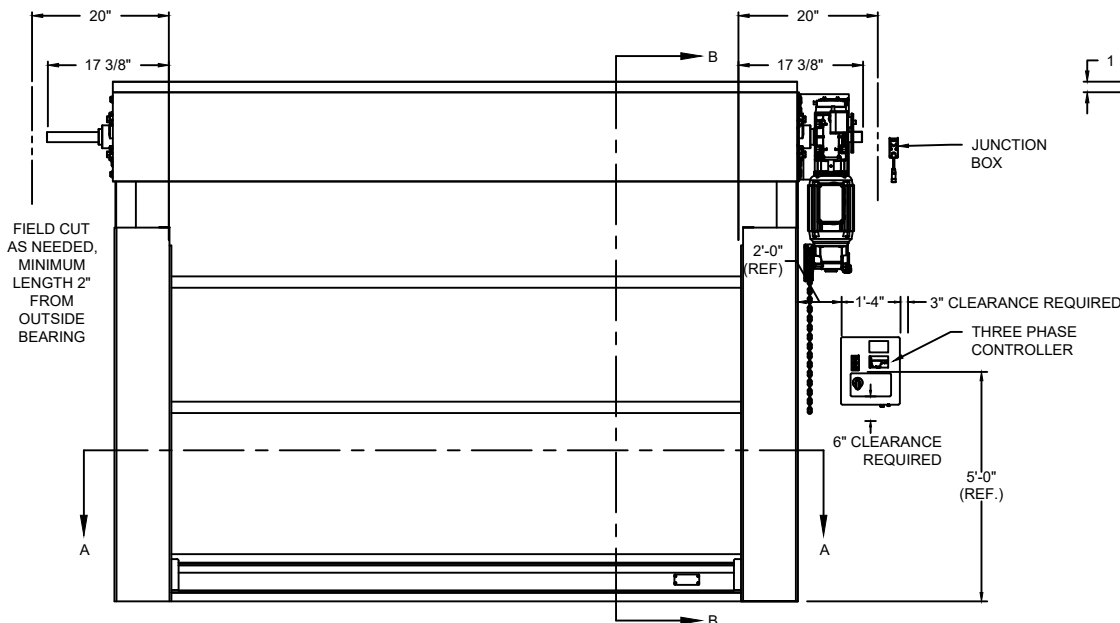


STRUT DETAIL

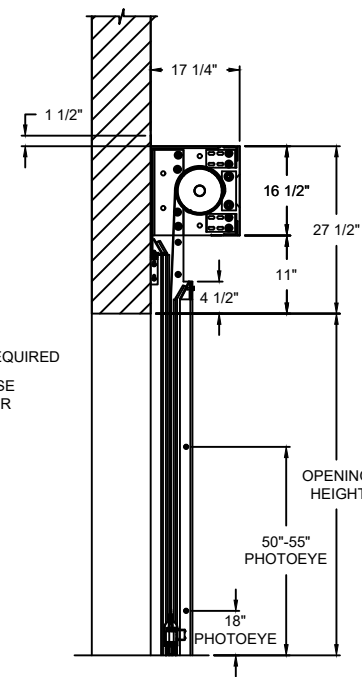
OPTIONS

OPENING WIDTH*	
OPENING HEIGHT*	
WINDOW OPTIONS	<input type="checkbox"/> 20" H VISION
VOLTS OPTIONS	<input type="checkbox"/> 230V 3-PHASE <input type="checkbox"/> 460V 3-PHASE
HOOD OPTIONS	<input type="checkbox"/> SLOPED <input type="checkbox"/> STANDARD
HOUSING OPTIONS	<input type="checkbox"/> WITH MOTOR HOUSING <input type="checkbox"/> WITHOUT MOTOR HOUSING

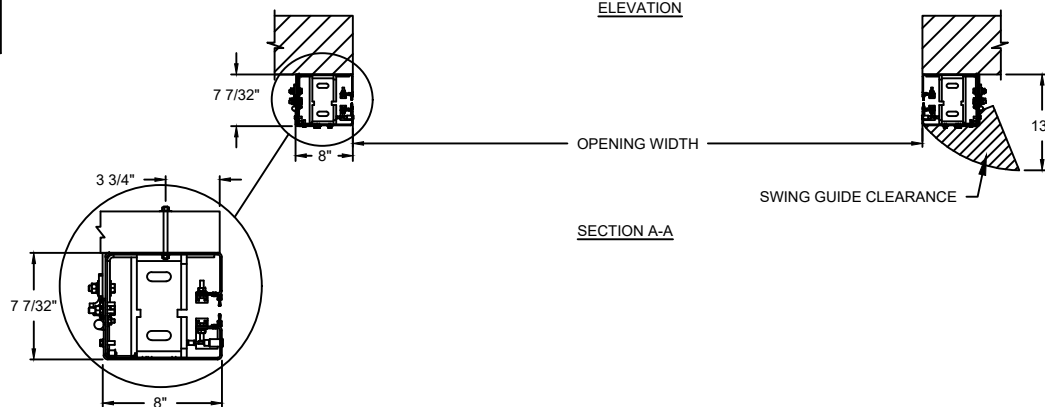
MODEL	STANDARD MAX. VALUES	
	WIDTH	HEIGHT
993	20'	20'



ELEVATION



SECTION B-B



SECTION A-A

DETAIL  
JAMB FASTENERS

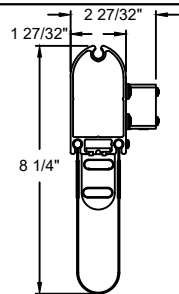
COMPONENT	MATERIAL	OPERATION	NOTES:
HOOD	22 GA. STEEL	MOTOR RH	1. WINDLOAD 19 P.S.F ULTIMATE @ 20' WIDE * PLEASE REFER TO WALL GUIDE FOR COMPLETE LIST OF BUILDING SPECIFICATIONS
CURTAIN	3 LAYER PVC COATED POLYESTER WITH 2 LAYERS POLYESTER WEAVE		
GUIDES	HIGH STRENGTH STEEL		
BOTTOM BAR	EXTRUDED ALUMINUM		

RAPIDFLEX®

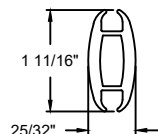
993 STRUTTED EXTERIOR HIGH SPEED FABRIC DOOR

DWG. NO.	DATE:	The Genuine. The Original. OVERHEAD DOOR
SHEET	BY:	





BOTTOM BAR DETAIL

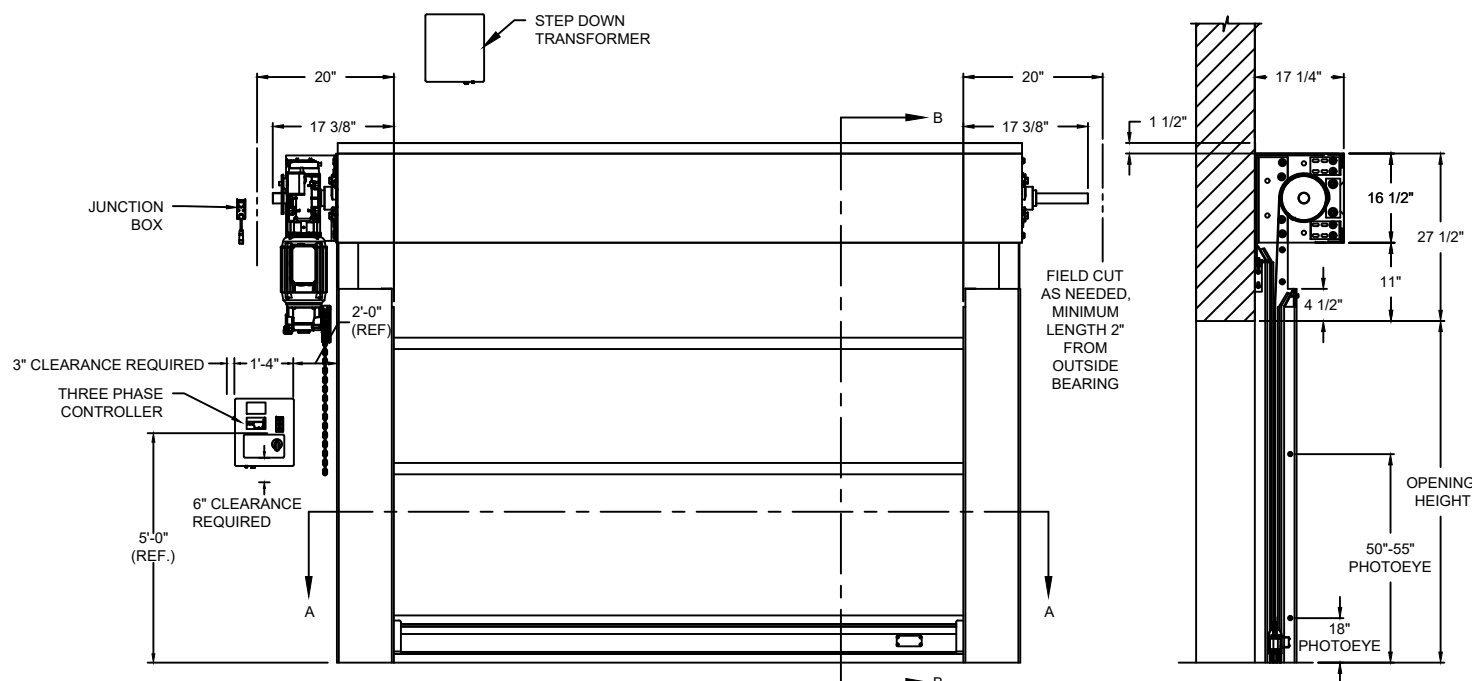


STRUT DETAIL

OPTIONS

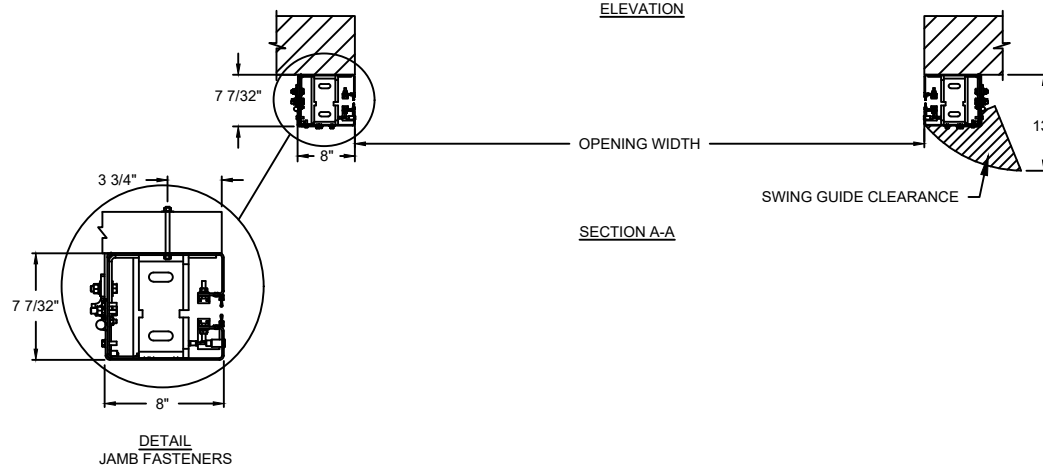
OPENING WIDTH*	
OPENING HEIGHT*	
WINDOW OPTIONS	<input type="checkbox"/> 20" H VISION
HOOD OPTIONS	<input type="checkbox"/> SLOPED <input type="checkbox"/> STANDARD
HOUSING OPTIONS	<input type="checkbox"/> WITH MOTOR HOUSING <input type="checkbox"/> WITHOUT MOTOR HOUSING

MODEL	STANDARD MAX. VALUES	
	WIDTH	HEIGHT
993	20'	20'



ELEVATION

SECTION B-B



OPENING WIDTH

SWING GUIDE CLEARANCE

SECTION A-A

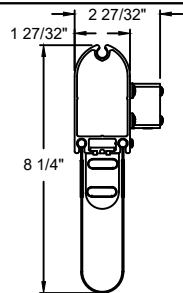
DETAIL  
JAMB FASTENERS

COMPONENT	MATERIAL	OPERATION	NOTES:
HOOD	22 GA. STEEL	MOTOR LH 575V 3-PHASE	1. WINDLOAD 19 P.S.F ULTIMATE @ 20' WIDE * PLEASE REFER TO WALL GUIDE FOR COMPLETE LIST OF BUILDING SPECIFICATIONS
CURTAIN	3 LAYER PVC COATED POLYESTER WITH 2 LAYERS POLYESTER WEAVE		
GUIDES	HIGH STRENGTH STEEL		
BOTTOM BAR	EXTRUDED ALUMINUM		

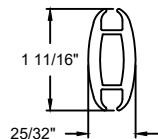
RAPIDFLEX®

993 STRUTTED EXTERIOR HIGH SPEED FABRIC DOOR

DWG. NO.	DATE:	The Genuine. The Original. OVERHEAD DOOR
SHEET	BY:	



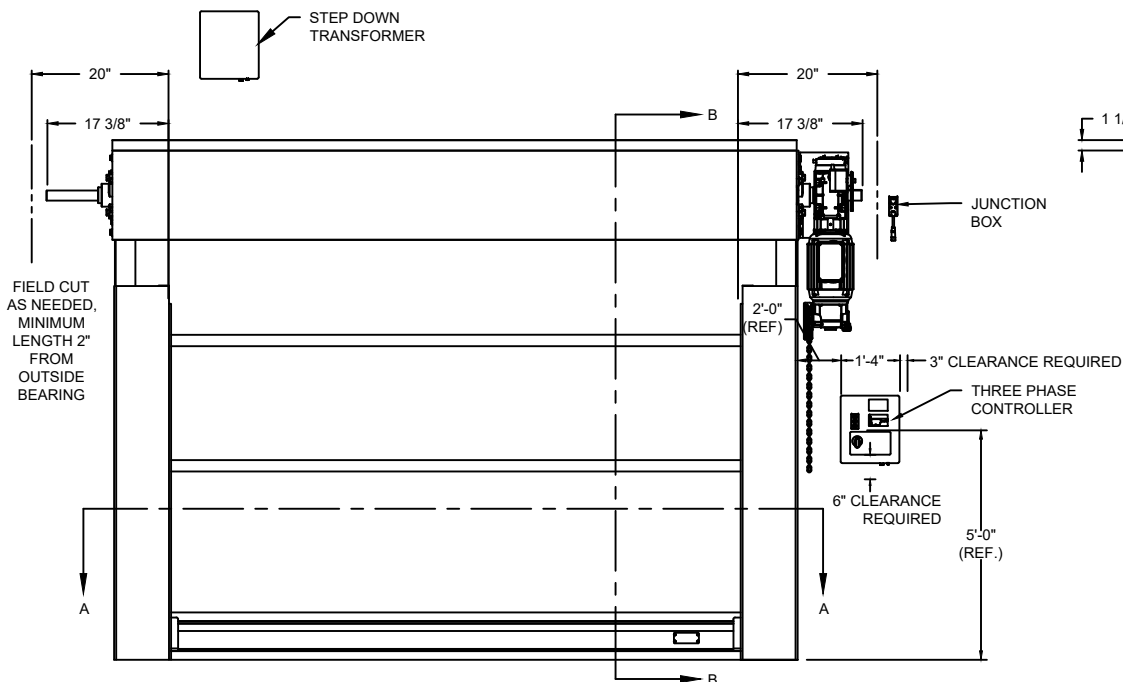
BOTTOM BAR DETAIL



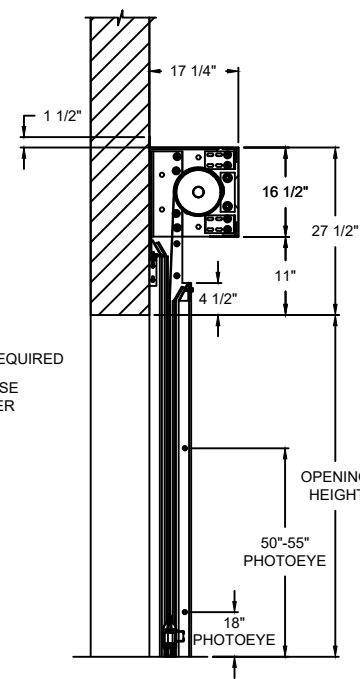
STRUT DETAIL

**OPTIONS**

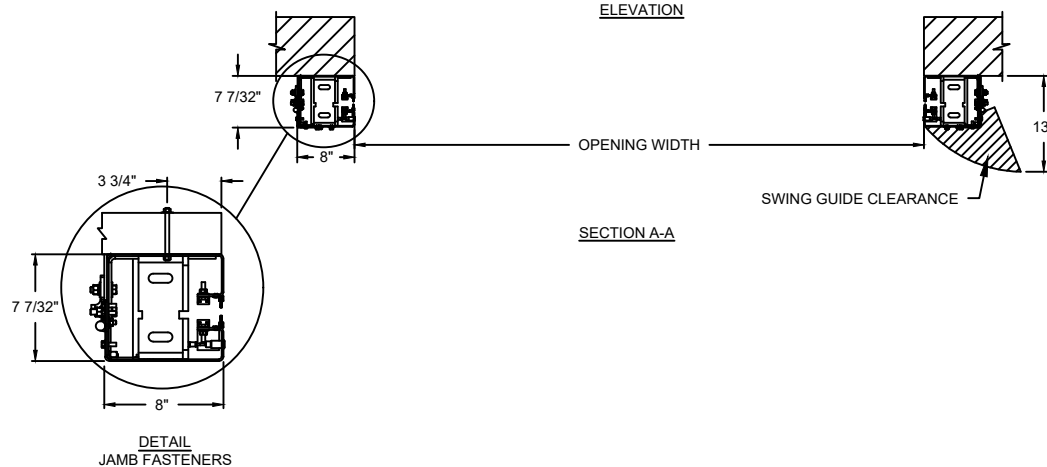
OPENING WIDTH*	
OPENING HEIGHT*	
WINDOW OPTIONS	<input type="checkbox"/> 20" H VISION
HOOD OPTIONS	<input type="checkbox"/> SLOPED <input type="checkbox"/> STANDARD
HOUSING OPTIONS	<input type="checkbox"/> WITH MOTOR HOUSING <input type="checkbox"/> WITHOUT MOTOR HOUSING



ELEVATION



SECTION B-B



SECTION A-A

DETAIL  
JAMB FASTENERS

**RAPIDFLEX®**

993 STRUTTED EXTERIOR HIGH SPEED FABRIC DOOR

DWG. NO.	DATE:	<b>The Genuine. The Original.</b> 
SHEET	BY:	

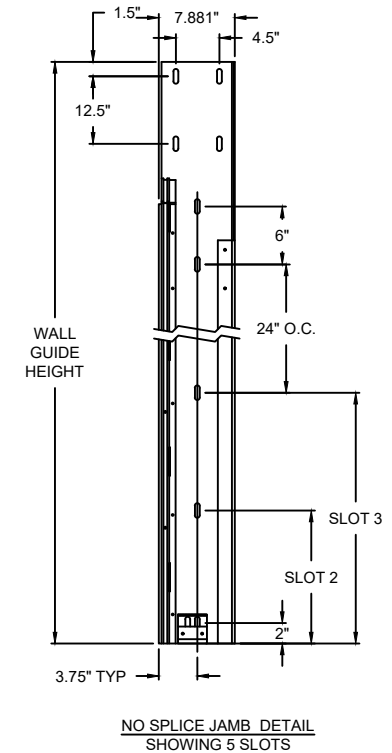
COMPONENT	MATERIAL	OPERATION	NOTES:
HOOD	22 GA. STEEL	MOTOR RH 575V 3-PHASE	1. WINDLOAD 19 P.S.F ULTIMATE @ 20' WIDE * PLEASE REFER TO WALL GUIDE FOR COMPLETE LIST OF BUILDING SPECIFICATIONS
CURTAIN	3 LAYER PVC COATED POLYESTER WITH 2 LAYERS POLYESTER WEAVE		
GUIDES	HIGH STRENGTH STEEL		
BOTTOM BAR	EXTRUDED ALUMINUM		

STRUT QUANTITY WILL VARY  
BASED ON DOOR HEIGHT

OPENING HEIGHT	# OF STRUTS
UP TO 7'3"	1
7'4" TO 10'1"	2
10'2" TO 12'11"	3
13'0" TO 15'9"	4
15'10" TO 18'7"	5
18'8" TO 20'0"	6

993 WALL GUIDE																	
BUILD HEIGHT (FT)	BUILD HEIGHT (IN)	WALL GUIDE HEIGHT (IN)	NUMBER OF SLOTS	SLOT 1	SLOT 2	SLOT 3	SLOT 4	SLOT 5	SLOT 6	SLOT 7	SLOT 8	SLOT 9	SLOT 10	SLOT 11	SLOT 12	SLOT 13	SLOT 14
5	60	87	5	2.00	20.00	38.00	62.00	68.00									
5.5	66	93	5	2.00	23.00	44.00	68.00	74.00									
6	72	99	6	2.00	14.00	26.00	50.00	74.00	80.00								
6.5	78	106	6	2.00	17.00	32.00	56.00	80.00	86.00								
7	84	113	6	2.00	20.00	38.00	62.00	86.00	92.00								
7.5	90	118	6	2.00	23.00	44.00	68.00	92.00	98.00								
8	96	123	7	2.00	14.00	26.00	50.00	74.00	98.00	104.00							
8.5	102	129	7	2.00	17.00	32.00	56.00	80.00	104.00	110.00							
9	108	135	7	2.00	20.00	38.00	62.00	86.00	110.00	116.00							
9.5	114	143	7	2.00	23.00	44.00	68.00	92.00	116.00	122.00							
10	120	147	8	2.00	14.00	26.00	50.00	74.00	98.00	122.00	128.00						
10.5	126	153	8	2.00	17.00	32.00	56.00	80.00	104.00	128.00	134.00						
11	132	159	8	2.00	20.00	38.00	62.00	86.00	110.00	134.00	140.00						
11.5	138	165	8	2.00	23.00	44.00	68.00	92.00	116.00	140.00	146.00						
12	144	171	9	2.00	14.00	26.00	50.00	74.00	98.00	122.00	146.00	152.00					
12.5	150	177	9	2.00	17.00	32.00	56.00	80.00	104.00	128.00	152.00	158.00					
13	156	183	9	2.00	20.00	38.00	62.00	86.00	110.00	134.00	158.00	164.00					
13.5	162	189	9	2.00	23.00	44.00	68.00	92.00	116.00	140.00	164.00	170.00					
14	168	195	10	2.00	14.00	26.00	50.00	74.00	98.00	122.00	146.00	170.00	176.00				
14.5	174	201	10	2.00	17.00	32.00	56.00	80.00	104.00	128.00	152.00	176.00	182.00				
15	180	207	10	2.00	20.00	38.00	62.00	86.00	110.00	134.00	158.00	182.00	188.00				
15.5	186	213	10	2.00	23.00	44.00	68.00	92.00	116.00	140.00	164.00	188.00	194.00				
16	192	219	11	2.00	14.00	26.00	50.00	74.00	98.00	122.00	146.00	170.00	194.00	200.00			
16.5	198	225	11	2.00	17.00	32.00	56.00	80.00	104.00	128.00	152.00	176.00	200.00	206.00			
17	204	231	11	2.00	20.00	38.00	62.00	86.00	110.00	134.00	158.00	182.00	206.00	212.00			
17.5	210	237	13	2.00	15.75	29.50	53.50	77.50	101.50	125.50	131.50	147.75	164.00	188.00		212.00	218.00
18	216	243	13	2.00	18.75	35.50	59.50	83.50	107.50	131.50	137.50	153.75	170.00	194.00	218.00	224.00	
18.5	222	249	13	2.00	21.75	41.50	65.50	89.50	113.50	137.50	143.50	159.75	176.00	200.00	224.00	230.00	
19	228	255	13	2.00	24.75	47.50	71.50	95.50	119.50	143.50	149.50	165.75	182.00	206.00	230.00	236.00	
19.5	234	261	14	2.00	15.75	29.50	53.50	77.50	101.50	125.50	149.50	155.50	171.75	188.00	212.00	236.00	242.00
20	240	267	14	2.00	18.75	35.50	59.50	83.50	107.50	131.50	155.50	161.50	177.75	194.00	218.00	242.00	248.00

NOTE: DOOR HEIGHTS FROM 5'0" TO 17'0" ARE NON-SPLICED.  
NOTE: DOOR HEIGHTS FROM 17'5" TO 20'0" ARE SPLICED.



**RAPIDFLEX®**

993 STRUTTED EXTERIOR HIGH SPEED FABRIC DOOR

DWG. NO.	DATE:	The Genuine. The Original. <b>OVERHEAD DOOR</b>
SHEET	BY:	