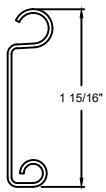
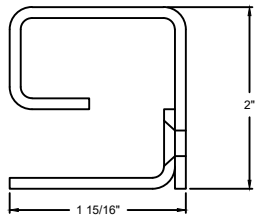


MODEL	STANDARD MAX. VALUES	
	WIDTH	HEIGHT
650	20'	9'



F158 SLAT SECTION



GUIDE DETAIL

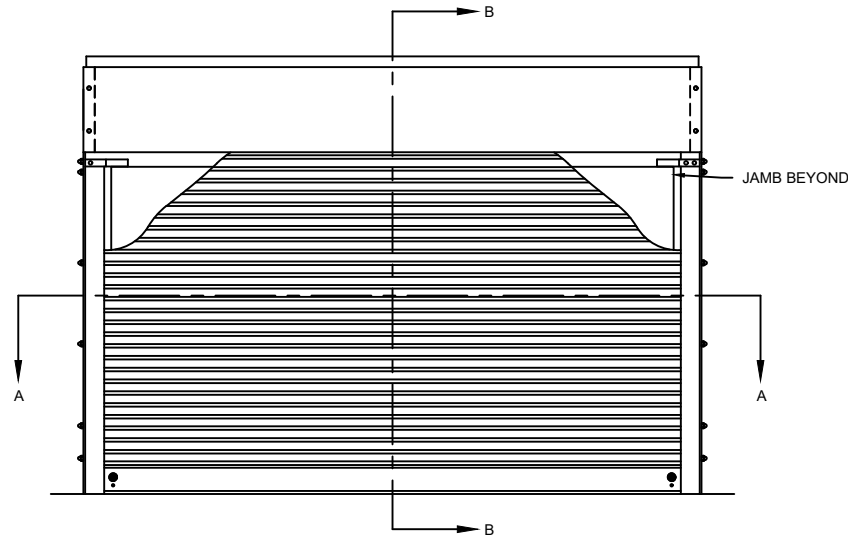
OPTIONS

OPENING WIDTH

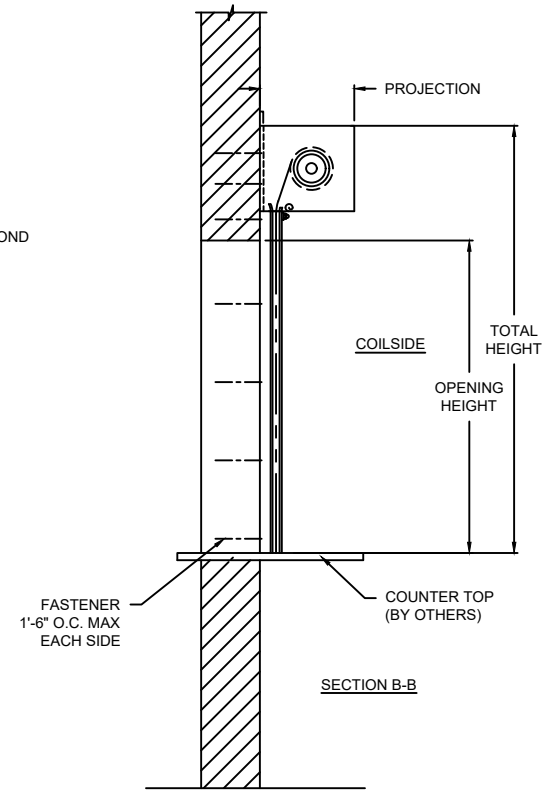
OPENING HEIGHT

LOCK OPTIONS

- CREMONE CYLINDER
- SLIDE BOLTS
- LOCK MORTISE
- LOCK T HANDLE
- THUMB OPTION



ELEVATION



SECTION B-B



SECTION A-A

SETBACK ON STEEL GUIDES MOUNTED TO STEEL JAMBS WILL BE 1/4" ALL OTHER MOUNTING SURFACES WILL BE 15/16" AS SHOWN

COILSIDE

PROJECTION	
MIN.	MAX.
9.5" X 9.5"	11.5" X 11.5"

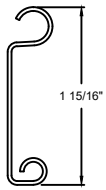
COUNTER DOORS

650 ROLLING COUNTER DOORS - FACE MOUNT

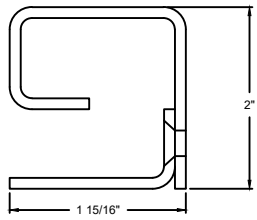
DWG. NO.	DATE:	The Genuine. The Original.
SHEET	BY:	

COMPONENT	MATERIAL	OPERATION	NOTES:
HOOD	24 GA. GALVANIZED STEEL	MANUAL PUSH UP	- WARRANTY: 24-MONTH LIMITED
CURTAIN	22 GA. GALVANIZED STEEL		
GUIDES	STEEL		
FINISH	PRIMED POLYESTER TOP COAT		

MODEL	STANDARD MAX. VALUES	
	WIDTH	HEIGHT
650	20'	9'



F158 SLAT SECTION



GUIDE DETAIL

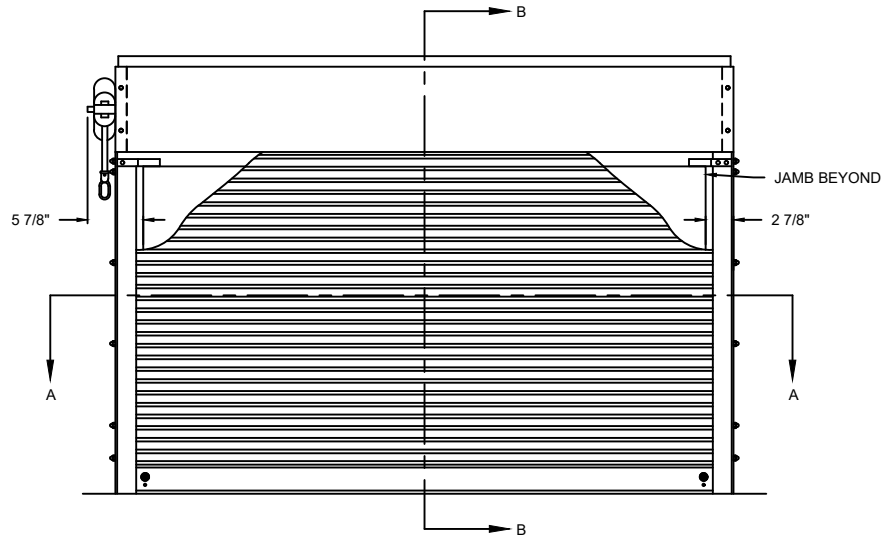
OPTIONS

OPENING WIDTH

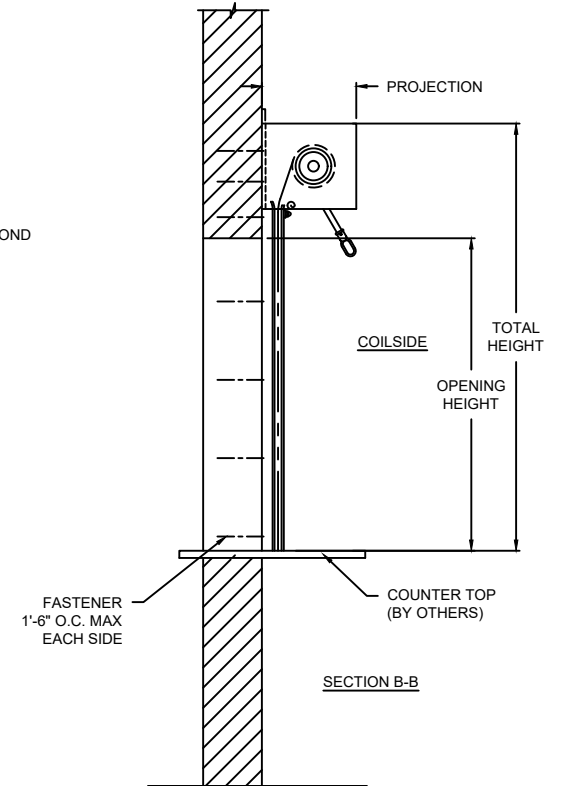
OPENING HEIGHT

LOCK OPTIONS

- CREMONE CYLINDER
- SLIDE BOLTS
- LOCK MORTISE
- LOCK T HANDLE
- THUMB OPTION



ELEVATION



SECTION B-B

PROJECTION	
MIN.	MAX.
9.5" X 9.5"	11.5" X 11.5"



SECTION A-A

SETBACK ON STEEL GUIDES MOUNTED TO STEEL JAMBS WILL BE 1/4" ALL OTHER MOUNTING SURFACES WILL BE 15/16" AS SHOWN

COILSIDE

SECTION A-A

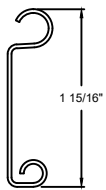
COUNTER DOORS

650 ROLLING COUNTER DOORS - FACE MOUNT

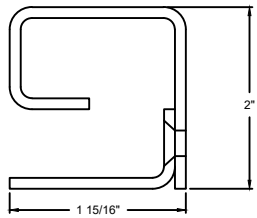
DWG. NO.	DATE:	The Genuine. The Original.
SHEET	BY:	

COMPONENT	MATERIAL	OPERATION	NOTES:
HOOD	24 GA. GALVANIZED STEEL	CRANK LH	- WARRANTY: 24-MONTH LIMITED
CURTAIN	22 GA. GALVANIZED STEEL		
GUIDES	STEEL		
FINISH	PRIMED POLYESTER TOP COAT		

MODEL	STANDARD MAX. VALUES	
	WIDTH	HEIGHT
650	20'	9'



F158 SLAT SECTION



GUIDE DETAIL

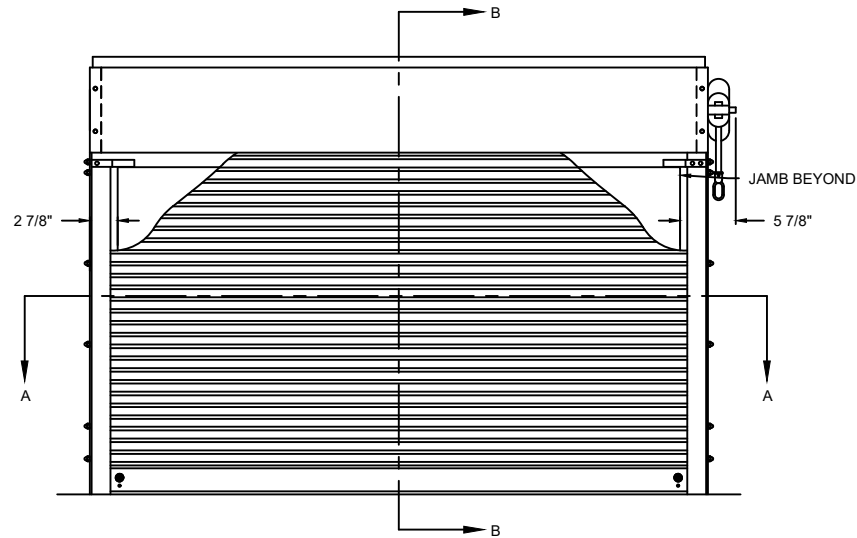
OPTIONS

OPENING WIDTH

OPENING HEIGHT

LOCK OPTIONS

- CREMONE CYLINDER
- SLIDE BOLTS
- LOCK MORTISE
- LOCK T HANDLE
- THUMB OPTION



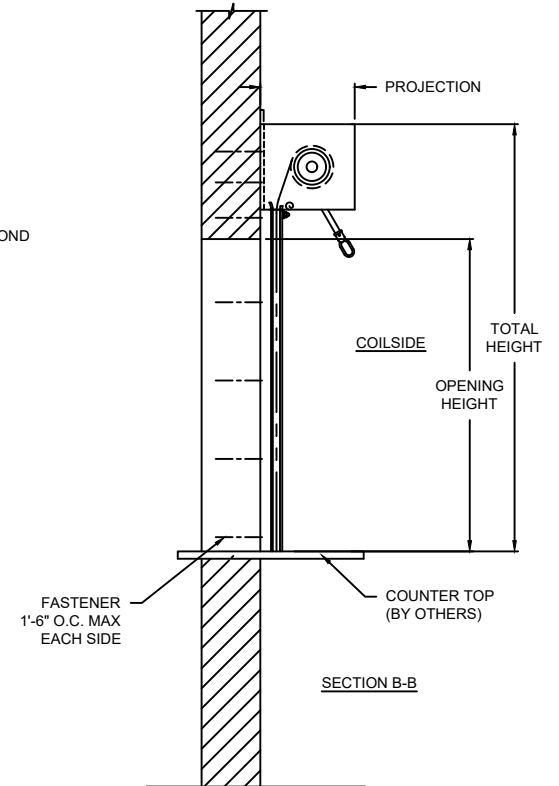
ELEVATION



SETBACK ON STEEL GUIDES MOUNTED TO STEEL JAMBS WILL BE 1/4" ALL OTHER MOUNTING SURFACES WILL BE 15/16" AS SHOWN

COILSIDE

SECTION A-A



SECTION B-B

PROJECTION	
MIN.	MAX.
9.5" X 9.5"	11.5" X 11.5"

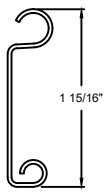
COMPONENT	MATERIAL	OPERATION	NOTES:
HOOD	24 GA. GALVANIZED STEEL	CRANK RH	- WARRANTY: 24-MONTH LIMITED
CURTAIN	22 GA. GALVANIZED STEEL		
GUIDES	STEEL		
FINISH	PRIMED POLYESTER TOP COAT		

COUNTER DOORS

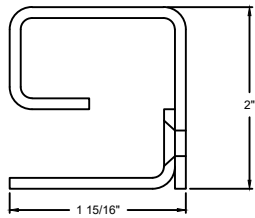
650 ROLLING COUNTER DOORS- FACE MOUNT

DWG. NO.	DATE:	The Genuine. The Original.
SHEET	BY:	

MODEL	STANDARD MAX. VALUES	
	WIDTH	HEIGHT
650	20'	9'



F158 SLAT SECTION



GUIDE DETAIL

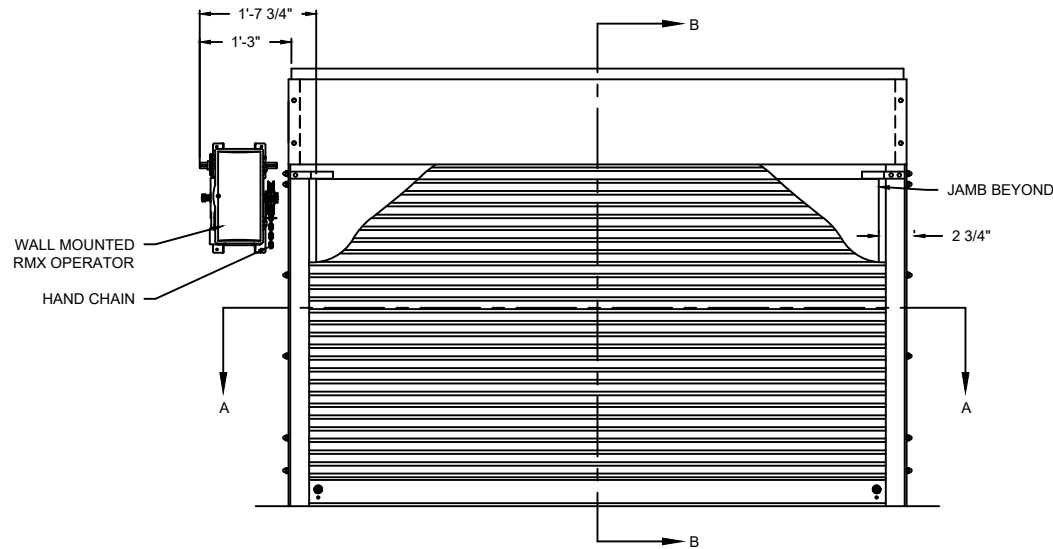
OPTIONS

OPENING WIDTH

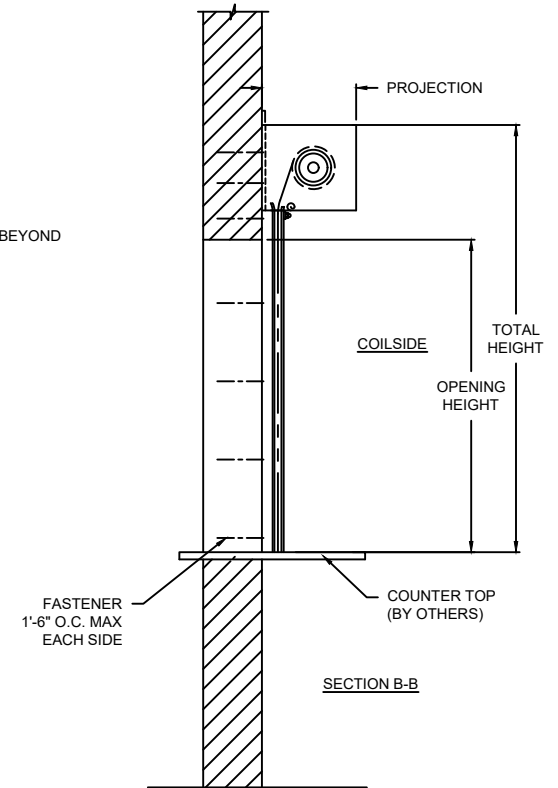
OPENING HEIGHT

LOCK OPTIONS

- CREMONE CYLINDER
- SLIDE BOLTS
- LOCK MORTISE
- LOCK T HANDLE
- THUMB OPTION



ELEVATION



SECTION B-B

PROJECTION	
MIN.	MAX.
9.5" X 9.5"	11.5" X 11.5"



SECTION A-A

SETBACK ON STEEL GUIDES MOUNTED TO STEEL JAMBS WILL BE 1/4" ALL OTHER MOUNTING SURFACES WILL BE 15/16" AS SHOWN

COILSIDE

SECTION A-A

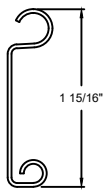
COUNTER DOORS

650 ROLLING COUNTER DOORS - FACE MOUNT

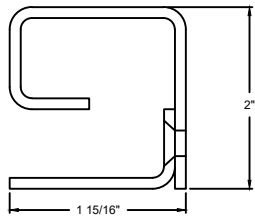
DWG. NO.	DATE:	The Genuine. The Original.
SHEET	BY:	

COMPONENT	MATERIAL	OPERATION	NOTES:
HOOD	24 GA. GALVANIZED STEEL	RMX OPERATOR LH	- WARRANTY: 24-MONTH LIMITED
CURTAIN	22 GA. GALVANIZED STEEL		
GUIDES	STEEL		
FINISH	PRIMED POLYESTER TOP COAT		

MODEL	STANDARD MAX. VALUES	
	WIDTH	HEIGHT
650	20'	9'



F158 SLAT SECTION



GUIDE DETAIL

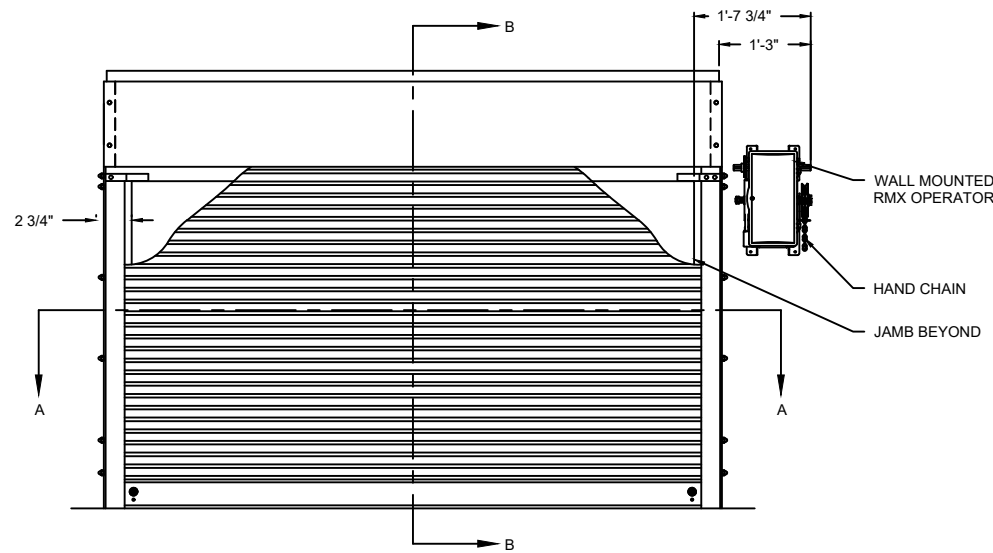
OPTIONS

OPENING WIDTH

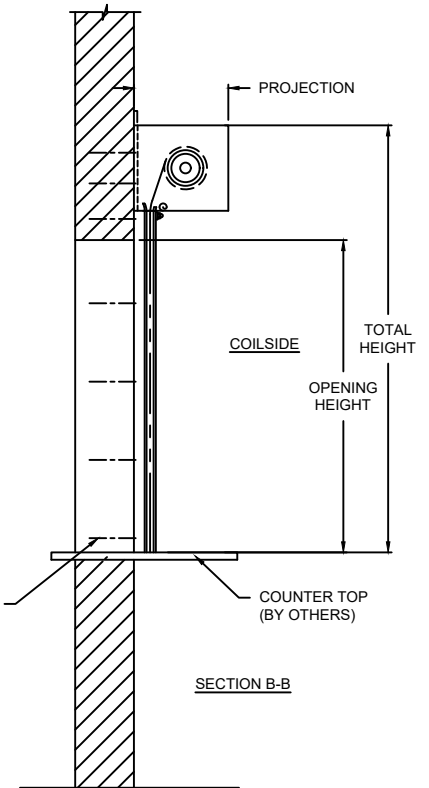
OPENING HEIGHT

LOCK OPTIONS

- CREMONE CYLINDER
- SLIDE BOLTS
- LOCK MORTISE
- LOCK T HANDLE
- THUMB OPTION



ELEVATION



SECTION B-B



SETBACK ON STEEL GUIDES MOUNTED TO STEEL JAMBS WILL BE 1/4" ALL OTHER MOUNTING SURFACES WILL BE 15/16" AS SHOWN

COILSIDE

SECTION A-A

PROJECTION	
MIN.	MAX.
9.5" X 9.5"	11.5" X 11.5"

COUNTER DOORS

650 ROLLING COUNTER DOORS - FACE MOUNT

DWG. NO.	DATE:	The Genuine. The Original.
SHEET	BY:	

COMPONENT	MATERIAL	OPERATION	NOTES:
HOOD	24 GA. GALVANIZED STEEL	RMX OPERATOR RH	- WARRANTY: 24-MONTH LIMITED
CURTAIN	22 GA. GALVANIZED STEEL		
GUIDES	STEEL		
FINISH	PRIMED POLYESTER TOP COAT		