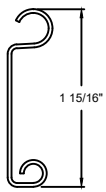
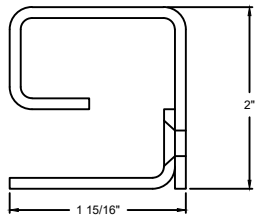


MODEL	STANDARD MAX. VALUES	
	WIDTH	HEIGHT
650	20'	9'



F158 SLAT SECTION



GUIDE DETAIL

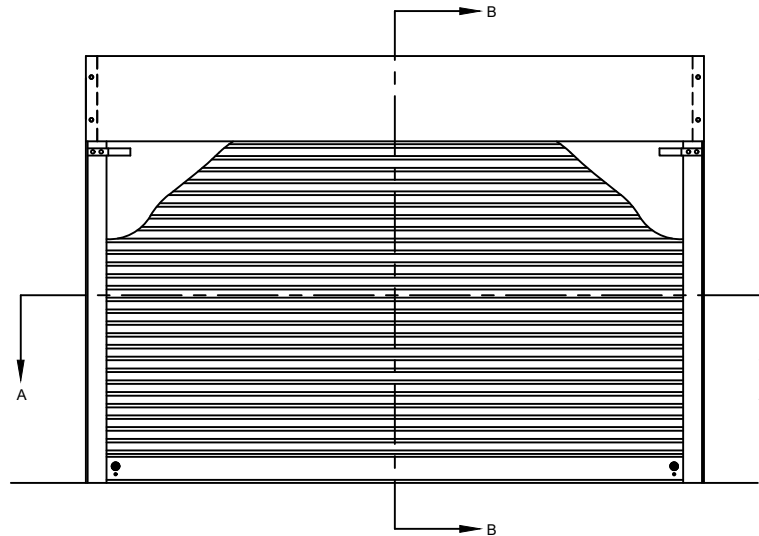
**OPTIONS**

OPENING WIDTH

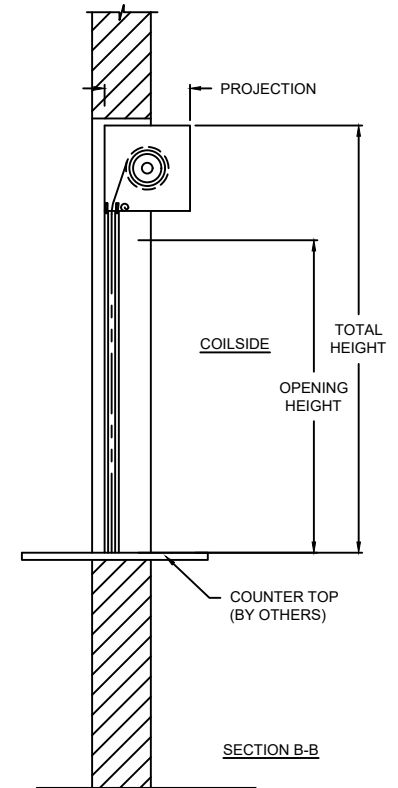
OPENING HEIGHT

LOCK OPTIONS

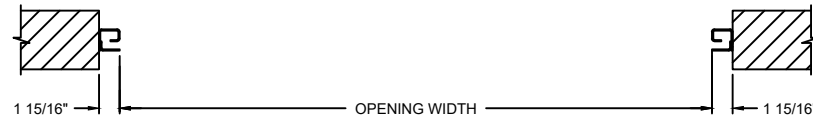
- CREMONE CYLINDER
- SLIDE BOLTS
- LOCK MORTISE
- LOCK T HANDLE
- THUMB OPTION



ELEVATION



SECTION B-B



COILSIDE

SECTION A-A

PROJECTION	
MIN.	MAX.
9.5" X 9.5"	11.5" X 11.5"

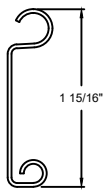
COMPONENT	MATERIAL	OPERATION	NOTES:
HOOD	24 GA. GALVANIZED STEEL	MANUAL PUSH UP	- WARRANTY: 24-MONTH LIMITED
CURTAIN	22 GA. GALVANIZED STEEL		
GUIDES	STEEL		
FINISH	PRIMED POLYESTER TOP COAT		

# COUNTER DOORS

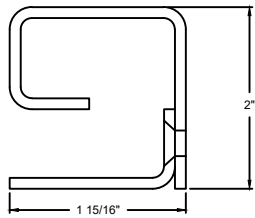
650 ROLLING COUNTER DOORS - BETWEEN JAMBS

DWG. NO.	DATE:	<b>The Genuine. The Original.</b> 
SHEET	BY:	

MODEL	STANDARD MAX. VALUES	
	WIDTH	HEIGHT
650	20'	9'



F158 SLAT SECTION



GUIDE DETAIL

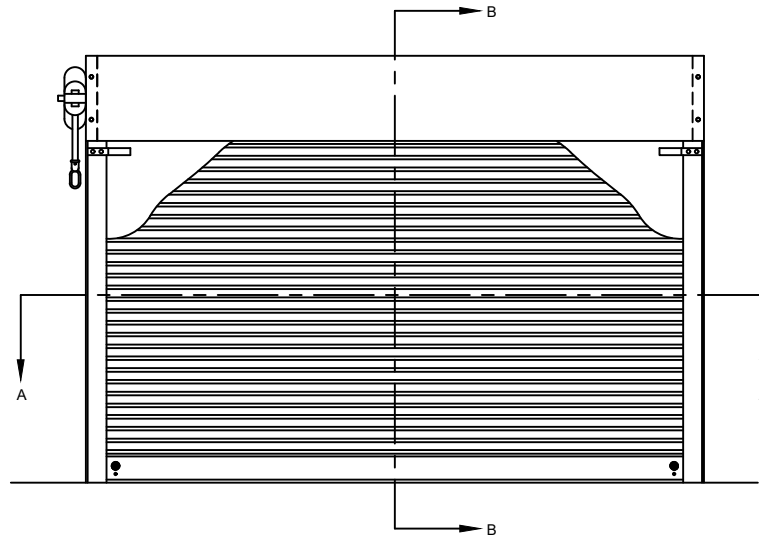
**OPTIONS**

OPENING WIDTH

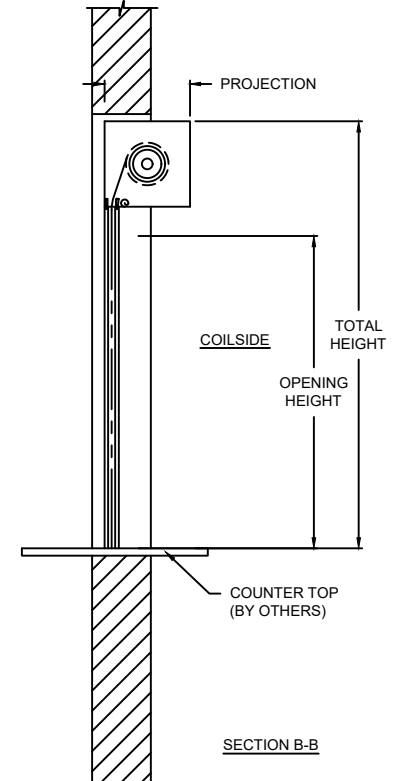
OPENING HEIGHT

LOCK OPTIONS

- CREMONE CYLINDER
- SLIDE BOLTS
- LOCK MORTISE
- LOCK T HANDLE
- THUMB OPTION

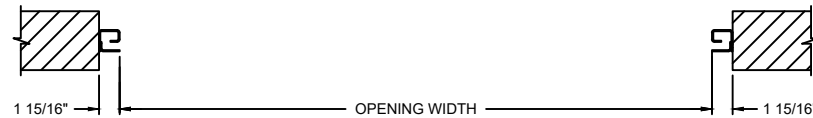


ELEVATION



SECTION B-B

PROJECTION	
MIN.	MAX.
9.5" X 9.5"	11.5" X 11.5"



COILSIDE

SECTION A-A

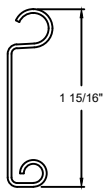
COMPONENT	MATERIAL	OPERATION	NOTES:
HOOD	24 GA. GALVANIZED STEEL	CRANK LH	- WARRANTY: 24-MONTH LIMITED
CURTAIN	22 GA. GALVANIZED STEEL		
GUIDES	STEEL		
FINISH	PRIMED POLYESTER TOP COAT		

# COUNTER DOORS

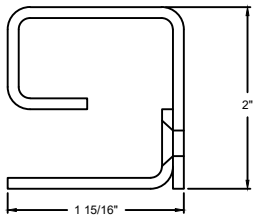
650 ROLLING COUNTER DOORS - BETWEEN JAMBS

DWG. NO.	DATE:	<b>The Genuine. The Original.</b> 
SHEET	BY:	

MODEL	STANDARD MAX. VALUES	
	WIDTH	HEIGHT
650	20'	9'



F158 SLAT SECTION



GUIDE DETAIL

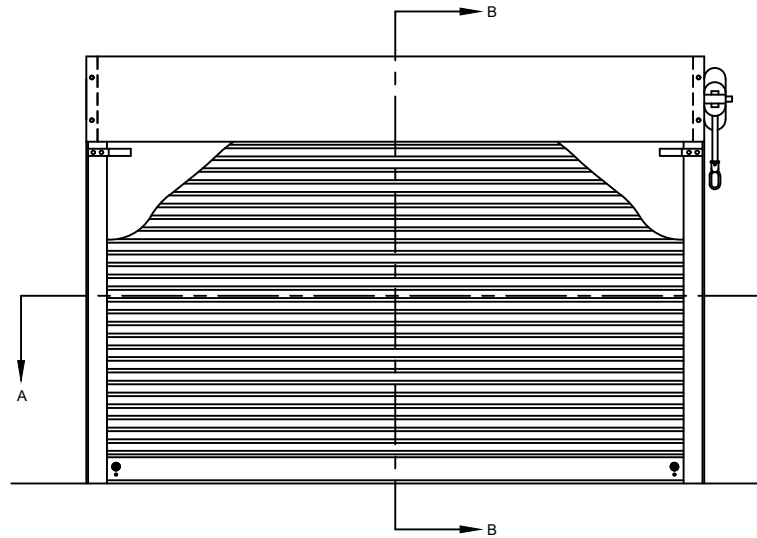
**OPTIONS**

OPENING WIDTH

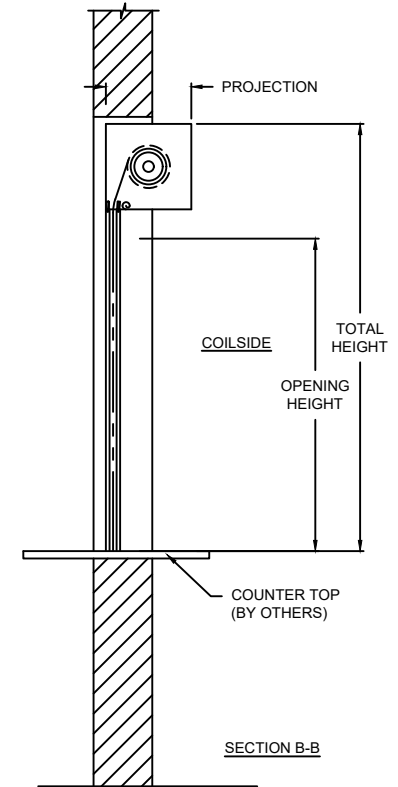
OPENING HEIGHT

LOCK OPTIONS

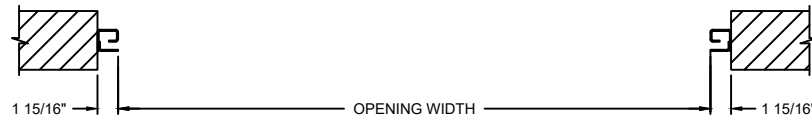
- CREMONE CYLINDER
- SLIDE BOLTS
- LOCK MORTISE
- LOCK T HANDLE
- THUMB OPTION



ELEVATION



PROJECTION	
MIN.	MAX.
9.5" X 9.5"	11.5" X 11.5"



COILSIDE

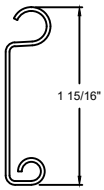
SECTION A-A

# COUNTER DOORS

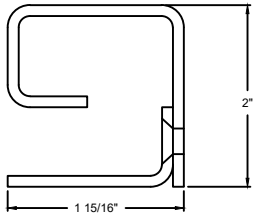
650 ROLLING COUNTER DOORS- BETWEEN JAMBS

DWG. NO.	DATE:	<b>The Genuine. The Original.</b> <b>OVERHEAD DOOR</b>
SHEET	BY:	

COMPONENT	MATERIAL	OPERATION	NOTES:
HOOD	24 GA. GALVANIZED STEEL	CRANK RH	- WARRANTY: 24-MONTH LIMITED
CURTAIN	22 GA. GALVANIZED STEEL		
GUIDES	STEEL		
FINISH	PRIMED POLYESTER TOP COAT		

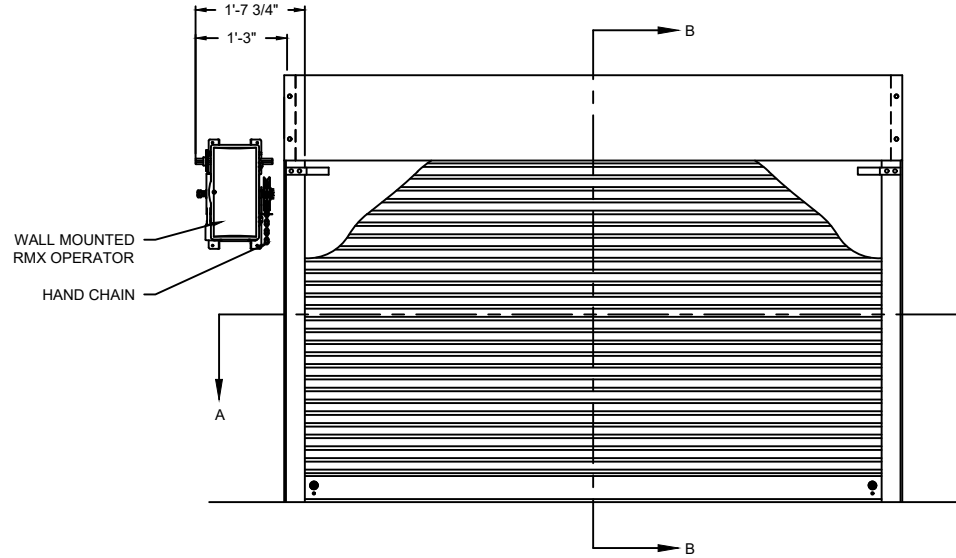


F158 SLAT SECTION

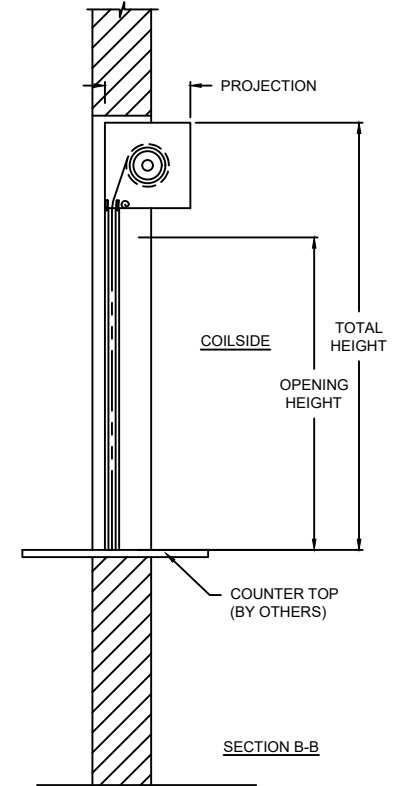


GUIDE DETAIL

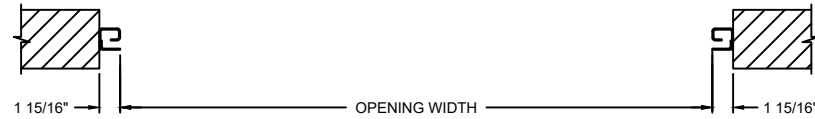
MODEL	STANDARD MAX. VALUES	
	WIDTH	HEIGHT
650	20'	9'



ELEVATION



PROJECTION	
MIN.	MAX.
9.5" X 9.5"	11.5" X 11.5"



COILSIDE

SECTION A-A

OPTIONS	
OPENING WIDTH	
OPENING HEIGHT	
LOCK OPTIONS	<input type="checkbox"/> CREMONE CYLINDER <input type="checkbox"/> SLIDE BOLTS <input type="checkbox"/> LOCK MORTISE <input type="checkbox"/> LOCK T HANDLE <input type="checkbox"/> THUMB OPTION

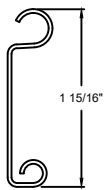
COMPONENT	MATERIAL	OPERATION	NOTES:
HOOD	24 GA. GALVANIZED STEEL	RMX OPERATOR LH	- WARRANTY: 24-MONTH LIMITED
CURTAIN	22 GA. GALVANIZED STEEL		
GUIDES	STEEL		
FINISH	PRIMED POLYESTER TOP COAT		

# COUNTER DOORS

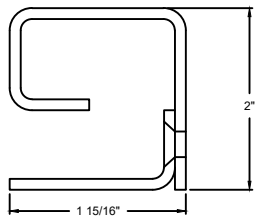
650 ROLLING COUNTER DOORS - BETWEEN JAMBS

DWG. NO.	DATE:	
SHEET	BY:	

MODEL	STANDARD MAX. VALUES	
	WIDTH	HEIGHT
650	20'	9'



F158 SLAT SECTION



GUIDE DETAIL

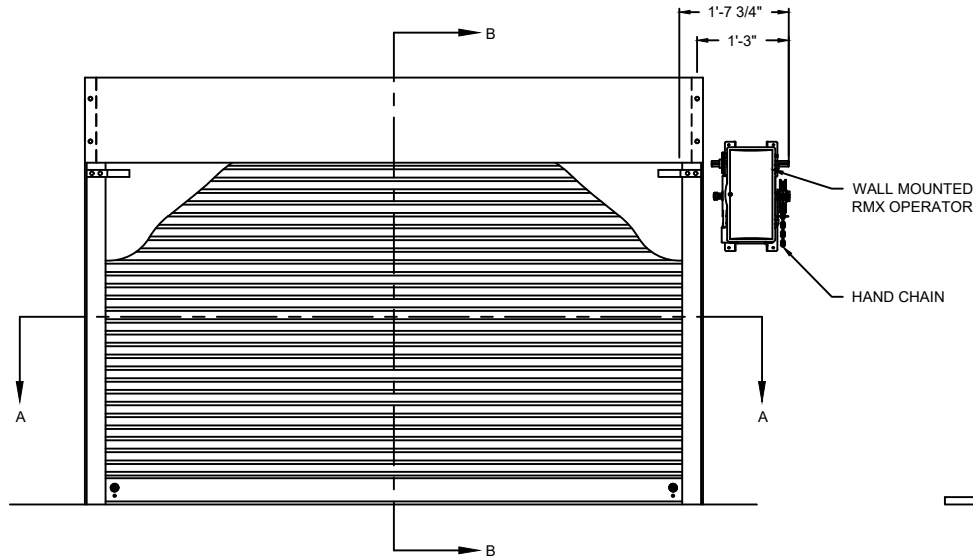
**OPTIONS**

OPENING WIDTH

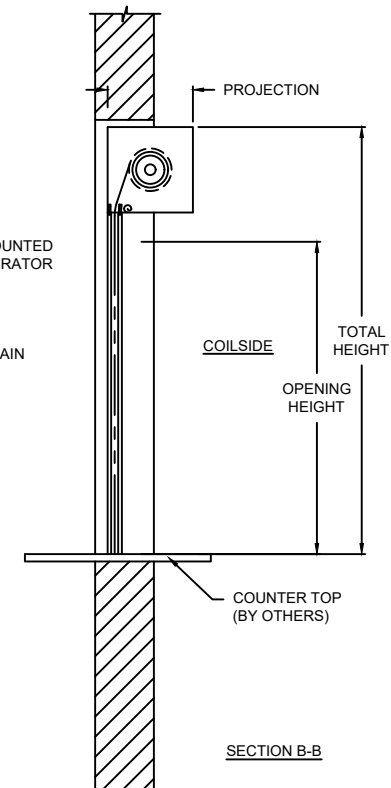
OPENING HEIGHT

LOCK OPTIONS

- CREMONE CYLINDER
- SLIDE BOLTS
- LOCK MORTISE
- LOCK T HANDLE
- THUMB OPTION

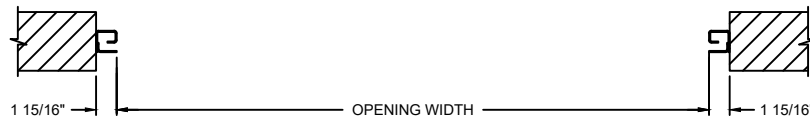


ELEVATION



SECTION B-B

PROJECTION	
MIN.	MAX.
9.5" X 9.5"	11.5" X 11.5"



COILSIDE

SECTION A-A

# COUNTER DOORS

650 ROLLING COUNTER DOORS - BETWEEN JAMBS

DWG. NO.	DATE:	<b>The Genuine. The Original.</b> <i>OVERHEAD DOOR</i>
SHEET	BY:	

COMPONENT	MATERIAL	OPERATION	NOTES:
HOOD	24 GA. GALVANIZED STEEL	RMX OPERATOR RH	- WARRANTY: 24-MONTH LIMITED
CURTAIN	22 GA. GALVANIZED STEEL		
GUIDES	STEEL		
FINISH	PRIMED POLYESTER TOP COAT		