



## SPRINGLESS ALUMINUM FULL VIEW



## MAXIMUM LIGHT INFILTRATION AND SPRINGLESS DESIGN

- Innovative springless design within sectional platform
- Springless operation eliminating the need for a counterbalance
- Performance and functionality with minimum maintenance requirements and limited downtime
- 30x standard sectional door with 300,000 cycle life
- Universal components for ease of maintenance
- Floor-level controller for simple access
- Direct drive integrated gear/motor/brake assembly; built-in braking mechanism provides additional peace-of-mind against uncontrolled curtain travel.
- Available for wind load applications using existing Model 521 FBC or TDI approvals. Approvals limited to max height 18'1" and max width 20'2"



INDUSTRY LEADING  
COMMERCIAL & INDUSTRIAL SOLUTIONS

# MODEL 521S EVERSERVE® SPRINGLESS ALUMINUM FULL VIEW

## Standard features at a glance

Maximum standard height	18'1" (5512 mm)
Maximum standard width	20'2" (6147 mm)
Material	Extruded 6061-T6 aluminum
Standard finish	204R-1 clear anodized (painted white at no charge)
Bottom rail width	3 3/4" (95 mm) or 4 1/2" (114 mm)
Track	3"(76.2 mm) angle in or angle out, standard lift 15" radius
Mounting	Side mount, left or right, vertical only
Safety devices	Wireless sensing edge; built-in braking mechanism
Operation	Direct drive integrated gear/motor/brake assembly; Drive assembly and limit sensors are factory pre-assembled; Manual hand chain for power outage; Horsepower appropriate to door size/weight; 230V AC 3-phase motor (operating range 208-245V)
Actuator	Single open/close/stop push button station incorporated into control panel
Rollers	Nylon (standard), steel (wind load)
Warranty	24 Month, 300k Limited

## Standard accessories

Cable tension switches LH/RH;  
Hand chain switch on motor;  
Encoder plug and play;  
8-port junction box

## Finish and glass options

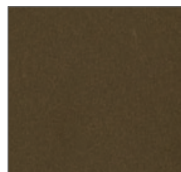
### Anodized finishes



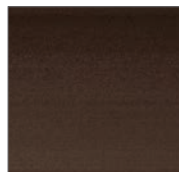
Clear (standard)



Light Bronze



Medium Bronze

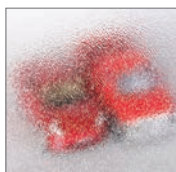


Dark Bronze

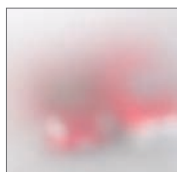
### Glass options



Double Strength DSB\* (Standard)



Obscure



Satin Etched



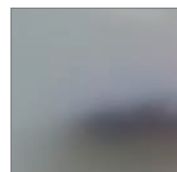
Gray Tint



Green Tint



Bronze Tint



Impact Frosted Polycarbonate

Actual finish and glass may vary from brochure photos due to fluctuations in the printing process. Always request a color sample from your Overhead Door™ Distributor for accurate color matching.

\* Insulated options available.

## Options

**Glazing options†:** 1/8" (3 mm) DSB; 1/8" (3 mm) or 1/4" (6 mm) acrylic; 1/8" (3 mm) or 1/4" (6 mm) tempered; 1/8" (3 mm) or 1/4" (6 mm) clear polycarbonate; 1/4" (6mm) and 3/8" twin-wall polycarbonate, 5/8" triple-wall polycarbonate; 1/4" (6 mm) 3/8" (10 mm) and 5/8" (16 mm) twin-wall polycarbonate, triple-wall polycarbonate 1/4" (6 mm) wire glass; 1/2" (12 mm) insulated glass

### Operation options:

208 volts, single phase, 60 Hz (190-207V range)  
208 volts, three phase, 60 Hz (190-207V range)  
230 volts, single phase, 60 Hz (208-245V range)  
230 volts, three phase, 60 Hz (208-245V range)  
460 volts, three phase, 60 Hz (456-495V range)  
575 volts, three phase, 60 Hz (517-632V range)

**Lock:** Interior galvanized single unit with interlock

**Bronze anodization**

**Powder coat finish**

†Contact your local Overhead Door™ Distributor for special glazing requirements. Verify 1/4" (6 mm) glass applications with factory.

## Optional accessories

Receivers/transmitter's/Radio control;  
Loop detectors/motion detectors;  
Additional push button station/Treadle switch/Horn/Strobe;  
Key switch/Traffic light/Warning light/LED system break;  
Cover/Gearbox heater/Transformer 9KVA;  
Coil-cord kit/Hand chain extension/Hoist switch extension;  
Photo-eye

### Powder coat finishes

Select from approximately 200 RAL powder coat color options to best match your home.



INDUSTRY LEADING  
COMMERCIAL & INDUSTRIAL SOLUTIONS

2501 S. State Hwy. 121 Bus., Suite 200, Lewisville, TX 75067

1-800-929-DOOR • sales@overheaddoor.com

overheaddoor.com

